

Part Manual

EL 8 - S

EL 6 - S

Serial Number

18036XXX-PRESENT

Rev. No: 00

ELS LIFT

CE

**OUTPOWER
THE GRAVITY.**

TABLE OF CONTENTS

GENERAL INFORMATION	3
INTRODUCTION	3
DESCRIPTION	3
HOW TO ORDER PARTS	4
PARTS ORDER FORM	4
LEGEND	6
EL 6-S LOCATION OF SAFETY INDICATORS	7
EL 8-S LOCATION OF SAFETY INDICATORS	8
List of Symbols and Hazard Legends	9
Description of Symbols and Hazard Legends	10
CHASSIS	13
Chassis Assembly	13
Steer Linkage and Drive Wheel Assembly	17
Pot Hole Protection Assembly	19
Battery Pack Module	21
Hydraulic Pack Module	23
Hydraulic Pack	23
Electronic Control Unit	25
Hydraulic Manifold	27
Scissors Assembly Installation	29
PLATFORM	31
Platform Assembly	31
Main Platform Assembly	33
Platform Extention Assembly	35
Joystick Assembly	37
SCISSOR	39
EL 6-S SCISSOR GROUP	39
Scissor Assembly	39
Scisor Group 1 Assembly	42
Scisor Group 2 Assembly	44
Scisor Group 3 Assembly	46
EL 8-S SCISSOR GROUP	48
Scissor Assembly	48
Scisor Group 1 Assembly	51

Scisor Group 2 Assembly 53

Scisor Group 3 Assembly 55

Scisor Group 4 Assembly 57

Cylinder Manifold 59

ELECTRICAL WIRING DIAGRAM 61

 EL 8-S EL 6-S Electrical Wiring Diagram 62

POWER CABLE DIAGRAM 65

 EL 8-S EL 6-S Power Cable Diagram 66

HYDRAULIC CIRCUIT DIAGRAM 68

 EL 8-S EL 6-S Hydraulic Circuit Diagram 69

GENERAL INFORMATION

INTRODUCTION

This manual introduces the detailed information about machine spare parts. Every person who maintains, inspects, tests or repairs the machine must be qualified and authorized to do.

You should contact ELS Lift when you come across a situation other than described in this part manual.

Contact Us: info@elslift.com

aftersales@elslift.com

DESCRIPTION

Machine Designation: Machines are identified by the manufacture, according to some technical specifications of the machine.

Description of Part Table: Every figure has a table which is described of part's quantity, item, number, description.

Part Manual Layout: Manual is designed under section titles of machine. Chassis, platform, scissors are examples of some titles of machine.

Non-Servised Parts: In some cases, it is necessary to Show the parts and assemblies that do not require non-servised parts. These parts in the part table are indicated as "no longer used" or "not sold seperately".

! USE THE ORIGINAL ELS SPARE PARTS FOR YOUR SAFETY !

HOW TO ORDER PARTS

When ordering replacement parts, please have the following machine information.

- ✓ Machine model number
- ✓ Machine serial number
- ✓ ELS part number
- ✓ Description of part
- ✓ Quantity of part
- ✓ Purchase order number
- ✓ Vat number
- ✓ Address for order to ship
- ✓ Desired method of shipment

Use the Part Order Form on the next page and mail or call your order to our After Sales Department.

PARTS ORDER FORM

Machine Model Number	
Machine Serial Number	
ELS Part Number	
Description of Part	
Quantity of Part	
Purchase Order Number	
Vat Number	
Address for Order to Ship	
Desired Method of Shipment	

Turkey

Els Lift Makine Sanayi Ticaret A.Ş

Organize Sanayi Bölgesi Lacivert Cadde No:11

16140 Nilüfer/Bursa / TÜRKİYE

info@elslift.com

aftersales@elslift.com

Tel: [+90 542 464 82 50](tel:+905424648250)

France

Metaloc

11-17 Rue Constantin Pecqueur

95150 Taverny, FRANCE

www.metaloc.fr

contact@metaloc.fr

Tel: [01 30 40 20 99](tel:0130402099)

Germany

Kunze GmbH

Hermann-Oberth-Straße 3

D - 83052 Bruckmühl

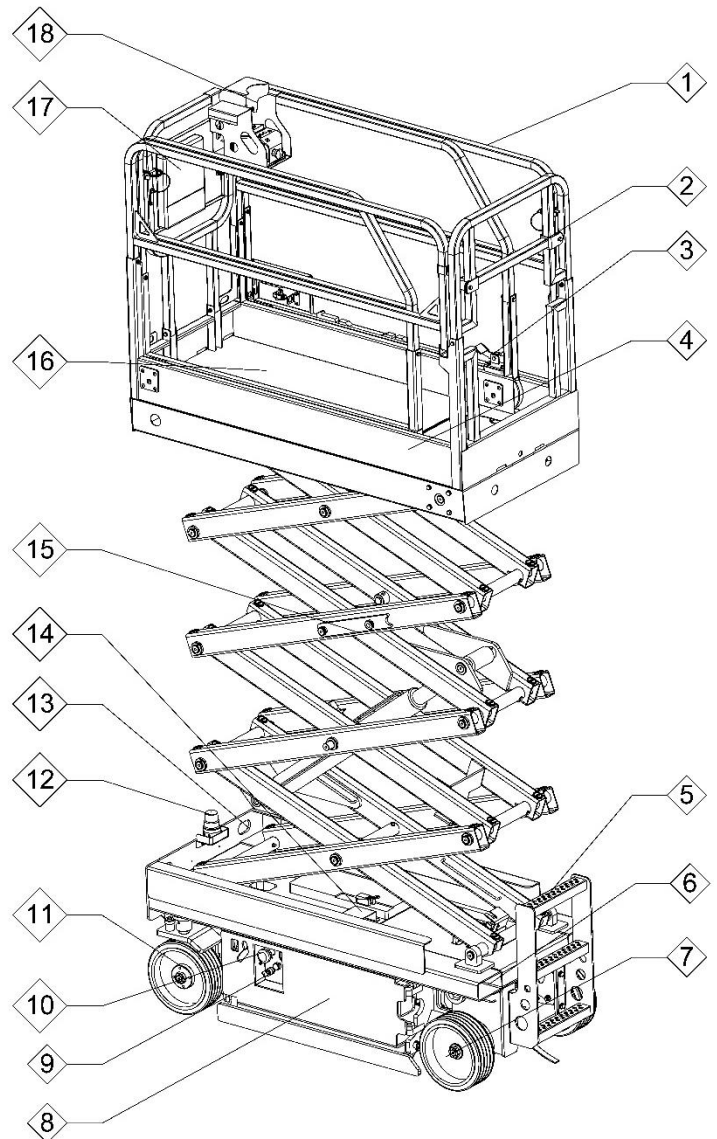
www.kunze-buehnen.com

info@kunze-buehnen.com

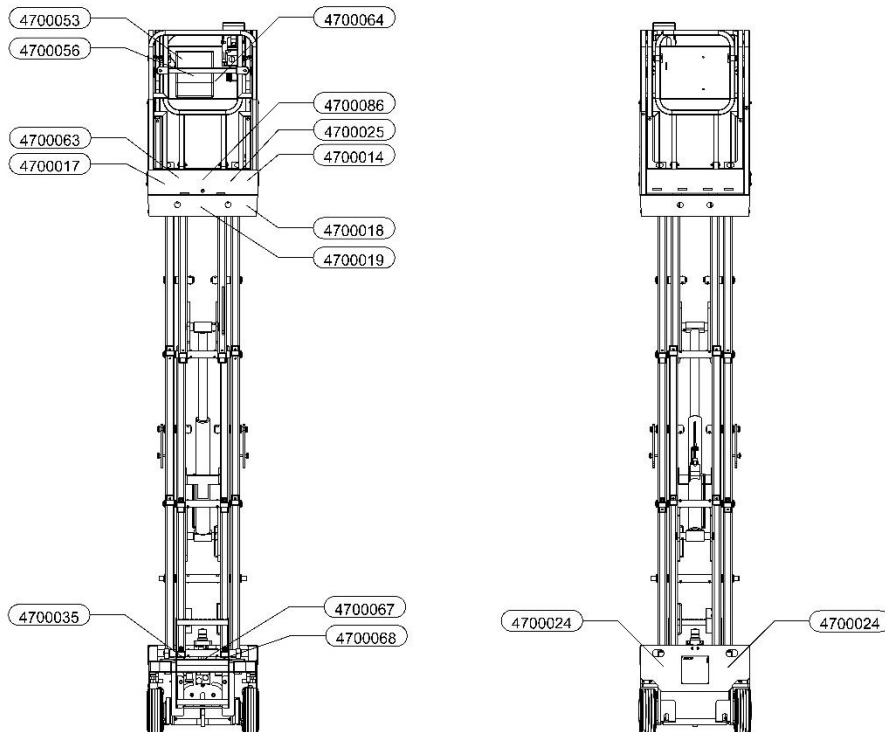
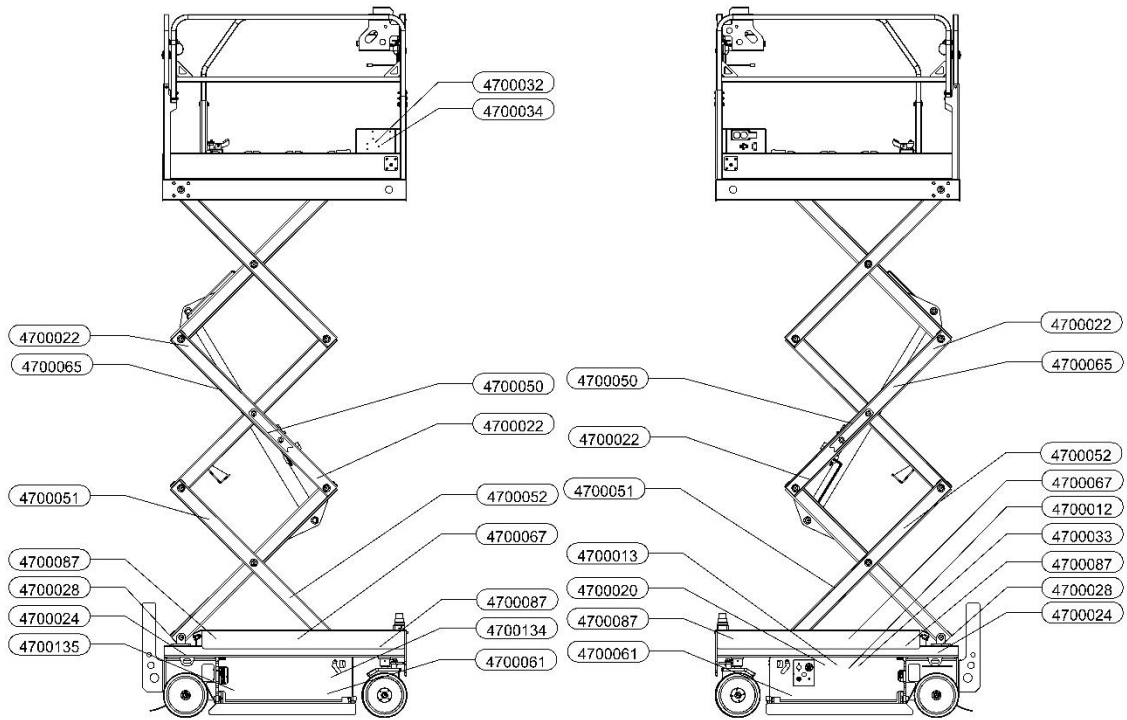
Tel: [+49 \(0\)8062/72611-0](tel:+4908062726110)

LEGEND

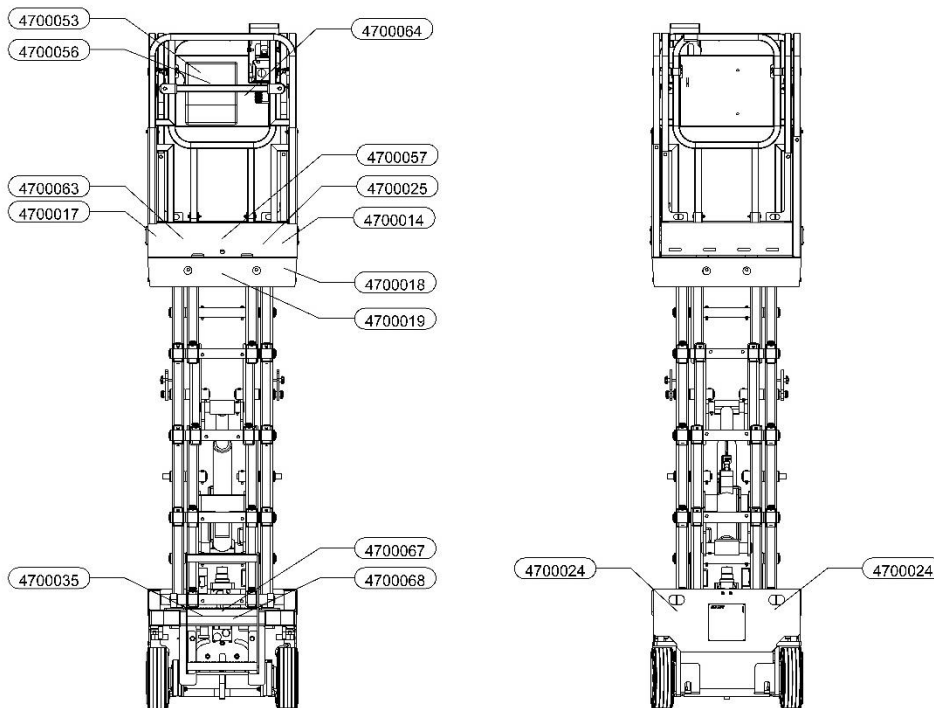
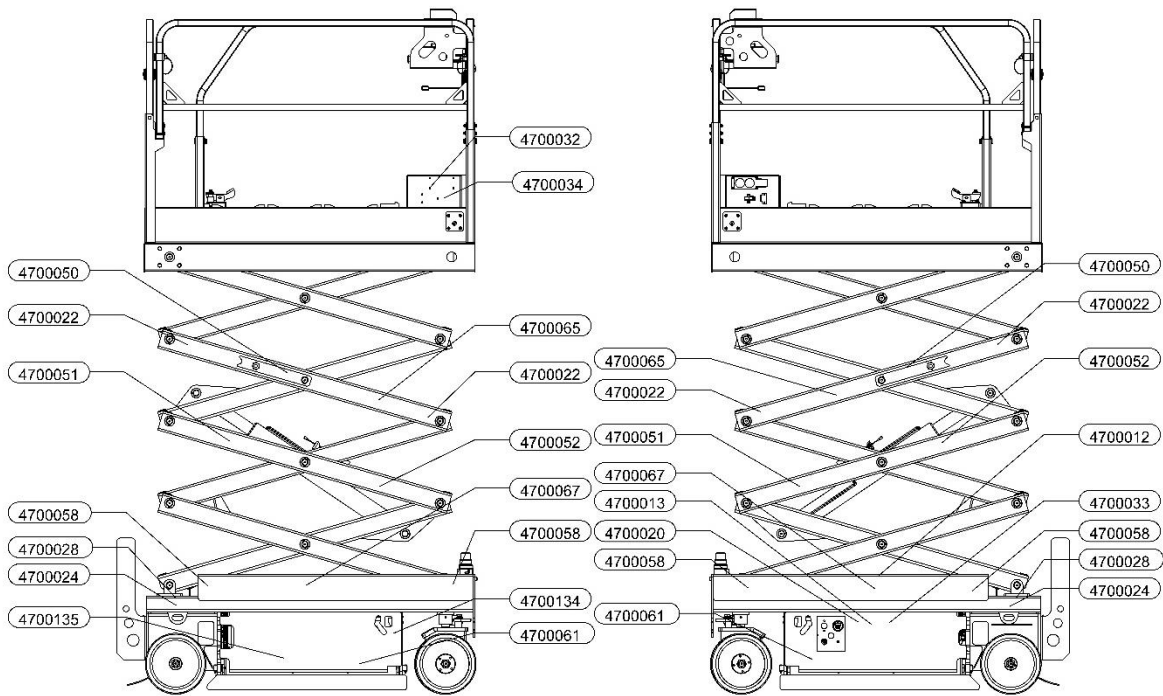
- 1. Platform Guide Rails
- 2. Platform Entry Gate
- 3. Platform Extension Lock
- 4. Platform
- 5. Platform Access Ladder
- 6. Forklift Pocket
- 7. Castor Wheels
- 8. Batteries
- 9. Ground Control Panel
- 10. Platform Emergency Stop Button
- 11. Steer Tires
- 12. Flashlight
- 13. Transport and Securing Bolt
- 14. Tilt Sensor
- 15. Maintenance Rod
- 16. Platform Extension
- 17. Guide Storage Container
- 18. Platform Control Panel



EL 6-S LOCATION OF SAFETY INDICATORS



EL 8-S LOCATION OF SAFETY INDICATORS



List of Symbols and Hazard Legends

- 4700022 → Hand Crush Hazard
- 4700056 → Guide Inspection
- 4700018 → Place of Manufacture
- 4700064 → No Smoking
- 4700053 → Read the Operating Manual
- 4700035 → Brake Release Safety
- 4700033 → Battery Charge Plug
- 4700061 → Crush Hazard
- 4700065 → Warnings For Use
- 4700068 → Emergency Lowering Cable
- 4700012 → Do Not Use the Machine When Charging
- 4700013 → Battery Charging Interval
- 4700020 → Use Safety Gloves and Goggles
- 4700063 → Fall Hazard
- 4700014 → Misuse
- 4700025 → Platform Entry Gate Warning
- 4700019 → Electric Shock Hazard
- 4700024 → Attachment and Lifting Point
- 4700032 → Platform Power Supply Data
- 4700050 → Maintenance Rod
- 4700058 → EL 8-S Wheel Load
- 4700087 → EL 6-S Wheel Load
- 4700023 → Forklift Pockets
- 4700066 → Forklift Lift Warning
- 4700057 → EL 8-S Instructions for Inside Use
- 4700086 → EL 6-S Instructions for Inside Use
- 4700017 → Recommendations for Use
- 4700134 → Please Keep Locked
- 4700135 → Please wait till to batteries are fully charged. Check battery fluid and fill to batteries after charging batteries.

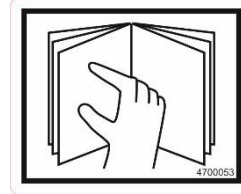
Description of Symbols and Hazard Legends



4700018



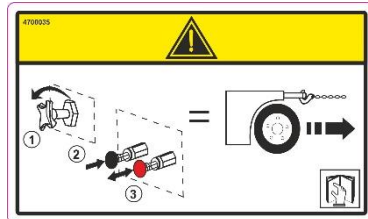
4700064



4700053



4700022



4700035



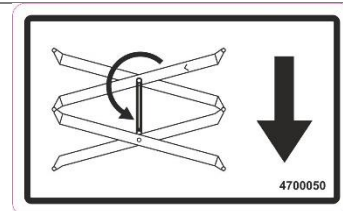
4700033



4700051



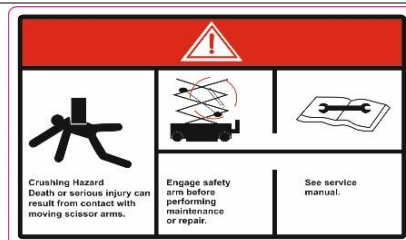
4700052



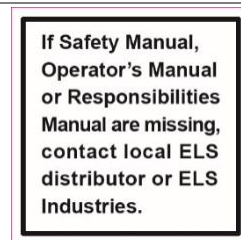
4700050



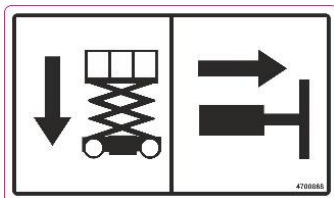
4700061



4700065



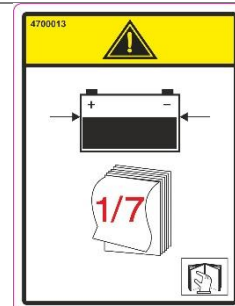
4700056



4700068



4700012



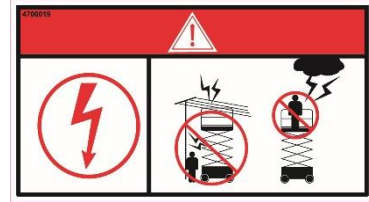
4700013



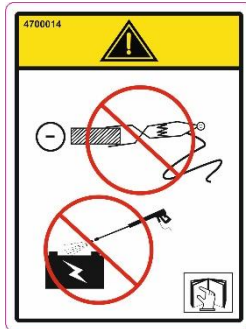
4700020



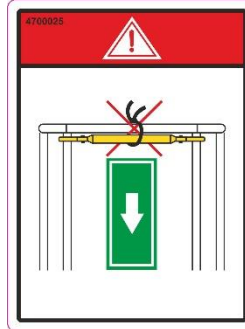
4700063



4700019



4700014



4700025



4700024



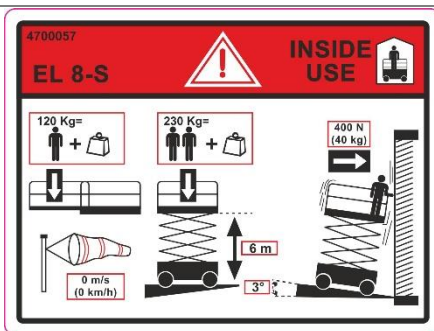
4700032



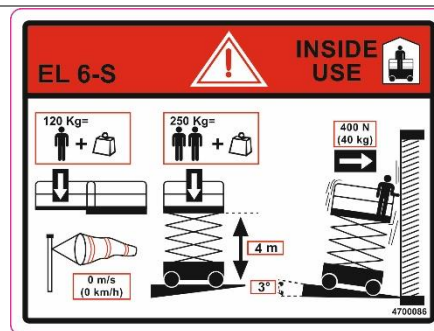
4700067



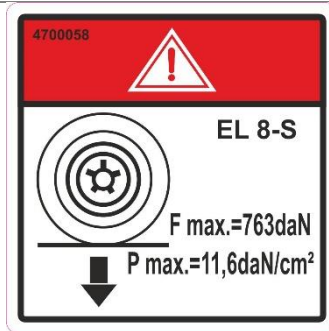
4700023



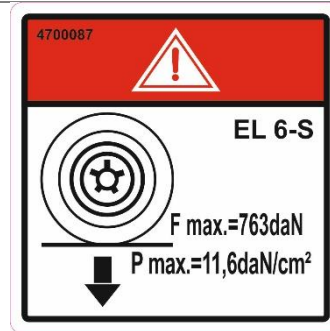
4700057




4700086



4700058



4700087



RECOMMENDATIONS FOR USE

BEFORE USING THIS MACHINE THE OPERATOR MUST

- 1- Read and understand the information in the operators manual and the information marked on the machine, and become familiar with the controls.
- 2- Receive training and practical experience in operating the machine, under the employers supervision.
- 3- Ensure that maintenance is performed according to the manufacturers instructions.
- 4- Refrain from using the machine in the event of any malfunction.
- 5- Not wash the electrical components with a washer pressure.
- 6- Not remove any parts which might affect the stability.
- 7- Not modify the machine without the manufacturers approval.
- 8- Not use the machine as a welding earth.
- 9- Not weld on the machine without first disconnecting the battery terminals. See the instructions in the maintenance manual.

DAILY INSPECTION

- 1- Check the level of hydraulic oil and battery electrolyte.
- 2- Check that there are no apparent defects hydraulic leaks, loose bolts, loose electric connections.
- 3- Check that the tilt indicator operates correctly by sounding the buzzer.

INSTRUCTIONS BEFORE USE

IMPORTANT when using the AC power line to the work platform, the power plug must be connected to an electrical installation protected by a 30mA circuit breaker (C15100 standart)

START - UP

- 1- Unlock the emergency stop button then press the starter button.
- 2- If the machine does not start, wait 10 second then repeat the operation.

THE MACHINE MUST NO BE USED
WHILE CHARGING THE BATTERIES

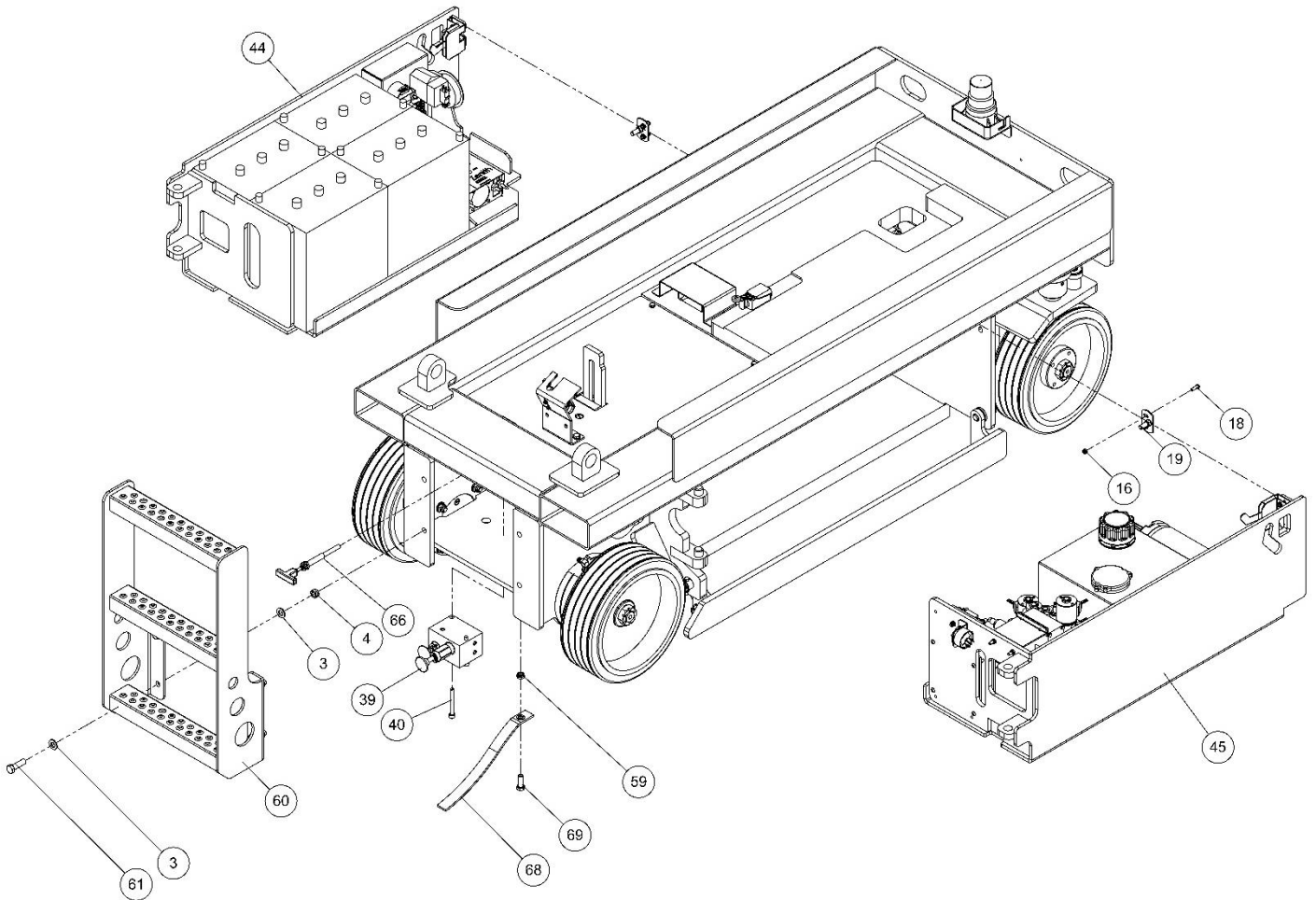
ELS LIFT

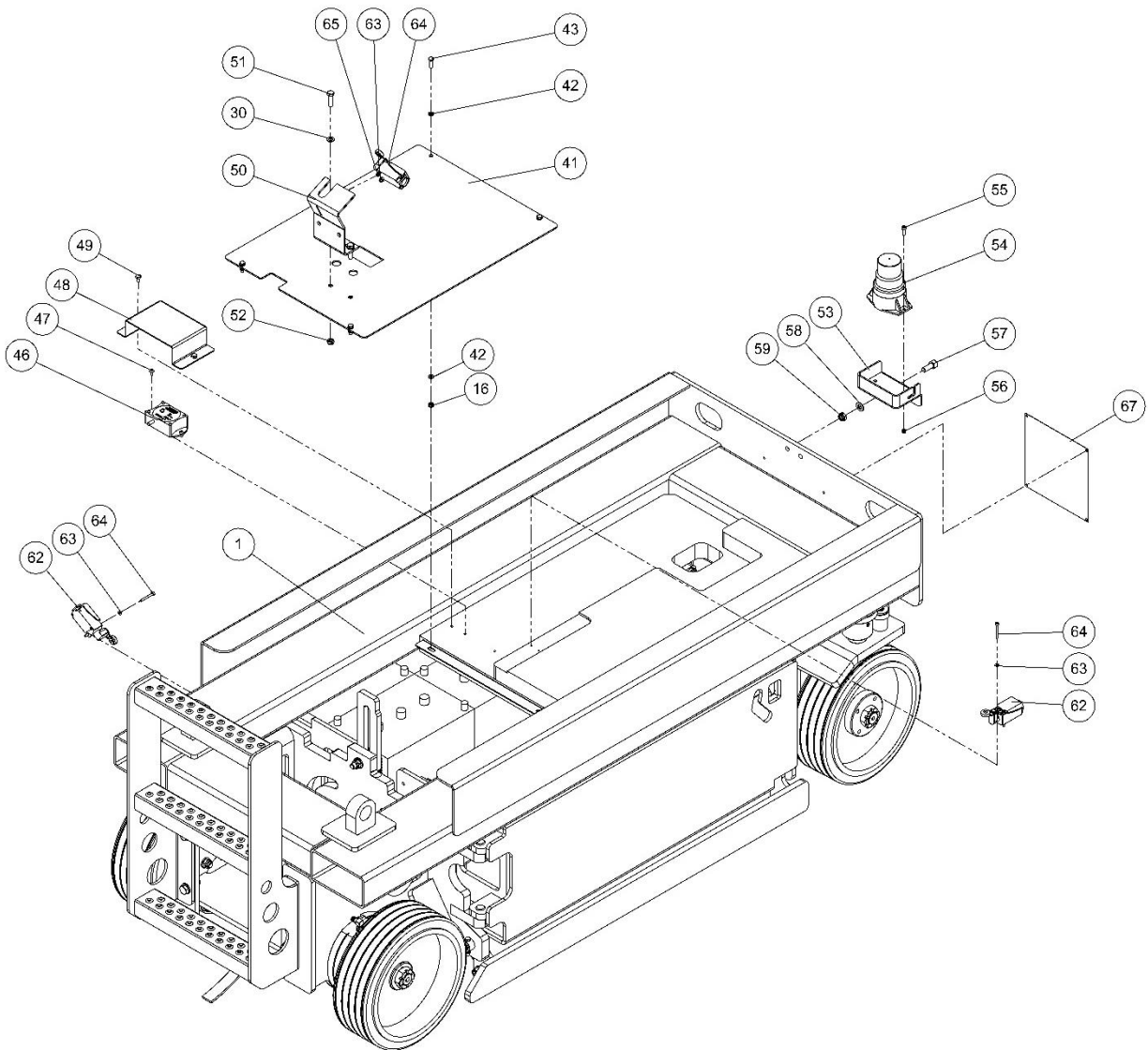
4700017-EN

4700017

CHASSIS

Chassis Assembly

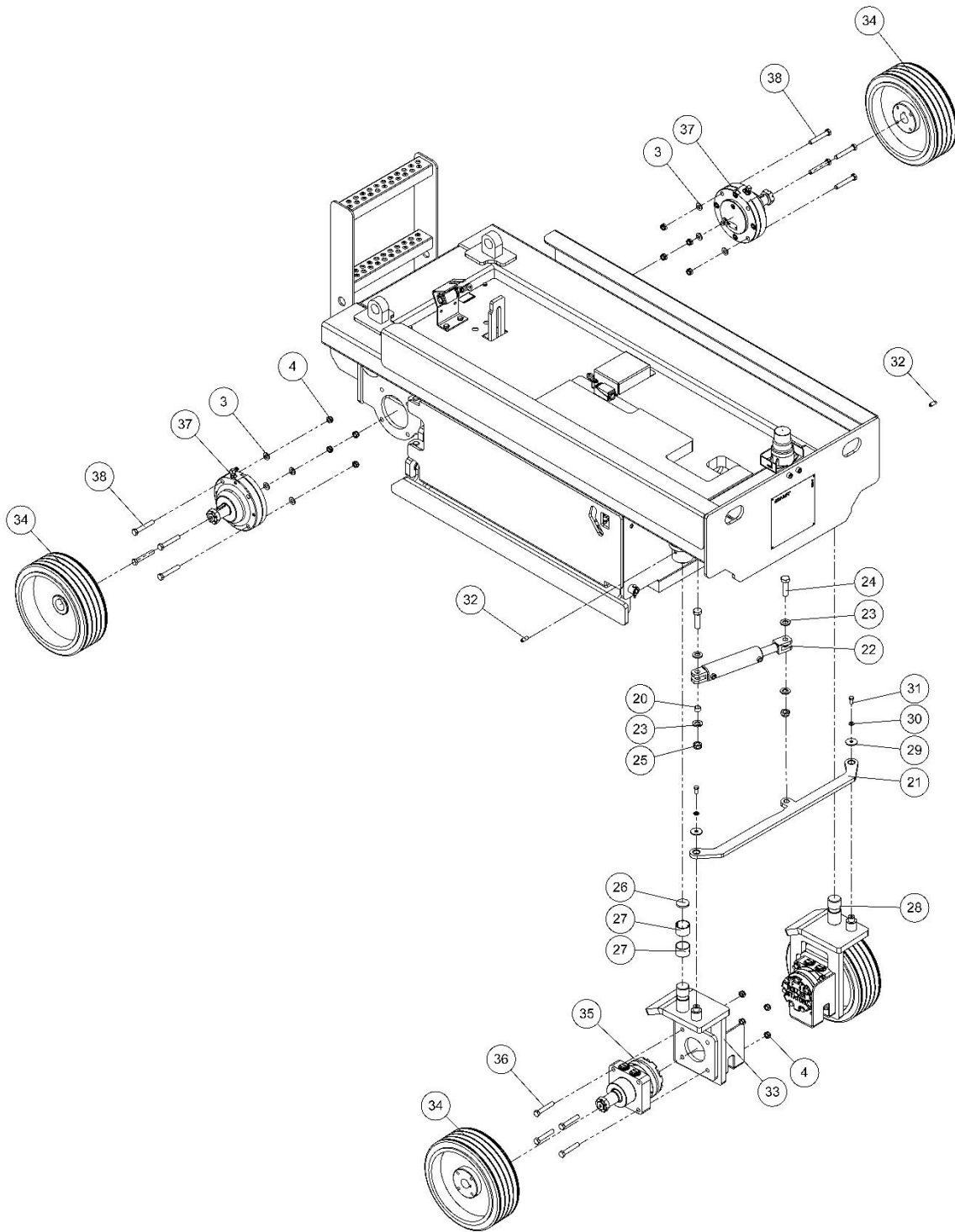




Item	Qty.	Description	Part No.
1	1	Chassis weldment assembly	10610100AA
3	28	M12 Washer DIN 125	S01012000AA
4	28	M12 Prevailing torque nut ISO 10511	S07012000AA
16	12	M6 Prevailing torque nut ISO 10511	S07006000AA
18	4	M6x20 Hexagon socket button head screw ISO 7380	S26006008AA
19	2	Latch	M01000003AA
30	6	M8 Washer DIN 125	S01008000AA
39	1	Park release main block	H00600005AA
40	2	M8x70 Socket head cap screw DIN 912	S21008018AA
41	1	Cover	10611800AA
42	8	M6 Washer DIN 125	S01006000AA
43	4	M6x20 Hex head cap screw DIN 518	S20006008AA
44	1	Battery pack module assembly	10611900AA
45	1	Hydraulic pack module assembly	10612100AA
46	1	Tilt sensor	E04302001AA
47	2	M5x10 Hexagon socket button head screw ISO 7380	S26005003AA
48	1	Tilt sensor protection plate	19991004AA
49	2	M6x10 Hex head cap screw DIN 518	S20006003AA
50	1	Limit switch protection plate	19991010AA
51	2	M8x30 Hex head cap screw DIN 518	S20008010AA
52	2	M8 Prevailing torque nut ISO 10511	S07008000AA
53	1	Flasher linkage plate	19900100AA
54	1	Flasher	E00520001AA
55	2	M5x16 Socket head cap screw DIN 912	S21005006AA

56	2	M5 Prevailing torque nut ISO 10511	S07005000AA
57	2	M10x25 Socket head cap screw DIN 912	S21010009AA
58	2	M10 Washer DIN 125	S01010000AA
59	3	M10 Prevailing torque nut ISO 10511	S07010000AA
60	1	Ladder weldment assembly	10612500AA
61	4	M12x40 Hex head cap screw DIN 518	S20012012AA
62	3	Limit switch	E00820003AA
63	8	M4 Washer DIN 125	S01004000AA
64	6	M4x35 Socket head cap screw DIN 912	S21004011AA
65	2	M4 Prevailing torque nut ISO 10511	S07004000AA
66	1	Emergency lowering cable	M00600100AA
67	1	EL 6-S Product label	M03100005AA
		EL 8-S Product label	M03100007AA
68	1	Static strap	M01510100AA
69	1	M10x30 Hex head cap screw DIN 518	S20010010AA

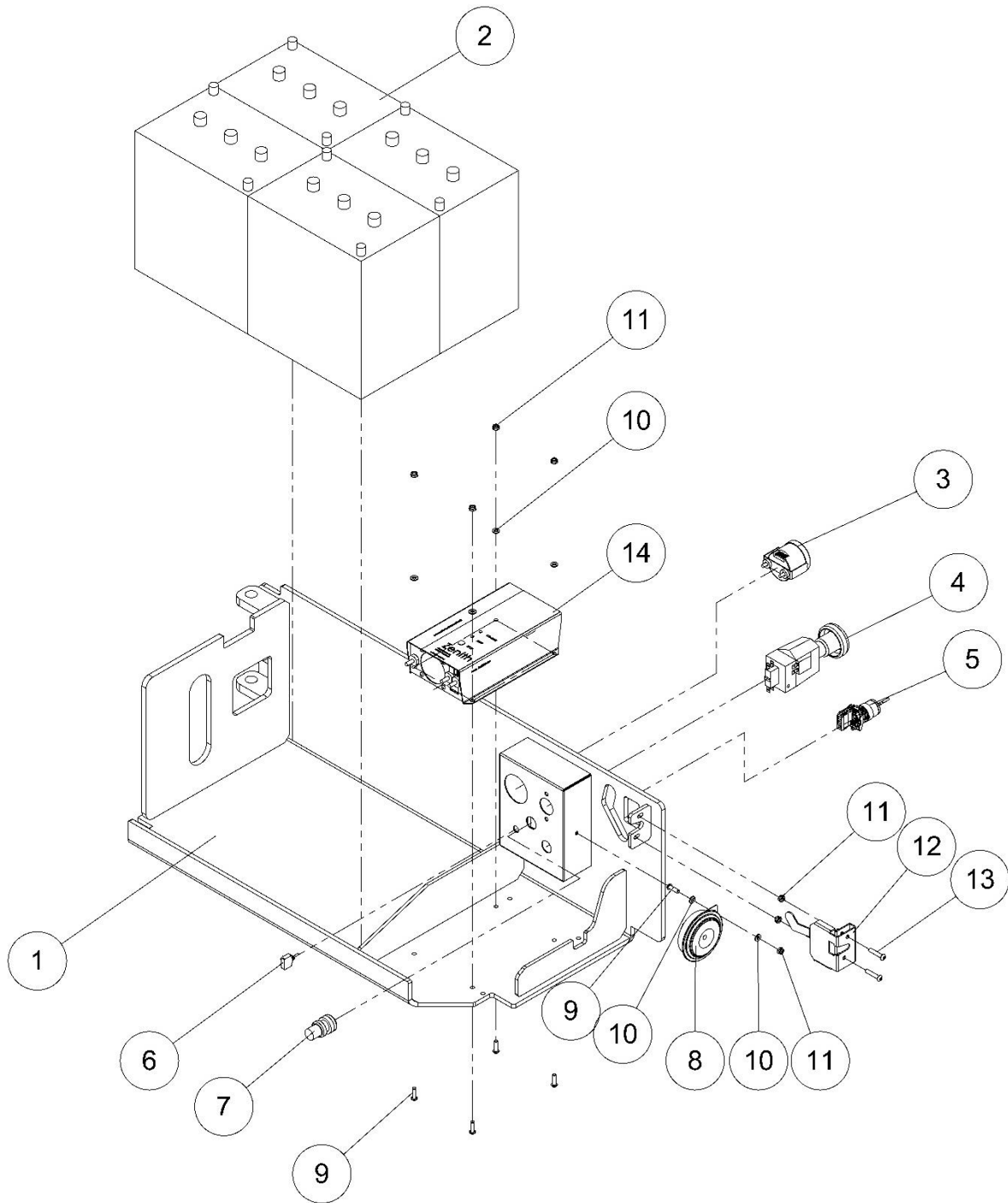
Steer Linkage and Drive Wheel Assembly



Item	Qty.	Description	Part No.
3	28	M12 Washer DIN 125	S01012000AA
4	28	M12 Prevailing torque nut ISO 10511	S07012000AA
20	1	Ø16x12 P10 Bushing	S31039004AA
21	1	Steer linkage plate	10611500AA
22	1	Steering cylinder	H00510004AA
23	6	M16 Washer DIN 125	S01016000AA
24	2	M16x55 Hex head cap screw DIN 518	S20016015AA
25	2	M16 Prevailing torque nut ISO 10511	S07016000AA
26	2	Wheel steering washer 1	10610006AA
27	4	Ø40x30 P20 Bushing	S31063010BA
28	1	Wheel assembly, left	10611600AA
29	2	Wheel steering washer 2	10610007AA
30	6	M8 Washer DIN 125	S01008000AA
31	2	M8x20 Hex head cap screw DIN 518	S20008008AA
32	2	M10x25 Socket set screw DIN 916	S18010009AA
33	1	Wheel assembly, right	10611700AA
34	4	Wheel	M00200004AA
35	2	Drive motor	H00200002BA
36	8	M12x70 Hex head cap screw DIN 518	S20012018AA
37	2	Hydraulic break	H00400002BA
38	8	M12x75 Hex head cap screw DIN 518	S20012019AA

Item	Qty.	Description	Part No.
1	1	Chassis weldment assembly	10610100AA
2	1	M12x40 Special screw	10610001AA
3	28	M12 Washer DIN 125	S01012000AA
4	28	M12 Prevailing torque nut ISO 10511	S07012000AA
5	1	Chassis pothole linkage weldment	10610800AA
6	1	Chassis pothole linkage weldment support block	10610002AA
7	1	M8x40 Socket head cap screw DIN 912	S21008012AA
8	2	Pothole linkage	10611000AA
9	2	M14 Washer DIN 125	S01014000AA
10	2	M12x25 Special screw	10610003AA
11	2	Pothole linkage plate	10610004AA
12	4	M12x40 Socket head cap screw DIN 912	S21012012AA
13	1	Pot hole guard weldment, right	10611100AA
14	4	Pot hole pin	10610005AA
15	4	M6x40 Hex head cap screw DIN 518	S20006012AA
16	12	M6 Prevailing torque nut ISO 10511	S07006000AA
17	1	Pot hole guard weldment, left	10611300AA

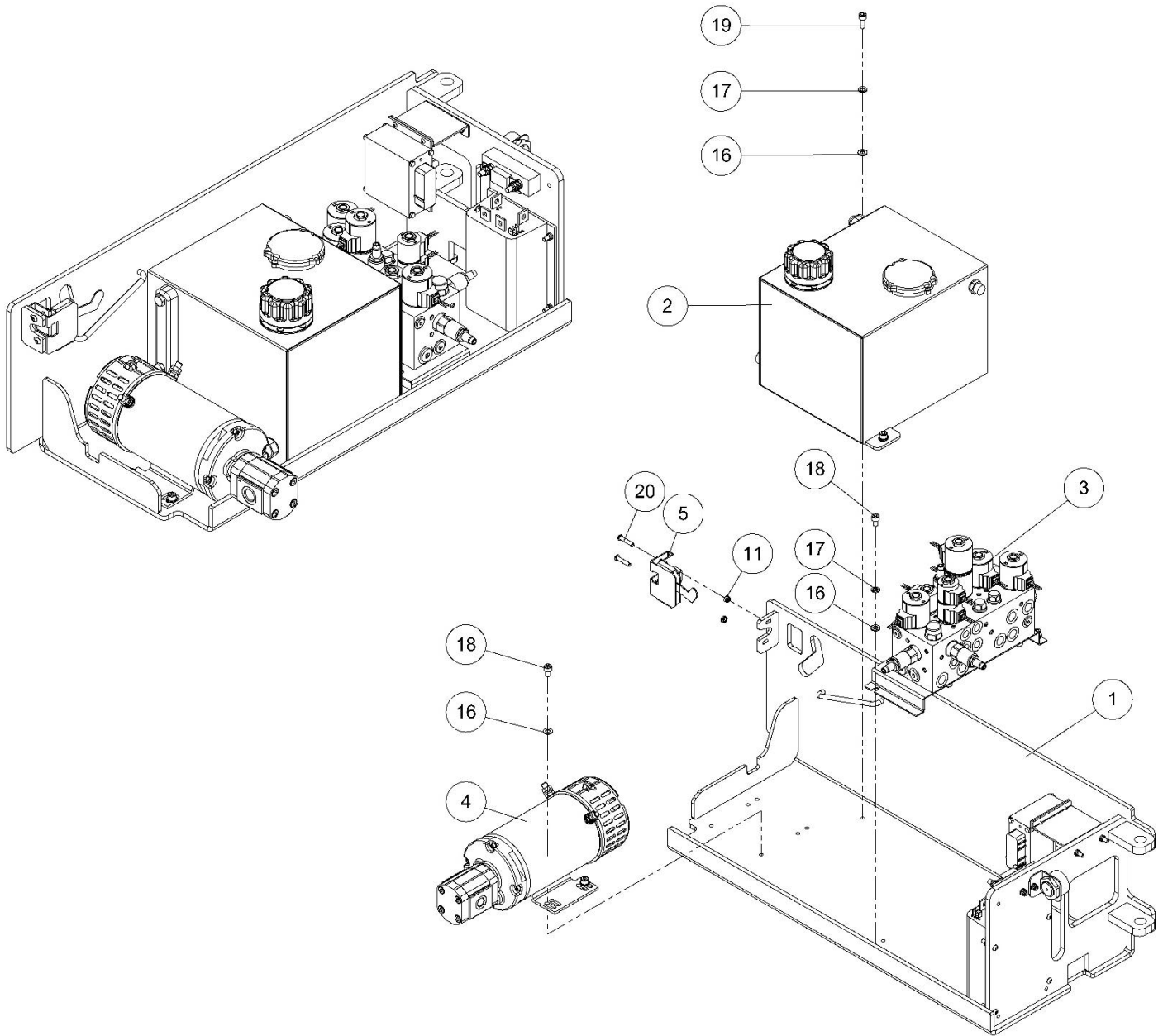
Battery Pack Module



Item	Qty.	Description	Part No.
1	1	Battery pack weldment	10612000AA
2	4	6V 225A Batteries	E00212001AA
3	1	Indicator	E04600002AA
4	1	Main Switch	E00400001AA
5	1	Key switch	E01800001AA
6	1	Toggle switch	E00622001AA
7	1	Indicator	E00900001AA
8	1	Horn	E01020001AA
9	5	M6x20 Hexagon socket button head screw ISO 7380	S26006008AA
10	6	M6 Washer DIN 125	S01006000AA
11	7	M6 Prevailing torque nut ISO 10511	S07006000AA
12	1	Lock	M01000002AA
13	2	M6x30 Hexagon socket button head screw ISO 7380	S26006010AA
14	1	24V 20A Battery charger	E00322001AA

Hydraulic Pack Module

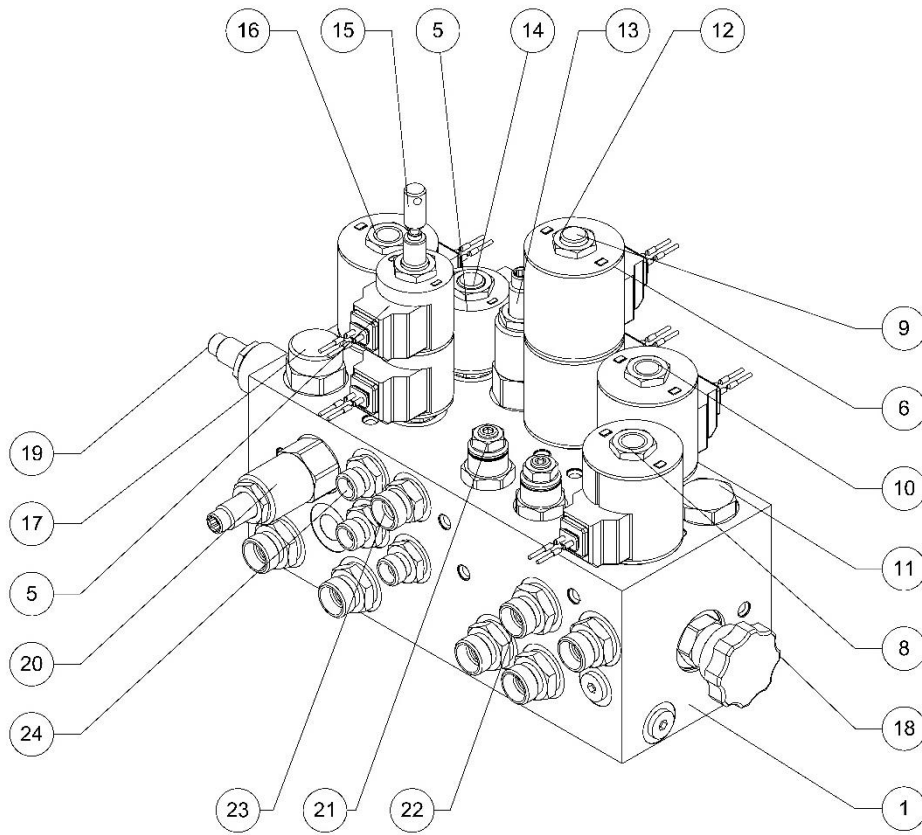
Hydraulic Pack



Item	Qty.	Description	Part No.
1	1	Hydraulic pack weldment assembly	10612200AA
2	1	Hydraulic oil tank	H01200001AA
3	1	Hydraulic manifold assembly	H00600001AA
4	1	Hydraulic power pack	H00100001AA
5	1	Lock	M01000001AA
11	10	M6 Prevailing torque nut ISO 10511	S07006000AA
16	12	M8 Washer DIN 125	S01008000AA
17	4	M8 Curved spring lock washer DIN 128	S03008000AA
18	6	M8x12 Socket head cap screw DIN 912	S21008004AA
19	2	M8x20 Socket head cap screw DIN 912	S21008008AA
20	8	M6x30 Hexagon socket button head fscrew ISO 7380	S26006010AA

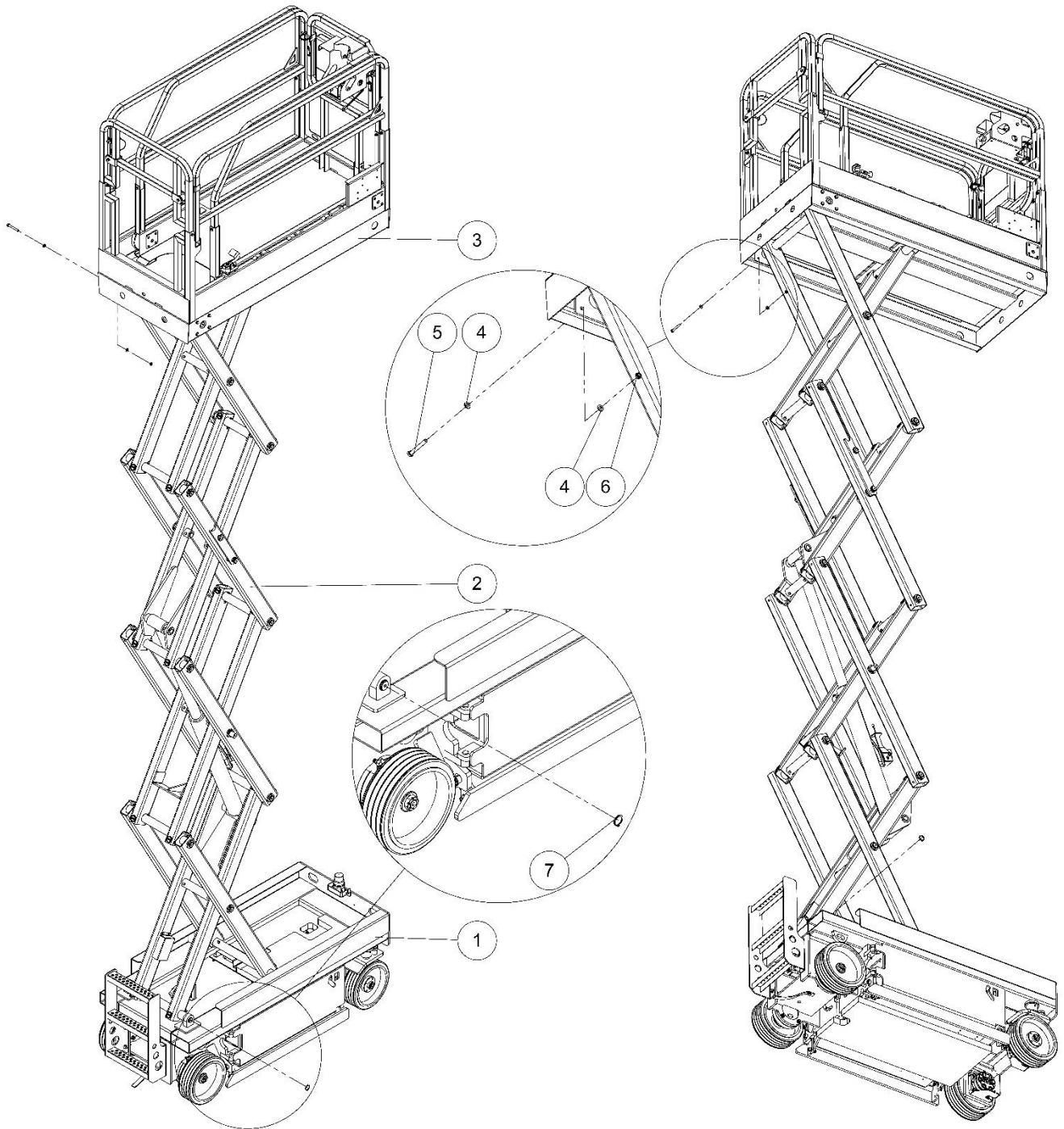
Item	Qty.	Description	Part No.
1	1	Hydraulic pack weldment assembly	10612200AA
6	1	Buzzer linkage plate	19991003AA
7	1	Fuse linkage plate	11611502AA
8	2	M8x40 Socket head cap screw DIN 912	S21008012AA
9	2	M6x35 Hexagon socket button head fscrew ISO 7380	S26006011AA
10	4	M6 Washer DIN 125	S01006000AA
11	10	M6 Prevailing torque nut ISO 10511	S07006000AA
12	1	Buzzer	E01600001AA
13	1	Electronic control unit linkage plate	11611501AA
14	1	Electronic control unit	E04110001AA
15	1	Motor controller	E04000001AA
16	12	M8 Washer DIN 125	S01008000AA
20	8	M6x30 Hexagon socket button head fscrew ISO 7380	S26006010AA
21	2	M4x12 Hexagon socket button head fscrew ISO 7380	S26004004AA
22	4	M8 Prevailing torque nut ISO 10511	S07008000AA
23	1	Fuse	E01100002AA

Hydraulic Manifold



Item	Qty.	Description	Part No.
1	1	Hydraulic block	H00700001AA
5	3	Coil 01	H00900001AA
6	5	Coil 02	H00900002AA
8	1	Solenoid valve 1	H00800001AA
10	1	Solenoid valve 2	H00800002AA
11	1	Flow divider valve 1	H00801001AA
12	1	Solenoid valve 3	H00800003AA
13	1	Reliefe valve 1	H00802001AA
14	1	Solenoid valve 4	H00800004AA
15	1	Solenoid valve 5	H00800005AA
16	1	Solenoid valve 6	H00800006AA
17	1	Flow regulator valve 1	H00803001AA
18	1	Flow control valve 1	H00804001AA
19	1	Reliefe valve 2	H00802002AA
20	1	Reliefe valve 3	H00802003AA
21	2	Countere balance 1	H00805001AA
22	6	G3/8" Ø12L Connector	H10252007AA
23	1	G1/4" Ø12L Connector	H10251007AA
24	3	G1/4" Ø8L Connector	H10251005AA

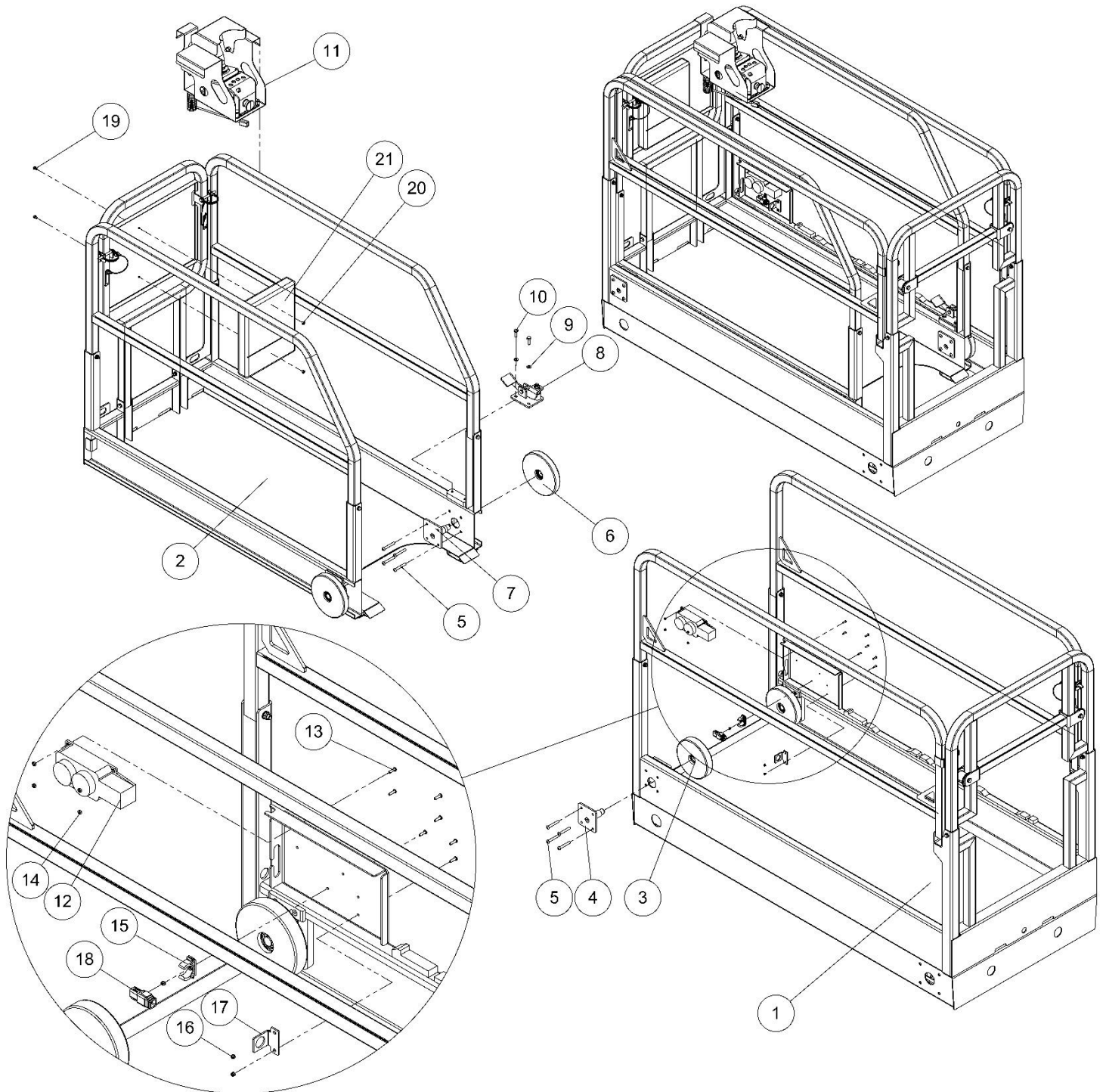
Scissors Assembly Installation



Item	Qty.	Description	Part No.
1	1	Chassis assembly	10610000AA
2	1	Scissors assembly	10620000AA
3	1	Platform assembly	10630000AA
4	16	M10 Washer DIN 125	S01010000AA
5	8	M10x80 Hex head cap screw DIN 518	S20010020AA
6	8	M10 Prevailing torque nut ISO 10511	S07010000AA
7	2	Ø30 Circlip DIN 471	S14053000AA

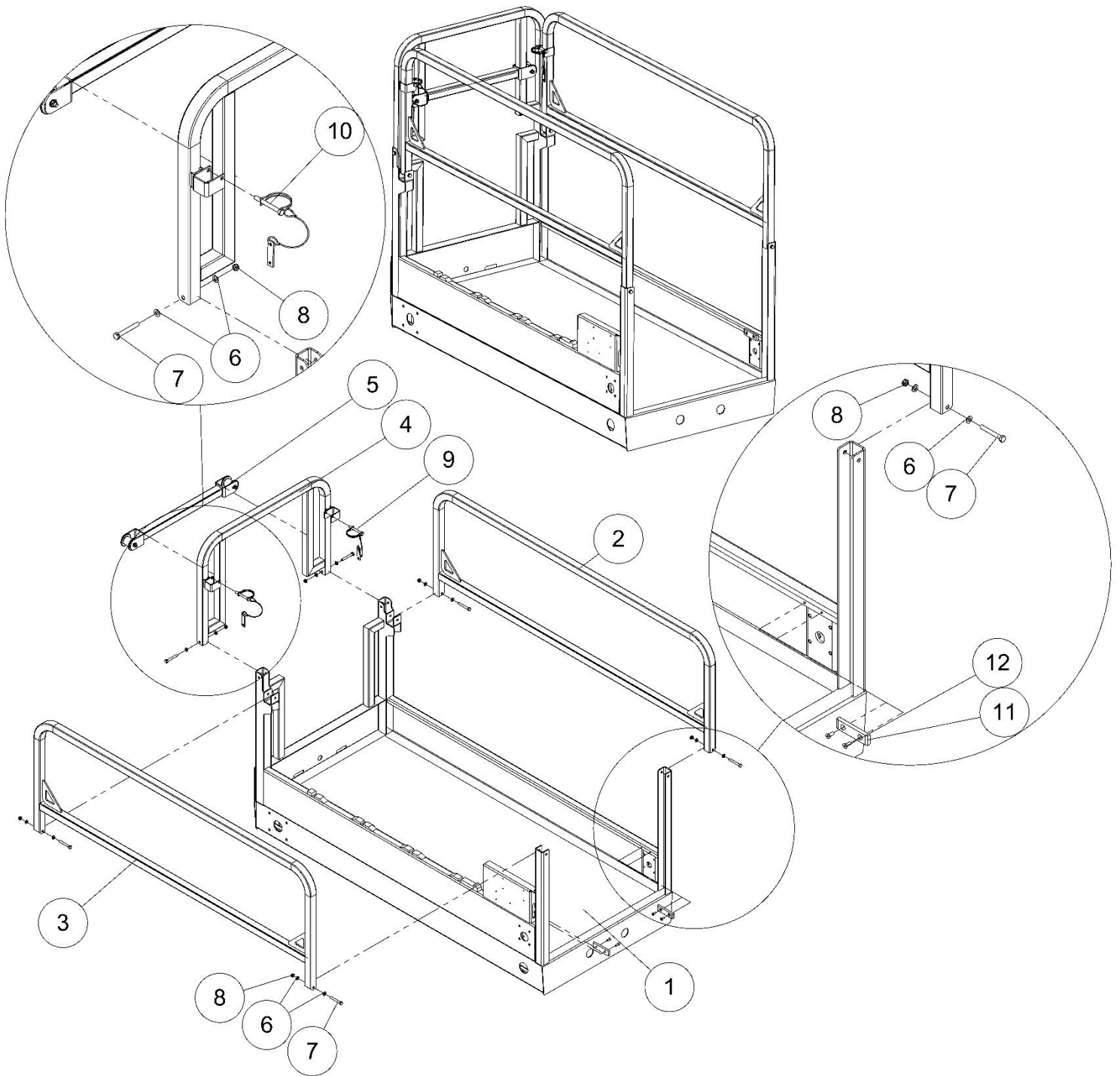
PLATFORM

Platform Assembly



Item	Qty.	Description	Part No.
1	1	Main platform assembly	10630100AA
2	1	Platform extension assembly	10631400AA
3	2	Roller, Main platform	11632000AA
4	2	Main platform roller weldment assembly	11632100AA
5	16	M8x55 Hexagon socket button head screw ISO 7380	S26008015AA
6	2	Roller, Platform extension	11632200AA
7	2	Platform extension roller weldment assembly	11632300AA
8	1	Platform extension locking assembly	19930100AA
9	2	M8 Washer DIN 125	S01008000AA
10	2	M8x25 Hex head cap screw DIN 518	S20008009AA
11	1	Joystick box assembly	19930600AA
12	1	Duplex receptacle	E02300001AA
13	7	M4x15 Hexagon socket button head screw ISO 7380	S26004005AA
14	4	M4 Hex nut DIN 934 ISO 4029	S04004000AA
15	1	Crochet	M01600001AA
16	3	M4 Prevailing torque nut ISO 10511	S07004000AA
17	1	Bracket, Cable transport	19993003AA
18	1	Deutsch socket	E00720601AA-BA
19	2	M6x10 Hex head cap screw DIN 518	S20006003AA
20	2	M6 Hex nut DIN 934 ISO 4029	S04006000AA
21	1	Manual box	M01300001AA

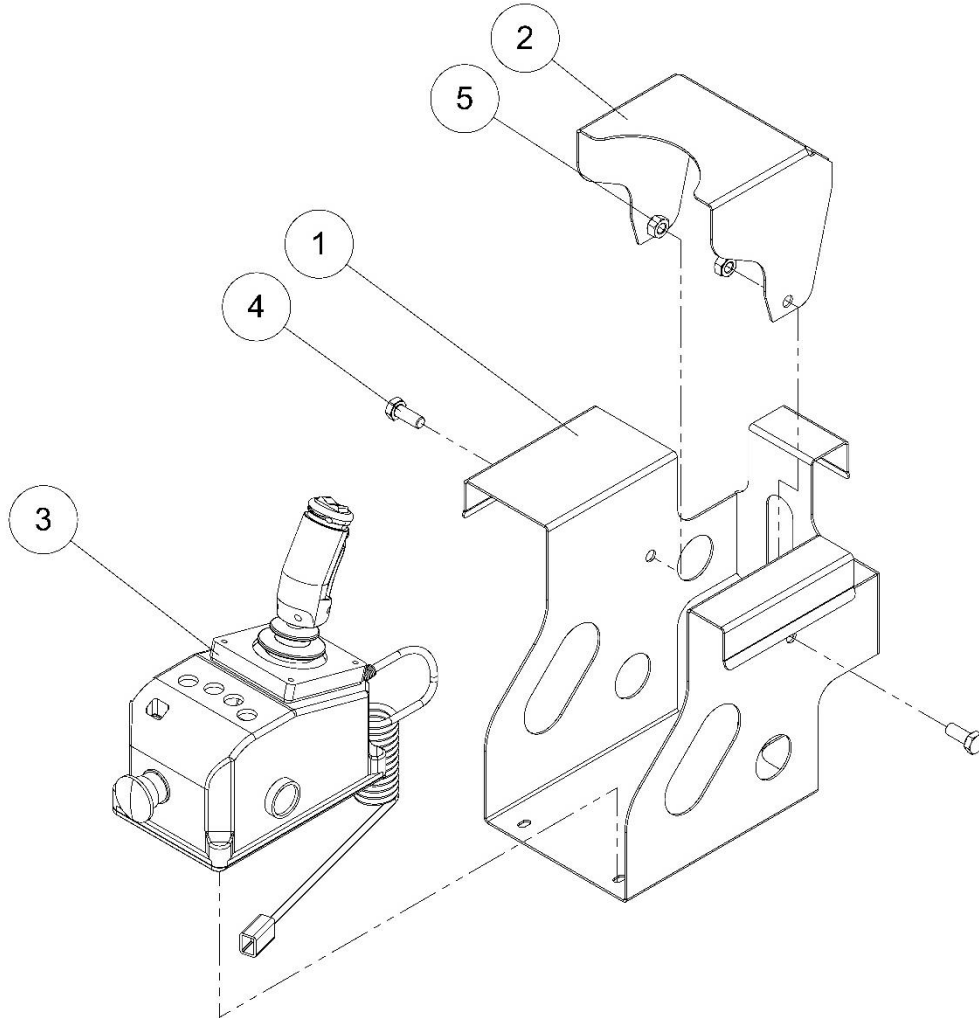
Main Platform Assembly



Item	Qty.	Description	Part No.
1	1	Main platform deck weldment assembly	10630200AA
2	1	Main platform left rail weldment assembly	10630900AA
3	1	Main platform right rail weldment assembly	10631000AA
4	1	Platform entry gate weldment assembly	10631100AA
5	1	Platform entry gate assembly	10631200AA
6	12	M8 Washer DIN 125	S01008000AA
7	6	M8x60 Hex head cap screw DIN 518	S20008016AA
8	6	M8 Prevailing torque nut ISO 10511	S07008000AA
9	1	Steel rope pin assembly 1	M01030100AA
10	1	Steel rope pin assembly 2	M01030100AA
9	2	Main platform fixing delrin	10630101AA
10	4	M6x16 Hexagon socket countersunk head cap screw DIN 7991	S24006006AA

Item	Qty.	Description	Part No.
1	1	Platform extention deck weldment assembly	10631500AA
2	1	Platform extention left rail weldment assembly	10631900AA
3	1	Platform extention right rail weldment assembly	10632000AA
4	1	Platform extention front rail weldment assembly	10632100AA
5	2	Platform extention fixing delrin	11631201AA
6	12	M8 Washer DIN 125	S01008000AA
7	6	M8x60 Hex head cap screw DIN 518	S20008016AA
8	6	M8 Prevailing torque nut ISO 10511	S07008000AA
9	4	M6x16 Hexagon socket countersunk head cap screw DIN 7991	S24006006AA
10	1	Steel rope pin assembly 1	M01030100AA
11	1	Steel rope pin assembly 2	M01030100AA

Joystick Assembly

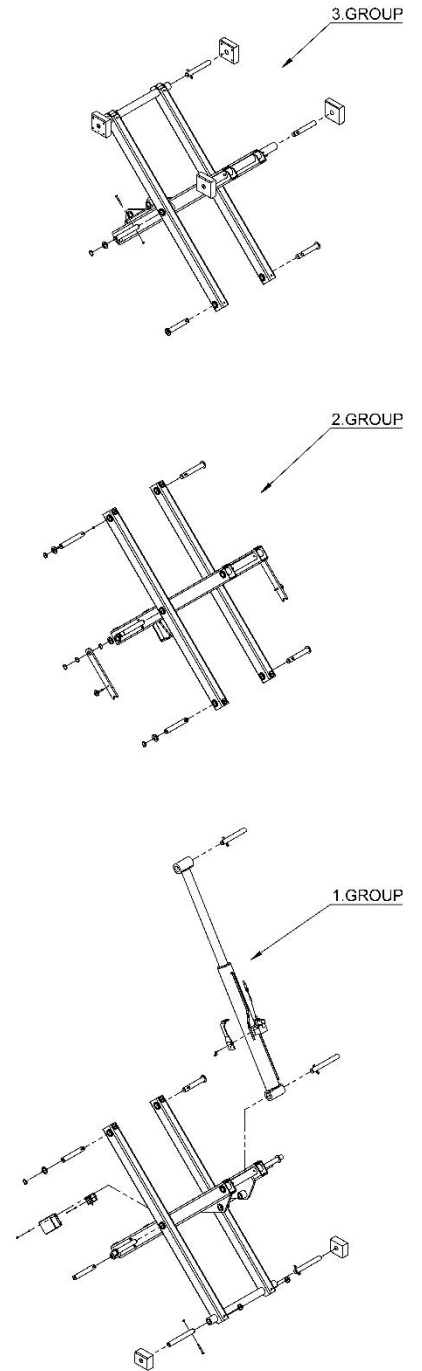
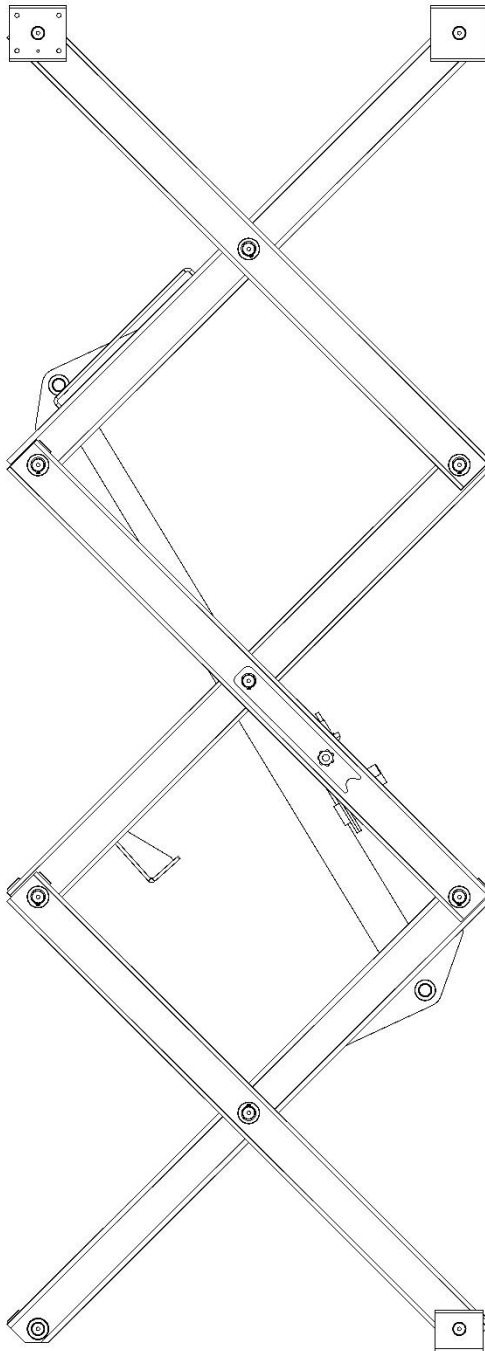
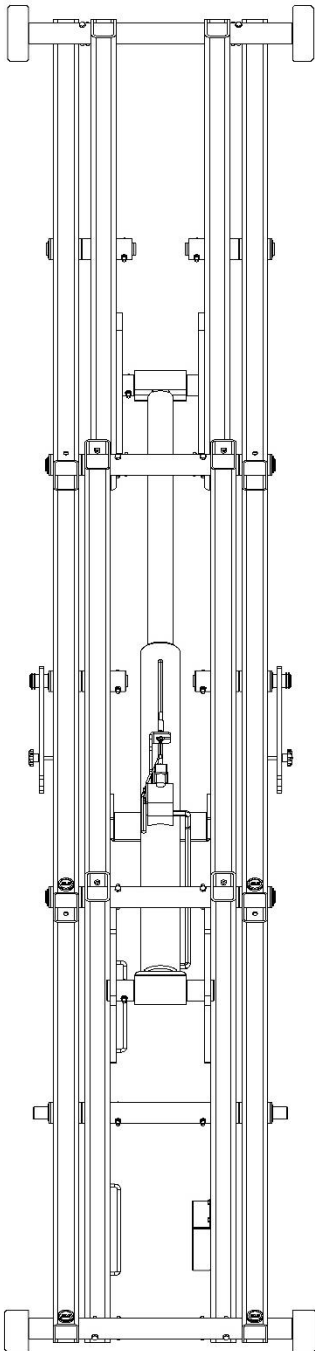


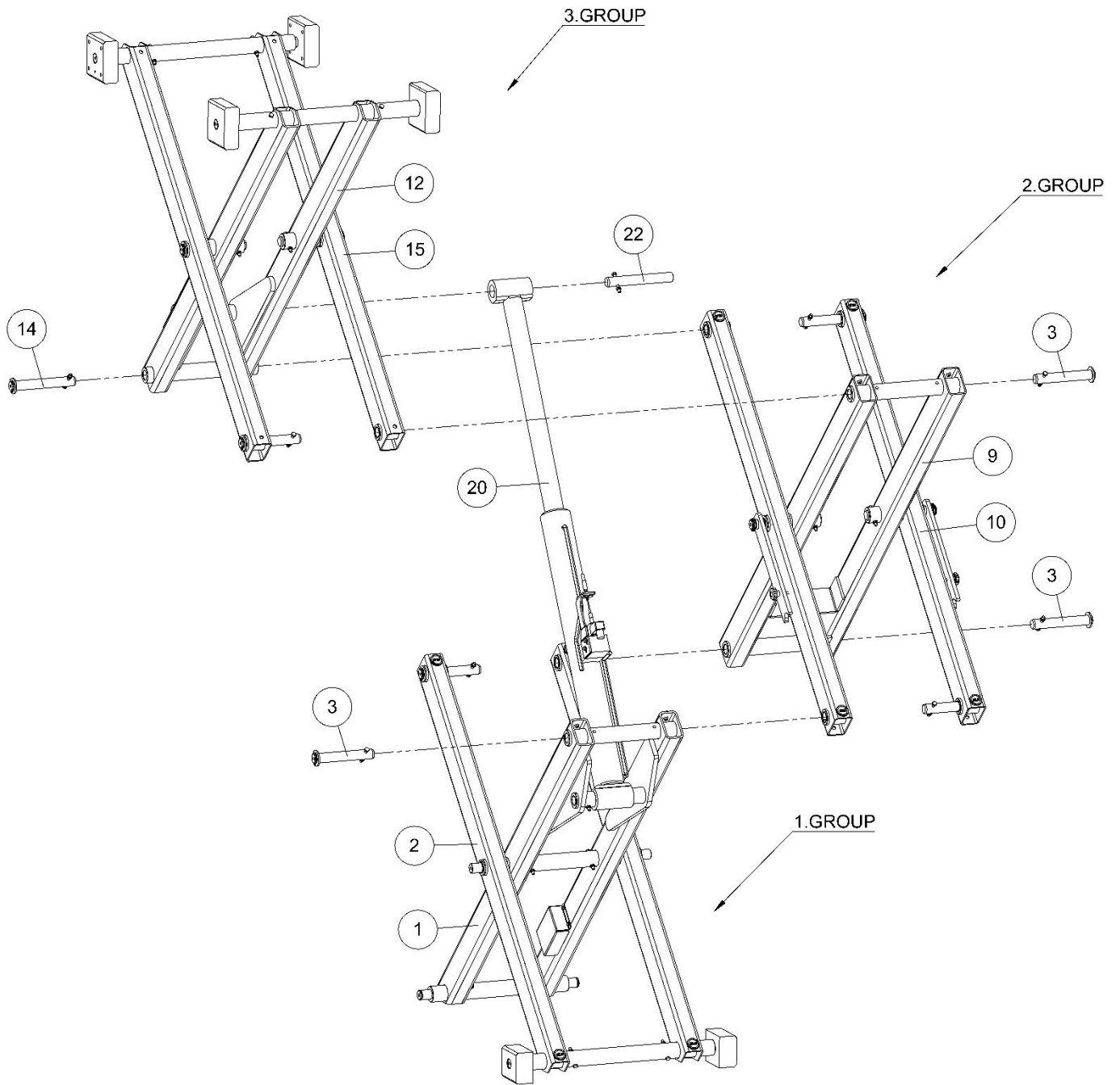
Item	Qty.	Description	Part No.
1	1	Platform control unit, platform linkage plate	19930700AA
2	1	Platform control unit protection plate	19930703AA
3	1	Platform control unit	E04120003AA
4	2	M10x25 Hex head cap screw DIN 518	S20010009AA
5	2	M10 Hex nut DIN 934 ISO 4029	S04010000AA

SCISSOR

EL 6-S SCISSOR GROUP

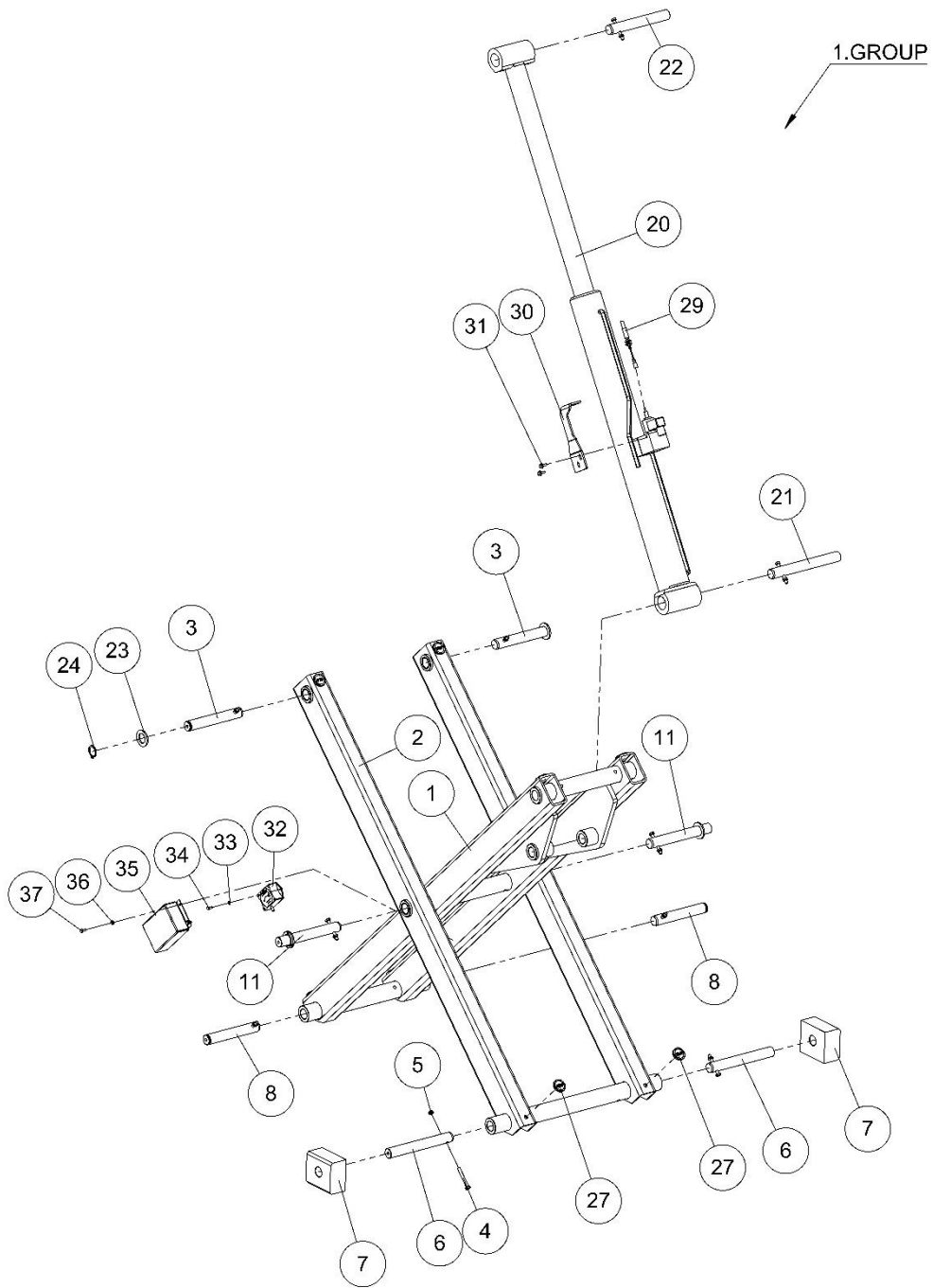
Scissor Assembly





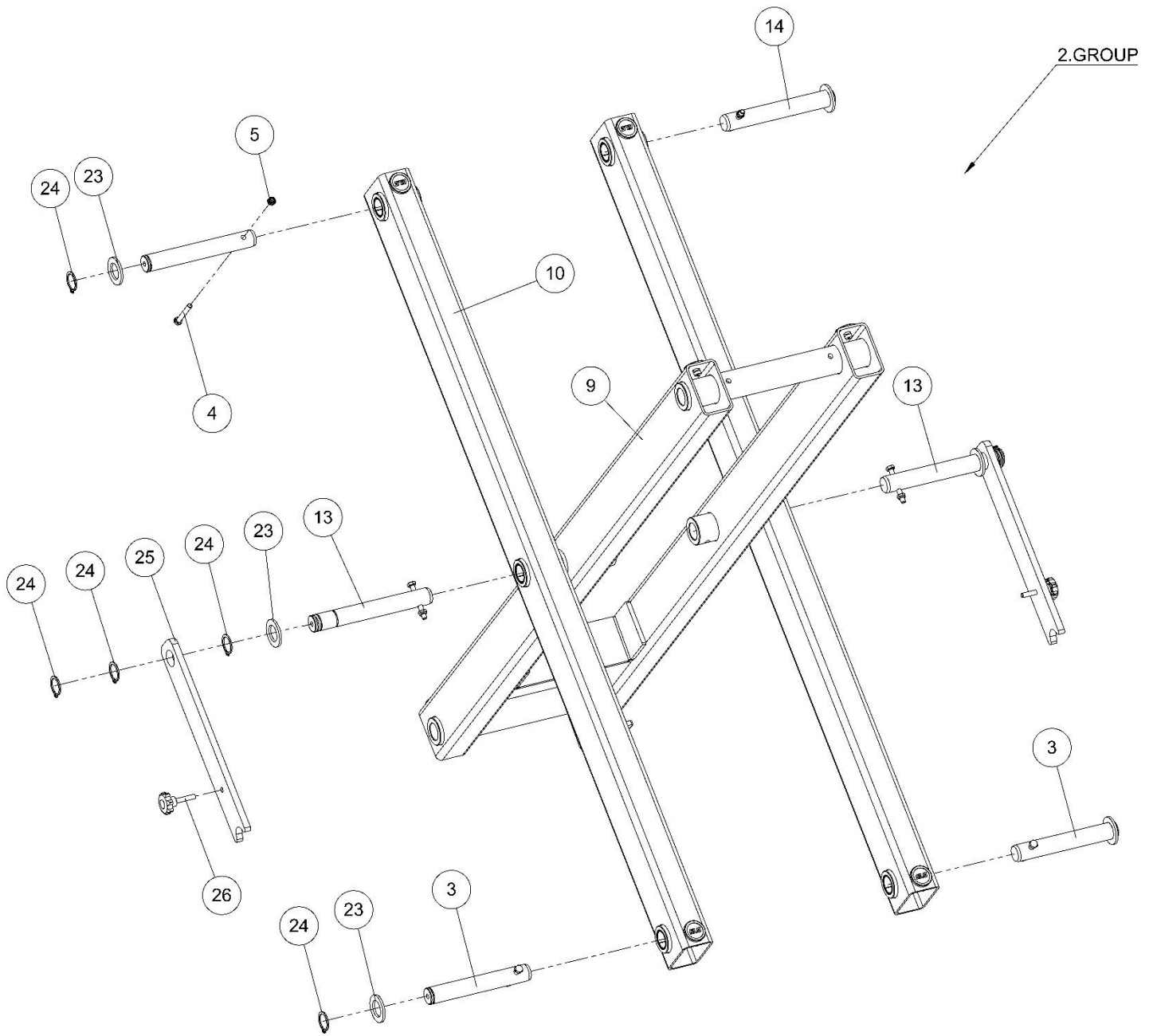
Item	Qty.	Description	Part No.
1	1	1. Inner arm weldment assembly	10620100AA
2	1	1. Outer arm assembly	10620200AA
3	6	Shaft	10620001AA
9	1	2. Inner arm weldment assembly	10620400AA
10	2	2. Outer arm assembly	10620600AA
12	1	3. Inner arm weldment assembly	10520100AA
14	2	Shaft	10620007AA
15	1	3. Outer arm assembly	10621000AA
20	1	Lift cylinder	H00510005AA
22	1	Cylinder, linkage shaft	10620013AA

Scisor Group 1 Assembly



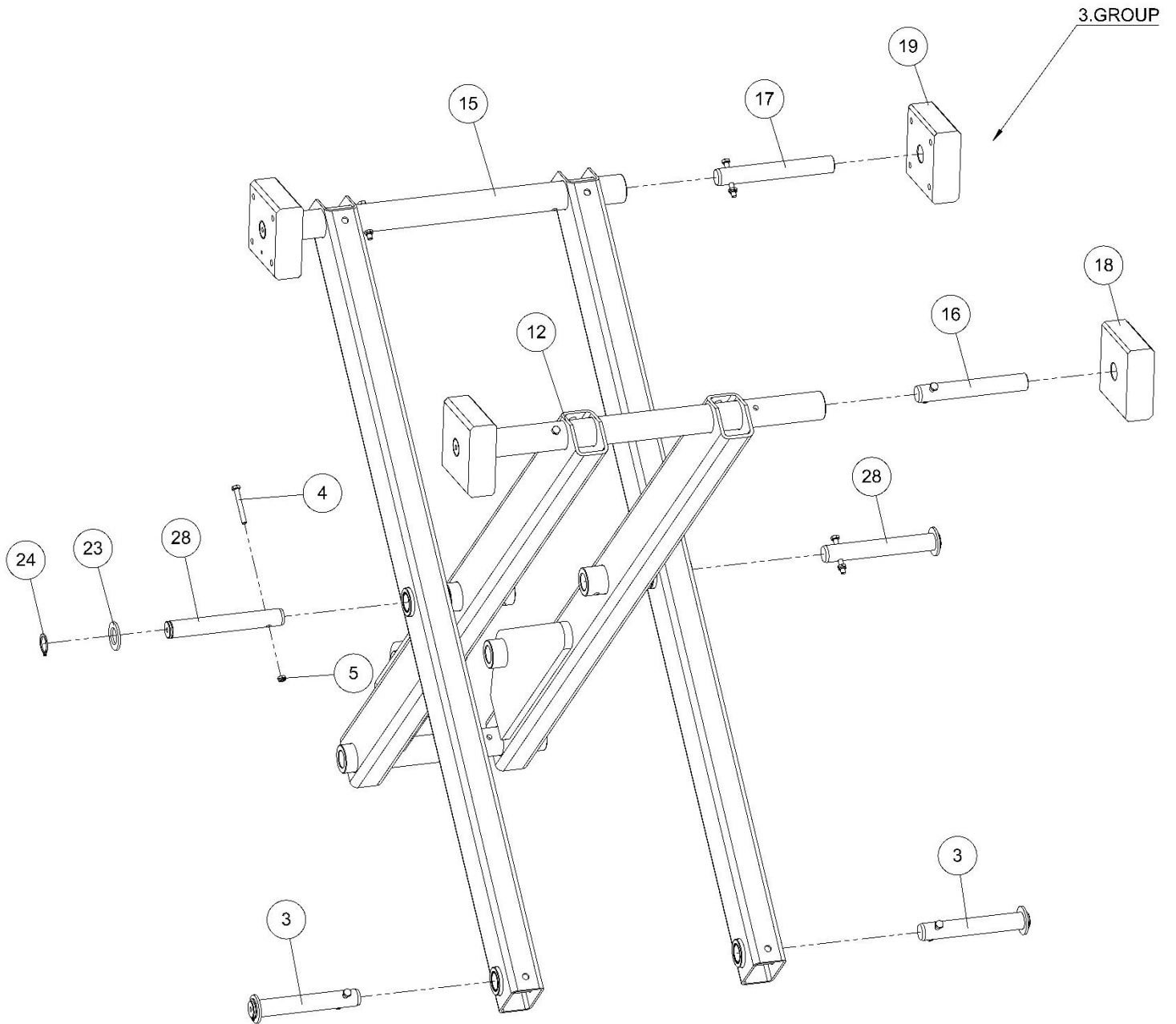
Item	Qty.	Description	Part No.
1	1	1. Inner arm weldment assembly	10620100AA
2	1	1. Outer arm assembly	10620200AA
3	6	Shaft	10620001AA
4	24	M8x65 Hex head cap screw DIN 518	S20008017AA
5	24	M8 Prevailing torque nut ISO 10511	S07008000AA
6	2	Bottom linkage support block shaft	10620002AA
7	2	Bottom linkage support block	10620003AA
8	2	Scissor, linkage shaft	10620004AA
11	2	Shaft	10620005AA
20	1	Lift cylinder	H00510005AA
21	1	Cylinder, linkage shaft	10620012AA
22	1	Cylinder, linkage shaft	10620013AA
23	14	Washer	19992602AA
24	18	Ø30 Circlip DIN 471	S14053000AA
27	16	ELS Cap	M01400001AA
29	1	Emergency lowering cable, cylinder linkage	M00600100AA
30	1	Emergency lowering cable, cylinder linkage plate	19992001AA
31	2	M6x16 Hexagon flange screw DIN 6921	S28006016AA
32	1	Angle sensor	E04301001AA
33	2	M5 Washer DIN 125	S01005000AA
34	2	M5x12 Hex head cap screw DIN 518	S20005004AA
35	1	Angle sensor protection plate	19992002AA
36	2	M6 Washer DIN 125	S01006000AA
37	2	M6x15 Hex head cap screw DIN 518	S20006004AA

Scissor Group 2 Assembly



Item	Qty.	Description	Part No.
3	6	Shaft	10620001AA
4	24	M8x65 Hex head cap screw DIN 518	S20008017AA
5	24	M8 Prevailing torque nut ISO 10511	S07008000AA
9	1	2. Inner arm weldment assembly	10620400AA
10	2	2. Outer arm assembly	10620600AA
13	2	Shaft	10520001AA
14	2	Shaft	10620007AA
23	14	Washer	19992602AA
24	18	Ø30 Circlip DIN 471	S14053000AA
25	2	Maintenance Rod	10620013AA
26	2	M8x40 Bakelite star knob	S30008012AA

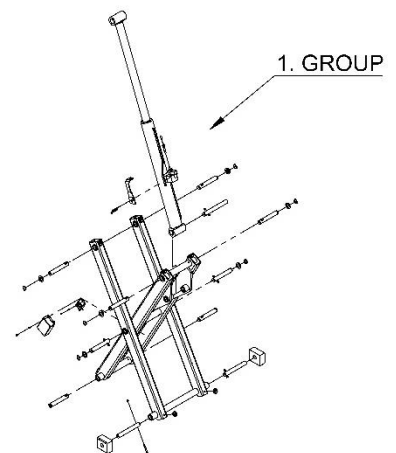
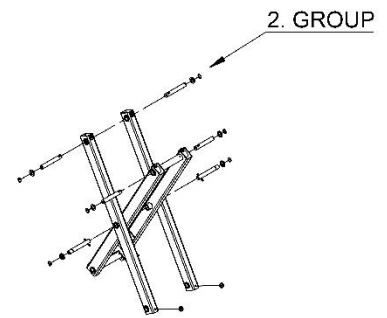
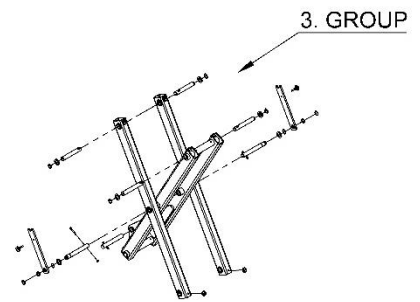
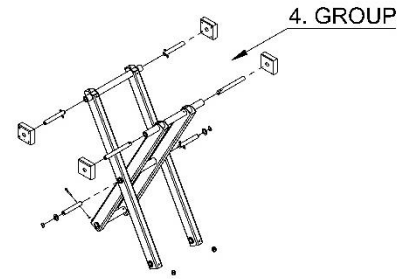
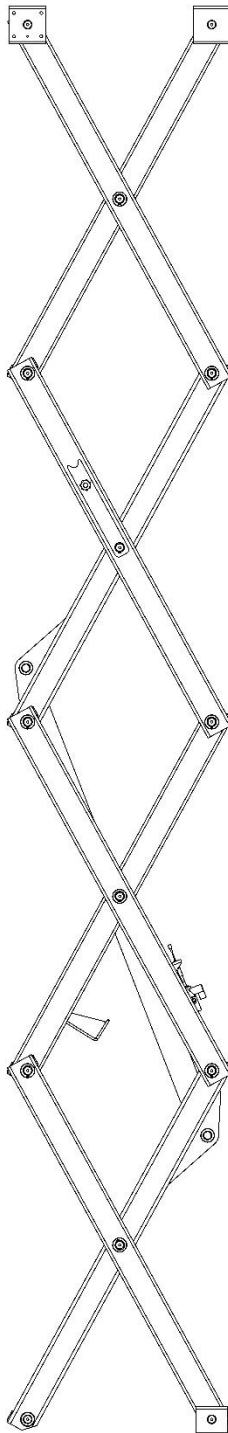
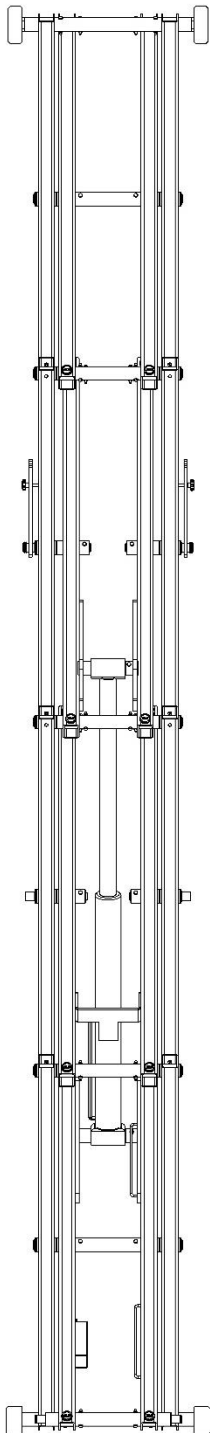
Scisor Group 3 Assembly

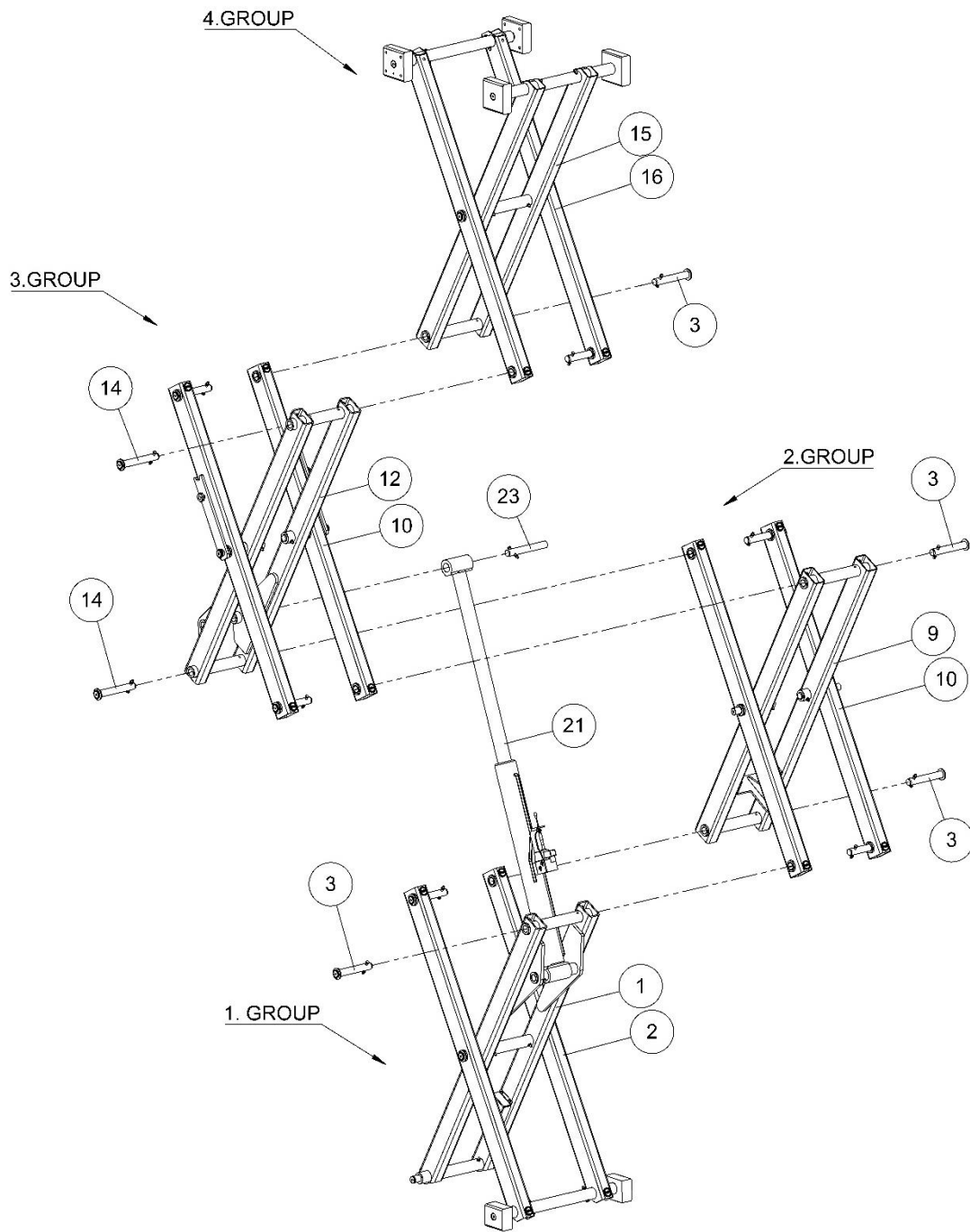


Item	Qty.	Description	Part No.
3	6	Shaft	10620001AA
4	24	M8x65 Hex head cap screw DIN 518	S20008017AA
5	24	M8 Prevailing torque nut ISO 10511	S07008000AA
15	1	3. Outer arm assembly	10621000AA
16	2	Shaft	10520003AA
17	2	Shaft	10620009AA
18	2	Top linkage support block 1	10620010AA
19	2	Top linkage support block 2	10620011AA
23	14	Washer	19992602AA
24	18	Ø30 Circlip DIN 471	S14053000AA
28	2	Shaft	10520002AA

EL 8-S SCISSOR GROUP

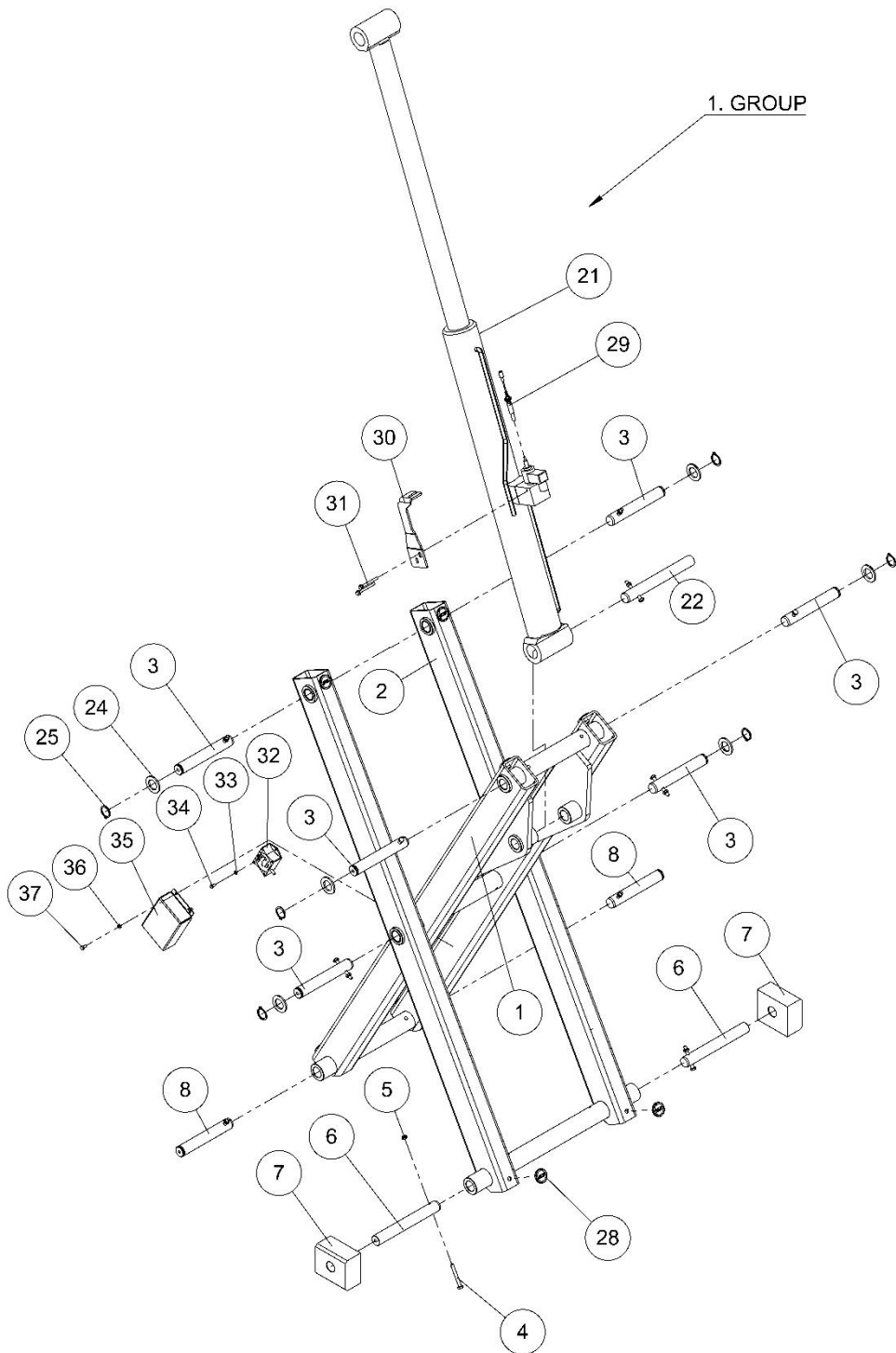
Scissor Assembly





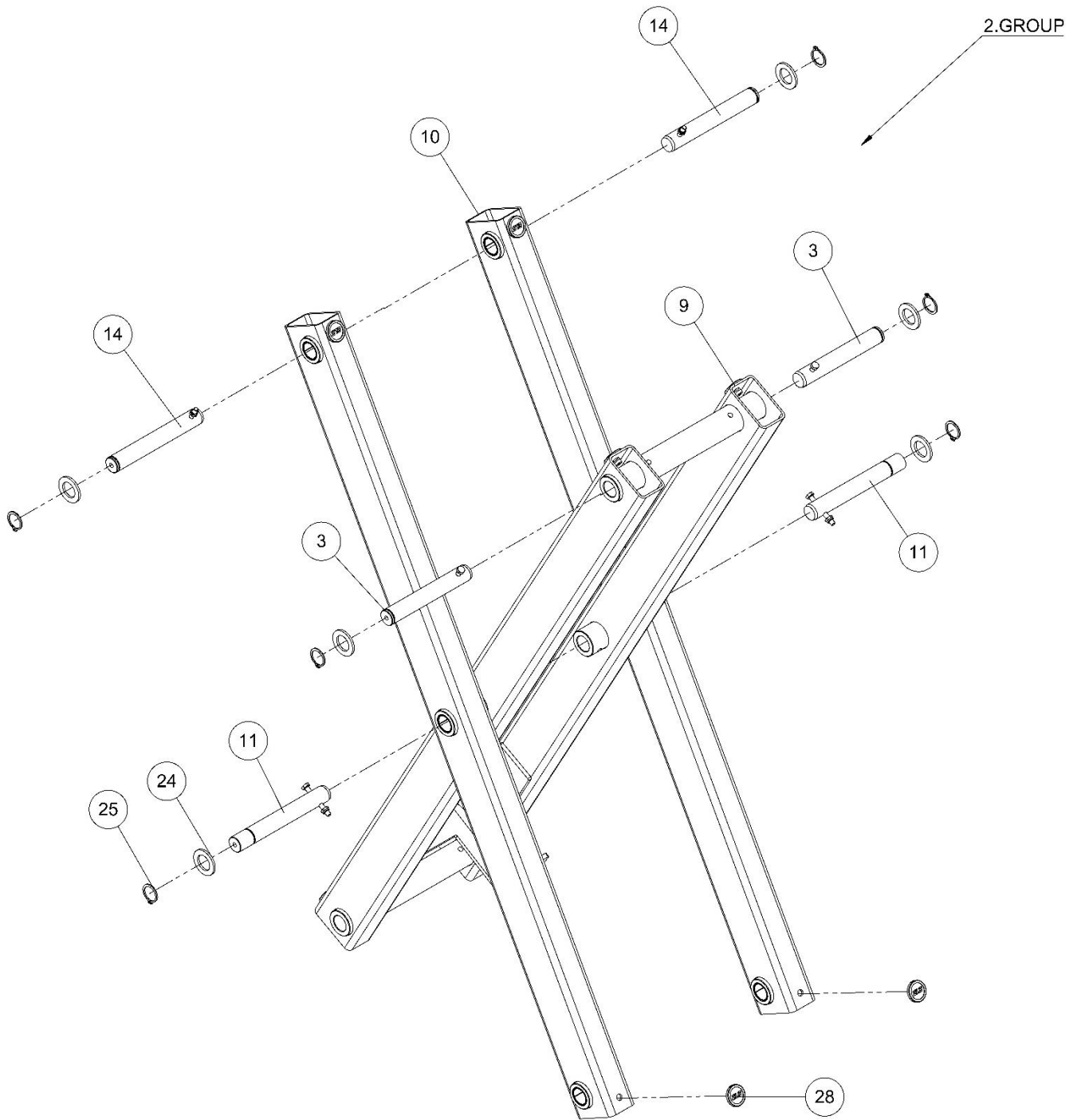
Item	Qty.	Description	Part No.
1	1	1. Inner arm weldment assembly	10620100AA
2	1	1. Outer arm assembly	10620200AA
3	12	Shaft	10620001AA
9	1	2. Inner arm weldment assembly	10620400AA
10	4	2. Outer arm assembly	10620600AA
12	1	3. Inner arm weldment assembly	10620800AA
14	4	Shaft	10620007AA
15	1	4. Inner arm weldment assembly	10620900AA
16	1	4. Outer arm assembly	10621000AA
21	1	Lift cylinder	H00510005AA
23	1	Cylinder, linkage shaft	10620013AA

Scissor Group 1 Assembly



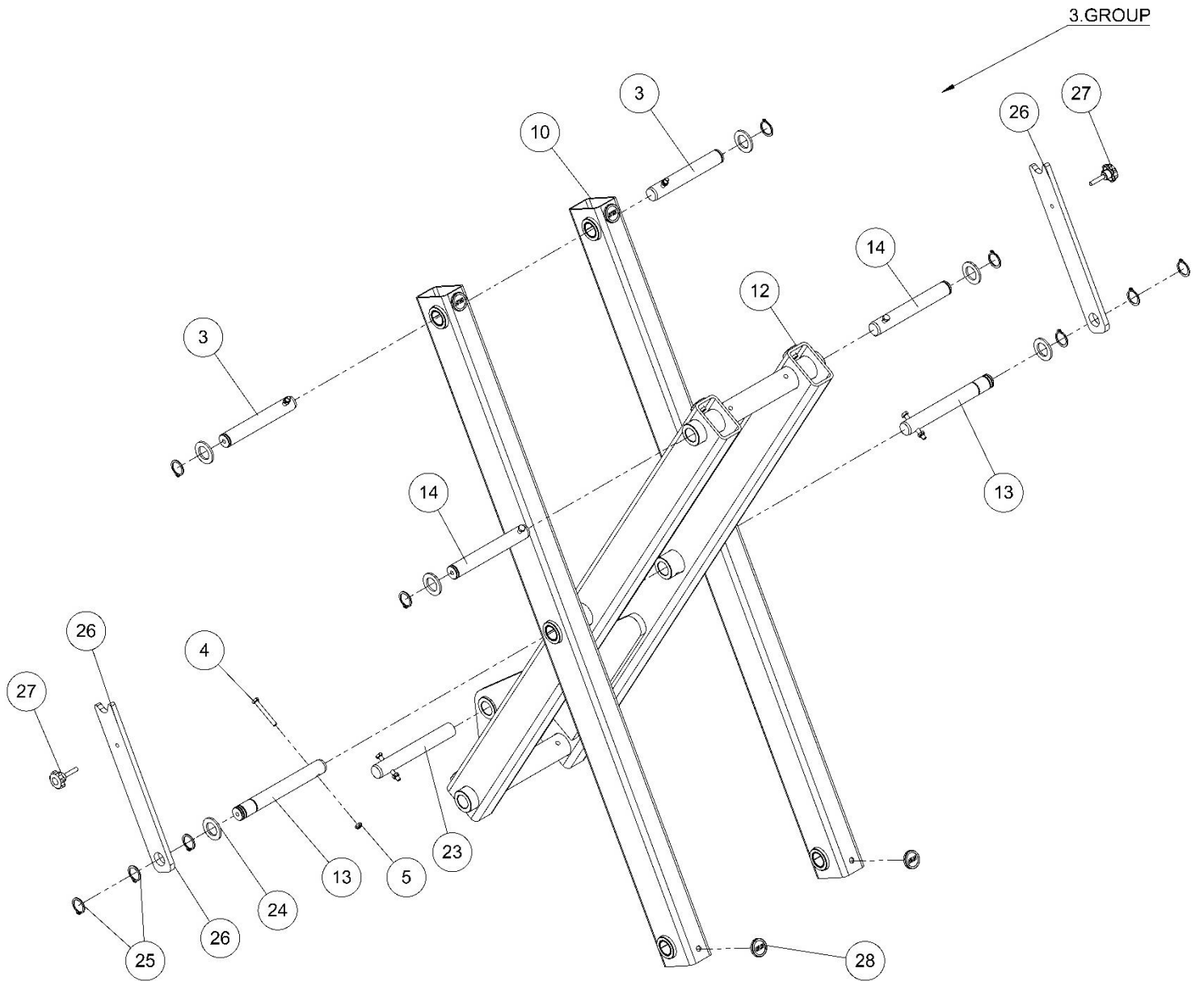
Item	Qty.	Description	Part No.
1	1	1. Inner arm weldment assembly	10620100AA
2	1	1. Outer arm assembly	10620200AA
3	12	Shaft	10620001AA
4	30	M8x65 Hex head cap screw DIN 518	S20008017AA
5	30	M8 Prevailing torque nut ISO 10511	S07008000AA
6	2	Bottom linkage support block shaft	10620002AA
7	2	Bottom linkage support block	10620003AA
8	2	Scissor, linkage shaft	10620004AA
21	1	Lift cylinder	H00510005AA
22	1	Cylinder, linkage shaft	10620012AA
24	20	Washer	19992602AA
25	24	Ø30 Circlip DIN 471	S14053000AA
28	28	ELS Cap	M01400001AA
29	1	Emergency lowering cable, cylinder linkage	M00600100AA
30	1	Emergency lowering cable, cylinder linkage plate	19992001AA
31	2	M6x16 Hexagon flange screw DIN 6921	S28006016AA
32	1	Angle sensor	E04301001AA
33	2	M5 Washer DIN 125	S01005000AA
34	2	M5x12 Hex head cap screw DIN 518	S20005004AA
35	1	Angle sensor protection plate	19992002AA
36	2	M6 Washer DIN 125	S01006000AA
37	2	M6x15 Hex head cap screw DIN 518	S20006004AA

Scissor Group 2 Assembly



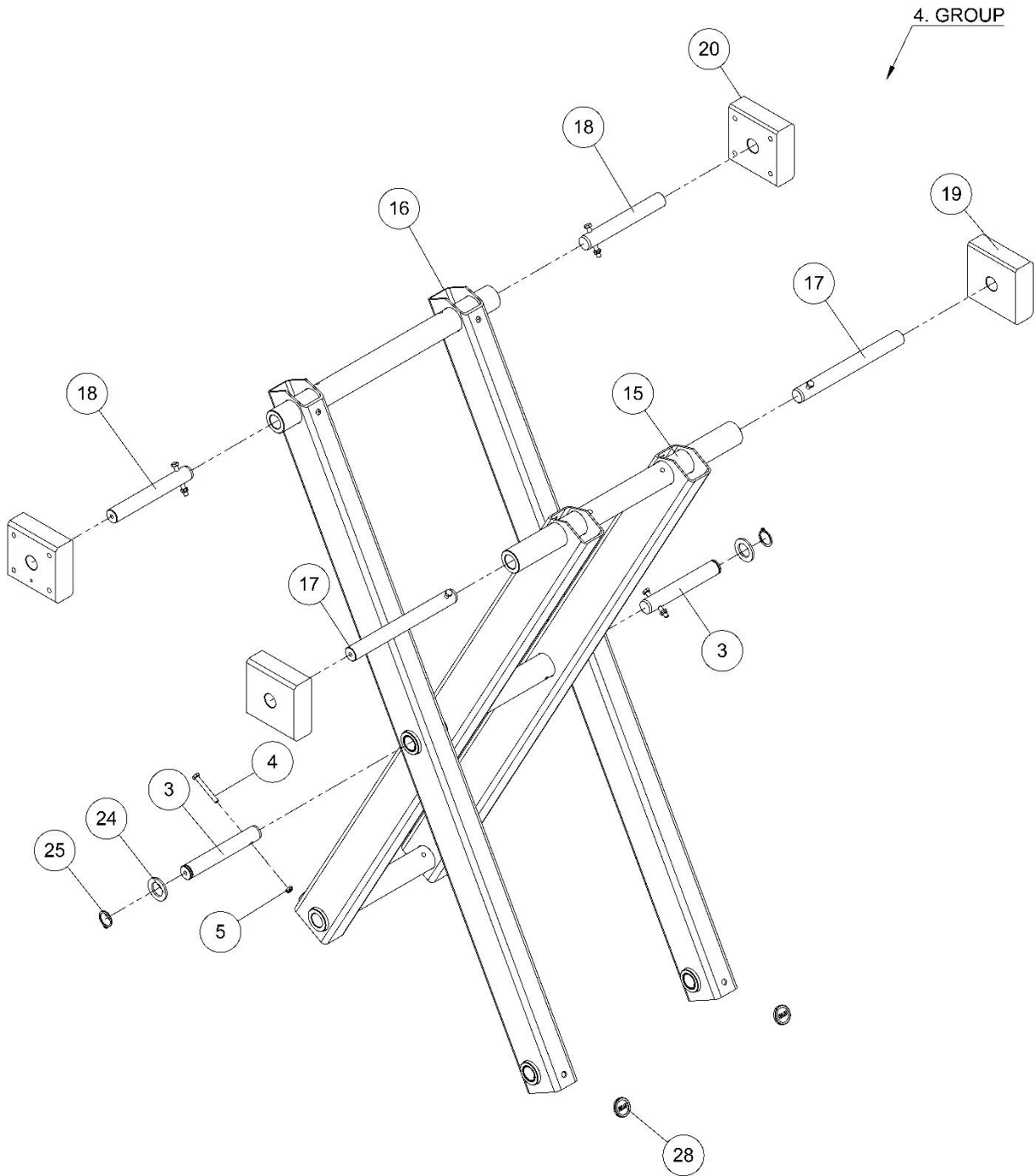
Item	Qty.	Description	Part No.
3	12	Shaft	10620001AA
9	1	2. Inner arm weldment assembly	10620400AA
10	4	2. Outer arm assembly	10620600AA
11	2	Shaft	10620005AA
14	4	Shaft	10620007AA
24	20	Washer	19992602AA
25	24	Ø30 Circlip DIN 471	S14053000AA
28	28	ELS Cap	M01400001AA

Scisor Group 3 Assembly



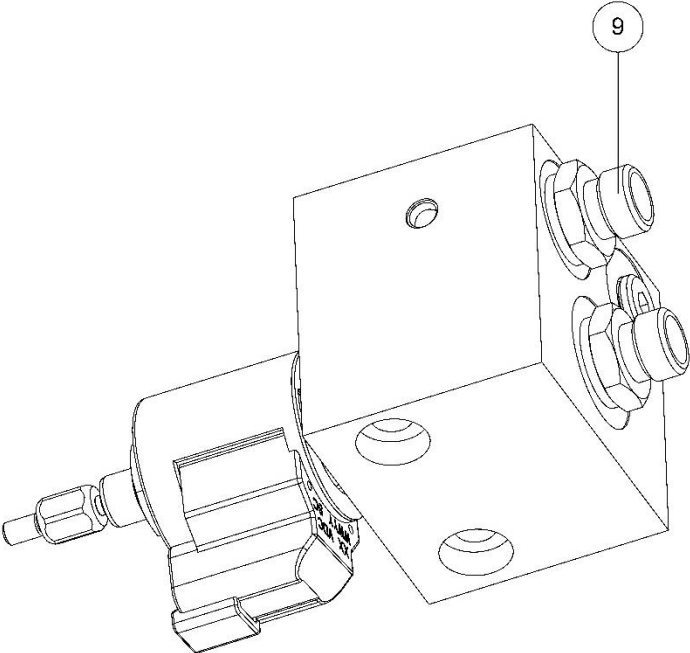
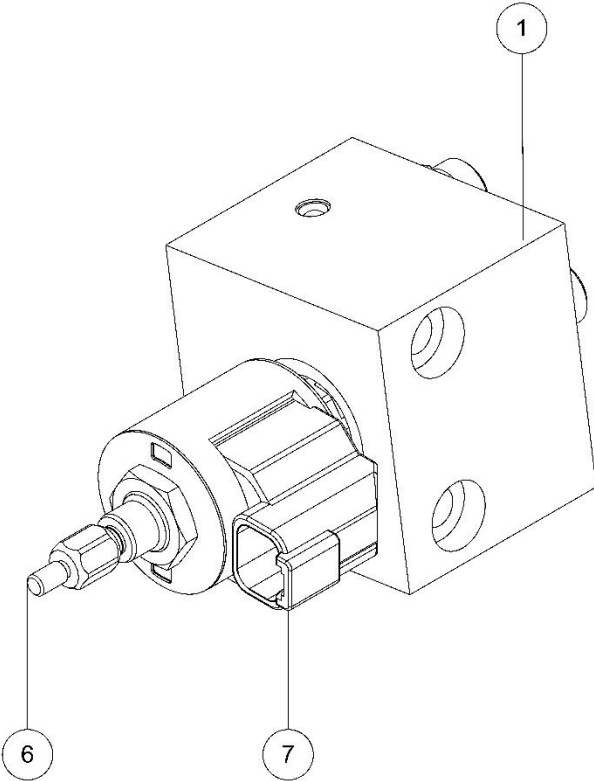
Item	Qty.	Description	Part No.
3	12	Shaft	10620001AA
4	30	M8x65 Hex head cap screw DIN 518	S20008017AA
5	30	M8 Prevailing torque nut ISO 10511	S07008000AA
10	4	2. Outer arm assembly	10620600AA
12	1	3. Inner arm weldent assembly	10620800AA
13	2	Shaft	10620006AA
14	4	Shaft	10620007AA
23	1	Cylinder, linkage shaft	10620013AA
24	20	Washer	19992602AA
25	24	Ø30 Circlip DIN 471	S14053000AA
26	2	Maintenance Rod	10620013AA
27	2	M8x40 Bakelite star knob	S30008012AA
28	28	ELS Cap	M01400001AA

Scissor Group 4 Assembly



Item	Qty.	Description	Part No.
3	12	Shaft	10620001AA
4	30	M8x65 Hex head cap screw DIN 518	S20008017AA
5	30	M8 Prevailing torque nut ISO 10511	S07008000AA
15	1	4. Inner arm weldment assembly	10620900AA
16	1	4. Outer arm assembly	10621000AA
17	2	Shaft	10620008AA
18	2	Shaft	10620009AA
19	2	Top linkage support block 1	10620010AA
20	2	Top linkage support block 2	10620011AA
24	20	Washer	19992602AA
25	24	Ø30 Circlip DIN 471	S14053000AA
28	28	ELS Cap	M01400001AA

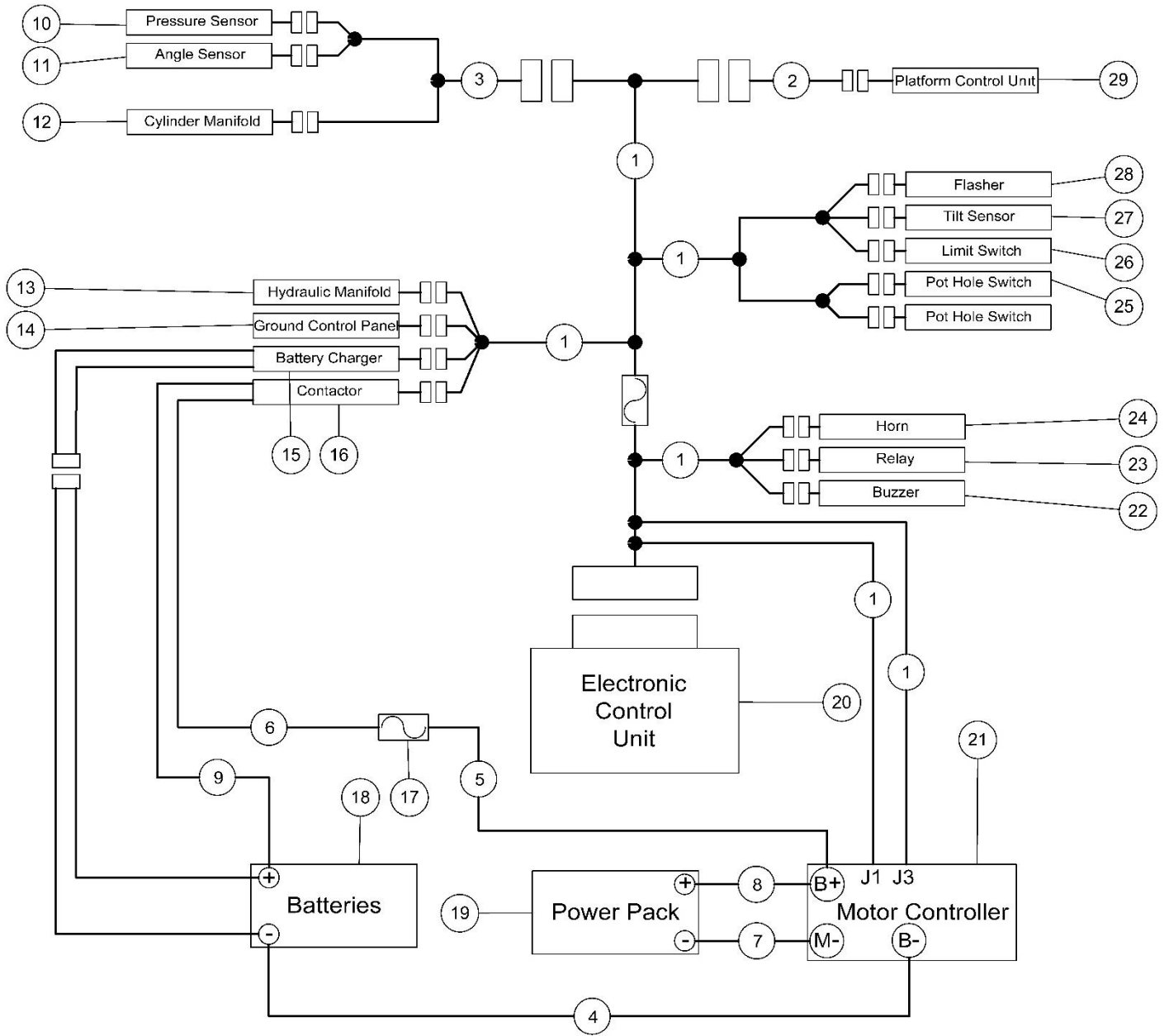
Cylinder Manifold



Item	Qty.	Description	Part No.
1	1	Bottom cylinder hydraulic block	H00700004AA
6	1	Solenoid valve 7	H00800007AA
7	1	Coil 03	H00900003AA
9	2	G1/4" Ø8L Connector	H10251005AA

ELECTRICAL WIRING DIAGRAM

EL 8-S EL 6-S Electrical Wiring Diagram

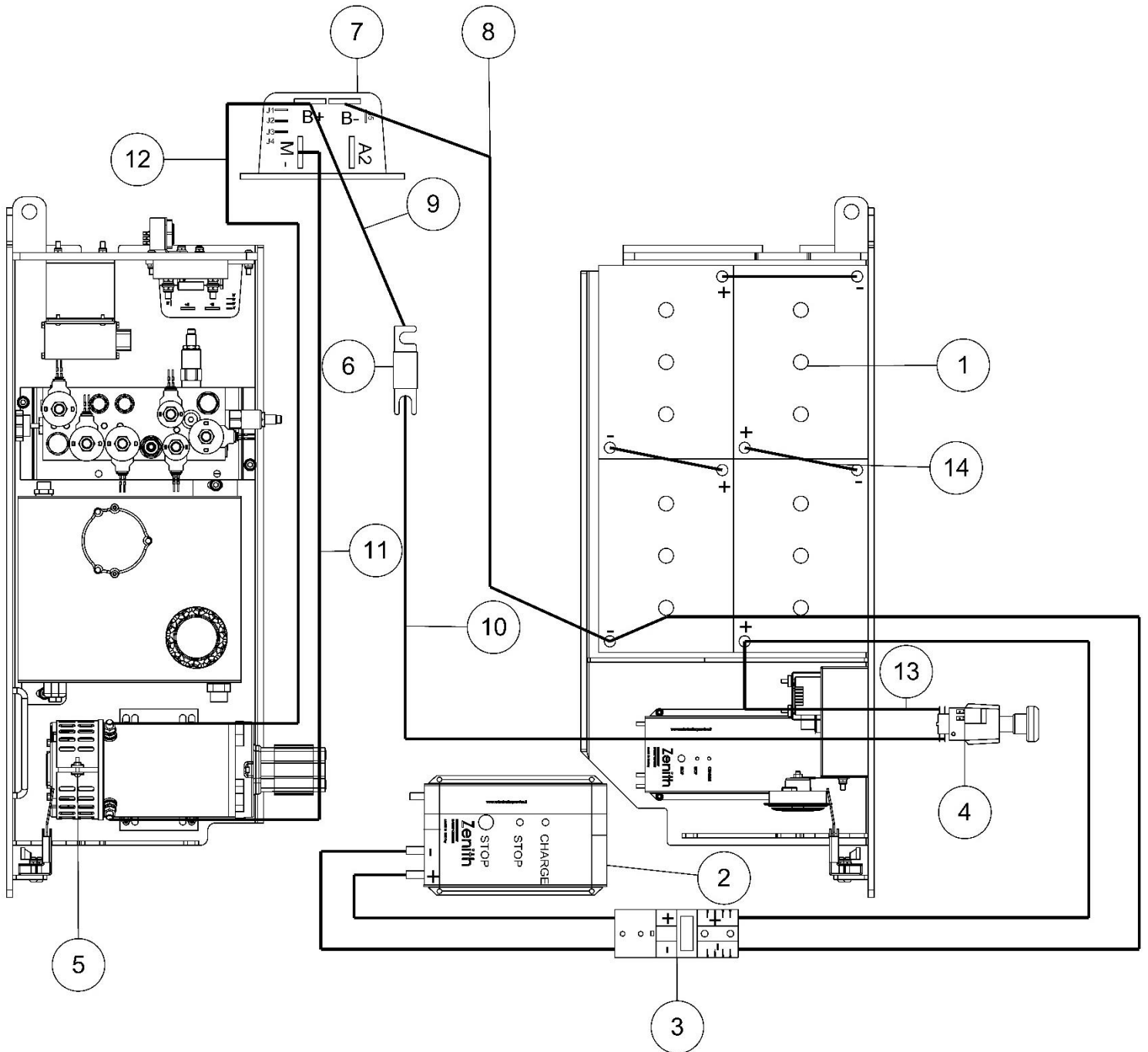


Item	Qty.	Description	Part No.
1	1	Cable assembly for chassis	E01211601AA
2	1	Cable assembly, scissors to platform control unit	E01211602AA
3	1	Cable assembly, chassis to scissors group	E01211603AA
4	1	Cable assembly, battery neg to motor controller B-	E01211605AA
5	1	Cable assembly, fuse to motor controller B+	E01211610AA
6	1	Cable assembly, contactor to fuse	E01211606AA
7	1	Cable assembly, power pack neg to motor controller M-	E01211608AA
8	1	Cable assembly, power pack pos to motor controller B+	E01211607AA
9	1	Cable assembly, battery pos to contactor	E01211604AA
10	1	Pressure sensor	E04303002AA
11	1	Angle sensor	E04301001AA
12	1	Cylinder manifold	H00600004AA
13	1	Hydraulic manifold	H00600001AA
14	1	Ground control panel assembly	-
15	1	24V 20A Battery charger	E00322001AA
16	1	Contactor	E00400001AA
17	1	Fuse	E01100002AA
18	4	6V 225A Batteries	E00212001AA
19	1	Hydraulic power pack	H00100001AA
20	1	Electronic control unit	E04110001AA
21	1	Motor controller	E04000001AA
22	1	Buzzer	E01600002AA
23	1	Relay	E01700001AA
24	1	Horn	E01020001AA

25	2	Pot hole switch	E00820003AA
26	1	Limit switch	E00820003AA
27	1	Tilt sensor	E04302001AA
28	1	Flasher	E00520001AA
29	1	Platform control unit	E04120003AA

POWER CABLE DIAGRAM

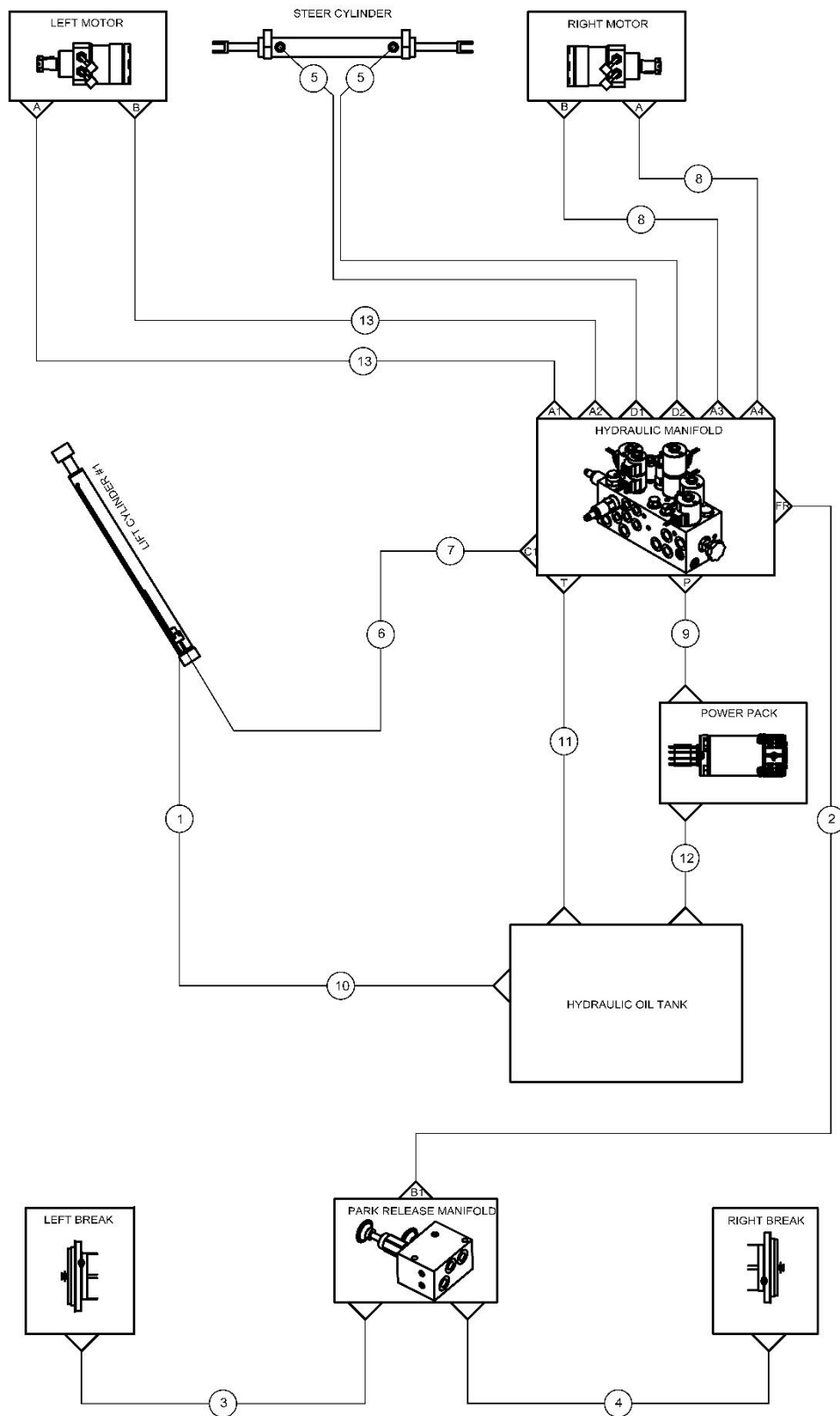
EL 8-S EL 6-S Power Cable Diagram



Item	Qty.	Description	Part No.
1	4	6V 225A Batteries	E00212001AA
2	1	24V 20A Battery charger	E00322001AA
3	1	Battery charger connector	E02100001AA
4	1	Main Switch	E00400001AA
5	1	Hydraulic power pack	H00100001AA
6	1	Fuse	E01100002AA
7	1	Motor controller	E04000001AA
8	1	Cable assembly, battery neg to motor controller B-	E01211605AA
9	1	Cable assembly, fuse to motor controller B+	E01211610AA
10	1	Cable assembly, contactor to fuse	E01211606AA
11	1	Cable assembly, power pack neg to motor controller M-	E01211608AA
12	1	Cable assembly, power pack pos to motor controller B+	E01211607AA
13	1	Cable assembly, battery pos to contactor	E01211604AA
14	3	Cable assembly, battery pos to battery neg	E01211609AA

HYDRAULIC CIRCUIT DIAGRAM

EL 8-S EL 6-S Hydraulic Circuit Diagram



Item	Qty.	Description	Part No.
1	1	Hose assembly, oil tank to lift cylinder	H02106024AA
2	1	Hose assembly, manifold to park release manifold	H02104005AA
3	1	Hose assembly, park release manifold to left break	H02104011AA
4	1	Hose assembly, park release manifold to right break	H02104011AA
5	2	Hose assembly, manifold to steer cylinder	H02104012AA
6	1	Hose assembly, manifold to lift cylinder	H02106025AA
7	1	Hose assembly, manifold to lift cylinder	H02106026AA
8	2	Hose assembly, manifold to right motor	H02106027AA
9	1	Hose assembly, manifold to power pack	H02106028AA
10	1	Hose assembly, oil tank to lift cylinder	H02106029AA
11	1	Hose assembly, manifold to filter	H02106030AA
12	1	Hose assembly, power pack to oil tank	H02107001AA
13	2	Hose assembly, manifold to left motor	H02106031AA