

***Part Manual***

***VM10-J***

***Serial Number***

***18018003-PRESENT***

*Rev. No: 00*

***ELS LIFT***

**CE**

**OUTPOWER  
THE GRAVITY.**

## TABLE OF CONTENTS

GENERAL INFORMATION .....	2
INTRODUCTION .....	2
DESCRIPTION .....	2
HOW TO ORDER PARTS .....	3
PARTS ORDER FORM .....	3
LEGEND .....	5
VM10-J LOCATION OF SAFETY INDICATORS .....	6
List of Symbols and Hazard Legends.....	8
Description of Symbols and Hazard Legends .....	9
CHASSIS .....	11
Chassis Assembly .....	11
Steering Assembly.....	15
1. Right .....	15
2. Left.....	15
1. Right.....	16
2. Left.....	16
Assembly Installation .....	17
TURNTABLE .....	20
Turntable Assembly.....	20
5. Mast Assembly .....	24
4. Mast Assembly .....	31
Chain Tension Ros Assembly and Mast Cylinder Linkage Aasmby.....	34
3. Mast Assembly .....	36
2. Mast Assembly .....	39
1. Mast Assembly .....	42
GCU Assembly .....	44
JIB – BASKET .....	47
1. Jib Arm.....	50
2. Jib Arm.....	50
PCU Assembly.....	51
ELECTRICAL WIRING DIAGRAM .....	53
HYDRAULIC CIRCUIT DIAGRAM .....	55

# GENERAL INFORMATION

## INTRODUCTION

This manual introduces the detailed information about machine spare parts. Every person who maintains, inspects, tests or repairs the machine must be qualified and authorized to do.

You should contact ELS Lift when you come across a situation other than described in this part manual.

Contact Us: [info@elslif.com](mailto:info@elslif.com)

[aftersales@elslift.com](mailto:aftersales@elslift.com)

## DESCRIPTION

**Machine Designation:** Machines are identified by the manufacture, according to some technical specifications of the machine.

**Description of Part Table:** Every figure has a table which is described of part's quantity, item, number, description.

**Part Manual Layout:** Manual is designed under section titles of machine. Chassis, platform, scissors are examples of some titles of machine.

**Non-Servised Parts:** In some cases, it is necessary to Show the parts and assemblies that do not require non-servised parts. These parts in the part table are indicated as "no longer used" or "not sold seperately".

**! USE THE ORIGINAL ELS SPARE PARTS FOR YOUR SAFETY !**

## HOW TO ORDER PARTS

When ordering replacement parts, please have the following machine information.

- ✓ Machine model number
- ✓ Machine serial number
- ✓ ELS part number
- ✓ Description of part
- ✓ Quantity of part
- ✓ Purchase order number
- ✓ Vat number
- ✓ Address for order to ship
- ✓ Desired method of shipment

Use the Part Order Form on the next page and mail or call your order to our After Sales Department.

### PARTS ORDER FORM

<b>Machine Model Number</b>	
<b>Machine Serial Number</b>	
<b>ELS Part Number</b>	
<b>Description of Part</b>	
<b>Quantity of Part</b>	
<b>Purchase Order Number</b>	
<b>Vat Number</b>	
<b>Address for Order to Ship</b>	
<b>Desired Method of Shipment</b>	

**Turkey**

**Els Lift Makine Sanayi Ticaret A.Ş**

Organize Sanayi Bölgesi Lacivert Cadde No:11

16140 Nilüfer/Bursa / TÜRKİYE

[info@elslift.com](mailto:info@elslift.com)

[aftersales@elslift.com](mailto:aftersales@elslift.com)

Tel: [+90 542 464 82 50](tel:+905424648250)

**France**

**Metaloc**

11-17 Rue Constantin Pecqueur

95150 Taverny, FRANCE

[www.metaloc.fr](http://www.metaloc.fr)

[contact@metaloc.fr](mailto:contact@metaloc.fr)

Tel: [01 30 40 20 99](tel:0130402099)

**Germany**

**Kunze GmbH**

Hermann-Oberth-Straße 3

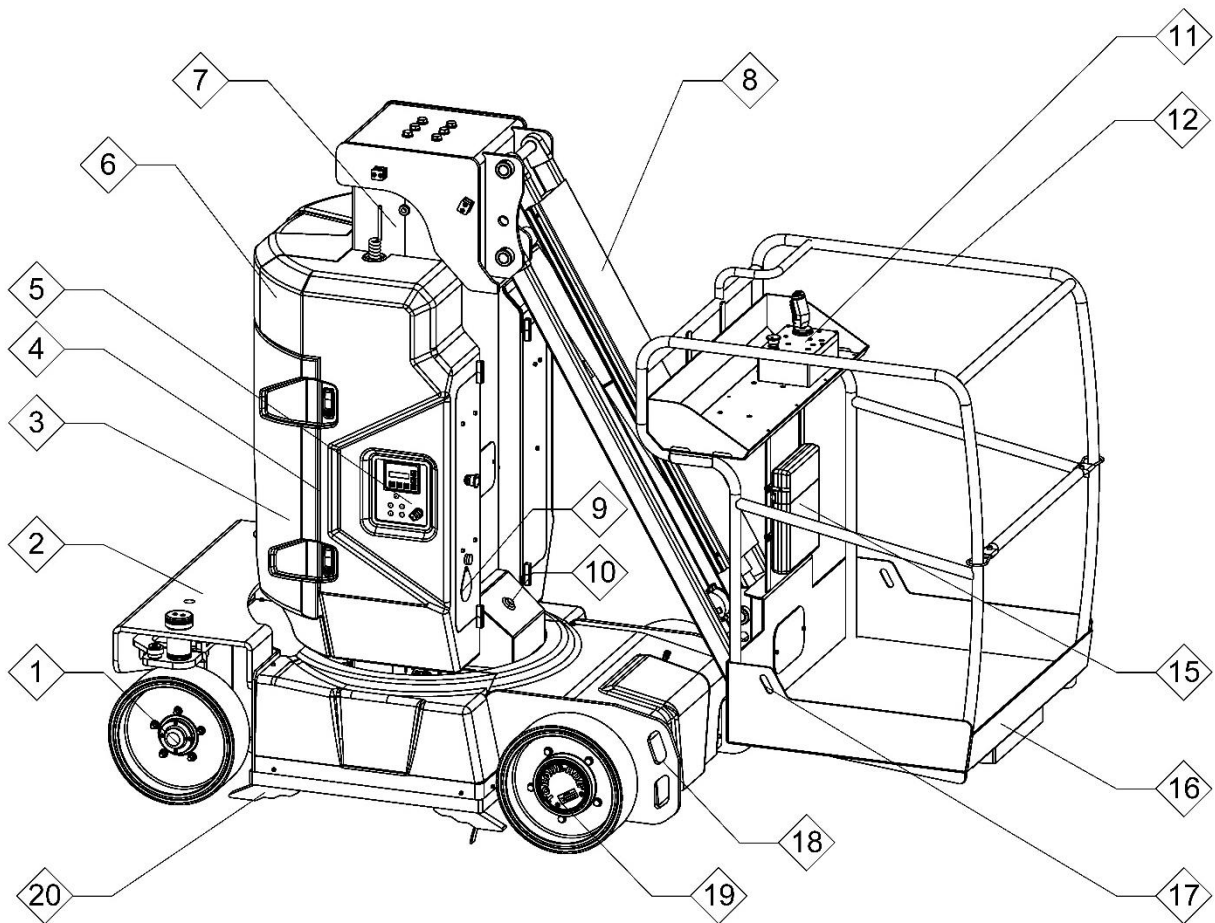
D - 83052 Bruckmühl

[www.kunze-buehnen.com](http://www.kunze-buehnen.com)

[info@kunze-buehnen.com](mailto:info@kunze-buehnen.com)

Tel: [+49 \(0\)8062/72611-0](tel:+4908062726110)

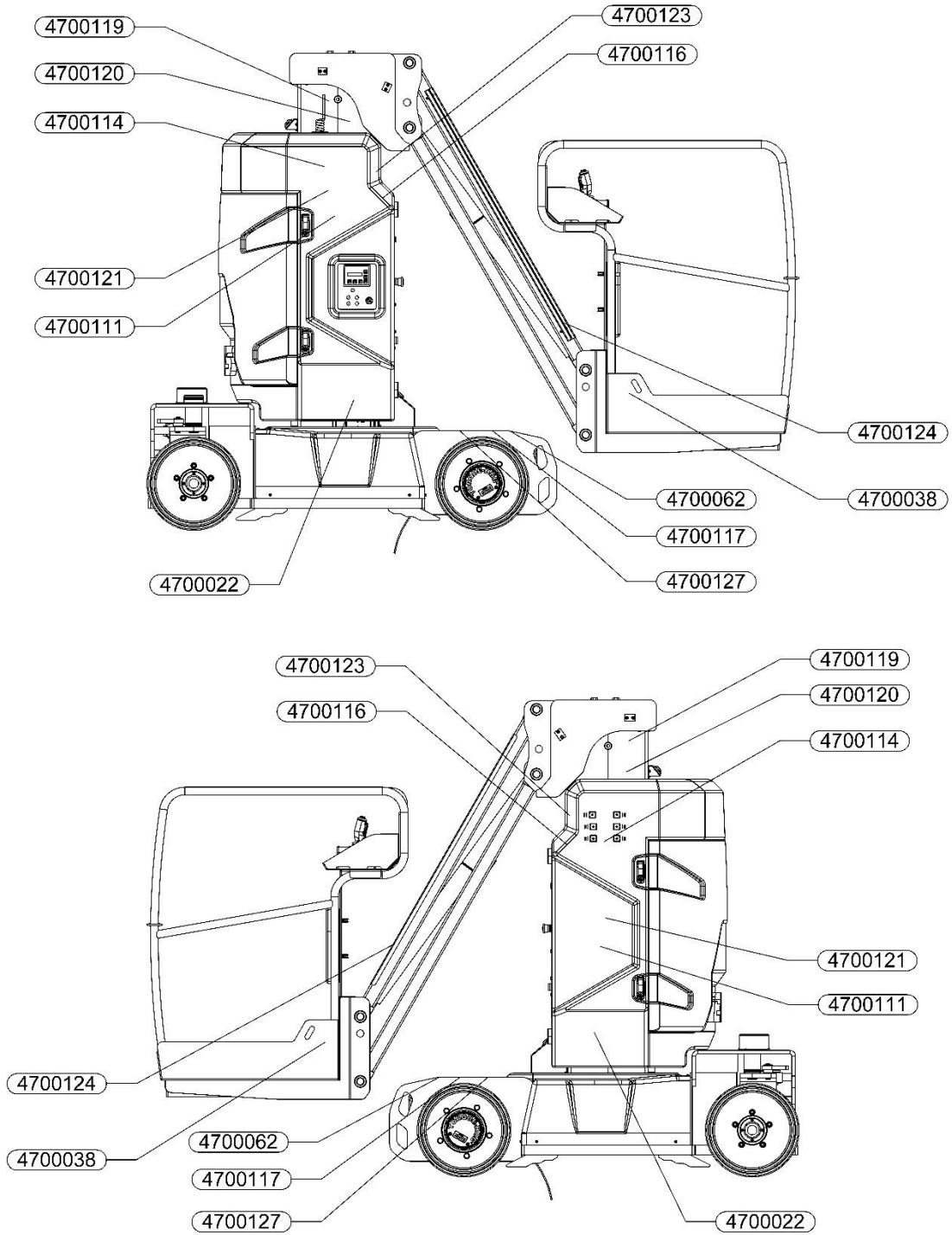
## LEGEND

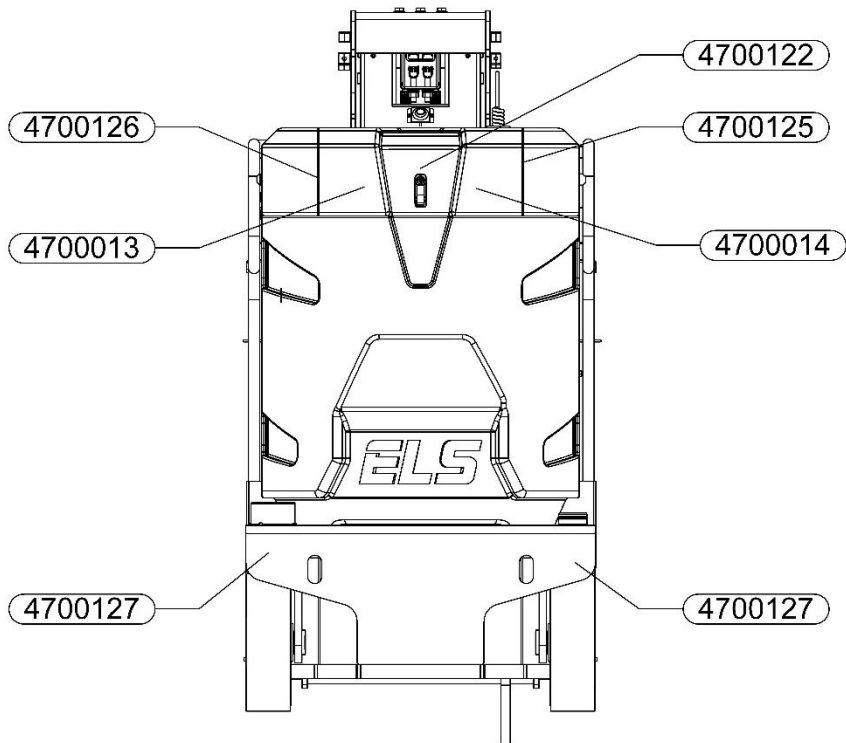
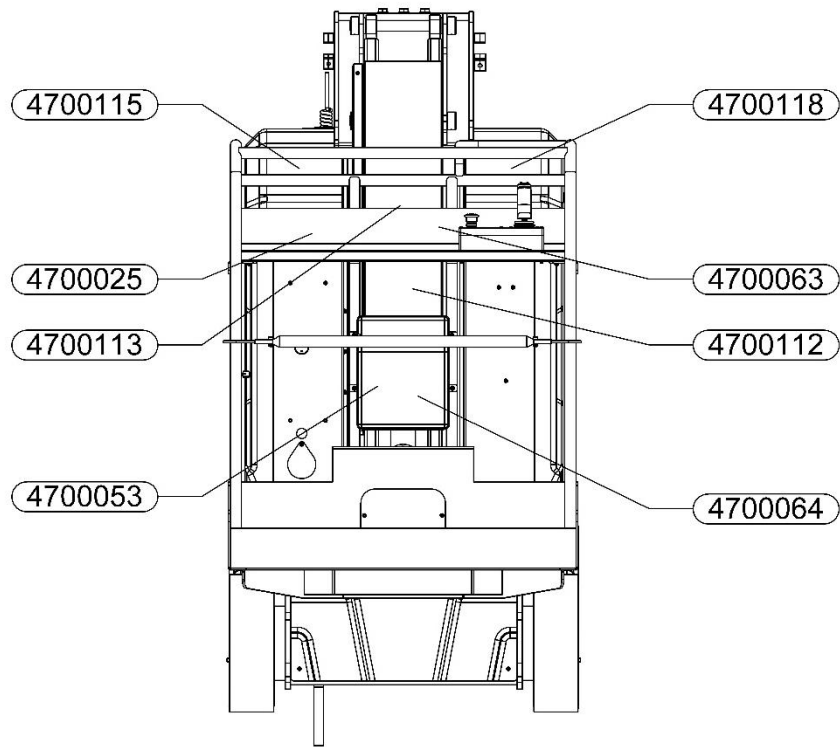


1. Steering Wheels
2. Chassis
3. Counter Weight
4. Turret
5. Ground Control Panel
6. Battery Pack
7. Mast
8. Jib
9. Battery Charger Plug
10. Flasher

11. Platform Control Panel
12. Platform Guide Rails
13. Working Light
14. Platform Entry Gate
15. Guide Storage Container
16. Platform
17. Lanyard Attachment Point
18. Tie Down
19. Drive Wheels

### VM10-J LOCATION OF SAFETY INDICATORS



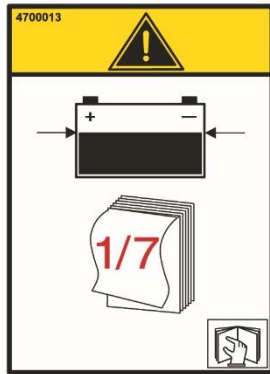




## List of Symbols and Hazard Legends

- 4700013 → Period of Battery Charge
- 4700014 → Wrong Using
- 4700022 → Crush Hazard
- 4700025 → Do not tie or disable gate
- 4700038 → Lanyard Attachment Point
- 4700053 → Read the operator's manual
- 4700063 → Fall Hazard
- 4700064 → No smoking
- 4700111 → These Sections are Accessible Only to Trained Personnel
- 4700112 → Stay Away from This Surface
- 4700113 → Collision Hazard
- 4700114 → Tip-over Hazard
- 4700115 → Electrocution Hazard
- 4700116 → Crush Hazard
- 4700117 → Chock Wheels Before Releasing Brakes
- 4700118 → Maintain Required Clearance
- 4700119 → Keep Away from Moving Parts
- 4700120 → Forbidden to Hook
- 4700121 → Keep Away from Elevated Components While Servicing Machine
- 4700122 → Electrocution/Burn Hazard
- 4700123 → Do not Stand Under Raised Platform
- 4700124 → Fall Hazard
- 4700125 → Electrocution/Fire Hazard
- 4700126 → No Open Flames

### Description of Symbols and Hazard Legends



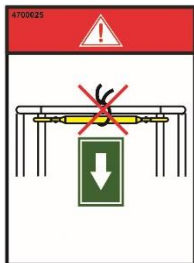
4700013



4700014



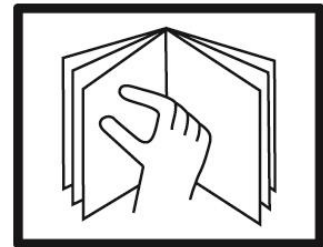
4700022



4700025



4700038



4700053



4700062



4700063



4700064



4700111



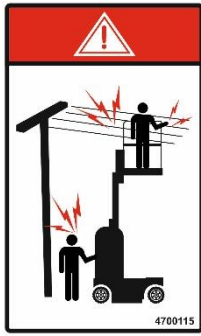
4700112



4700113



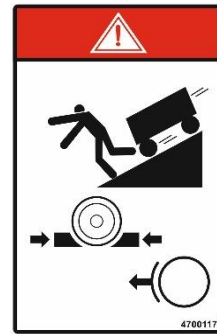
4700114



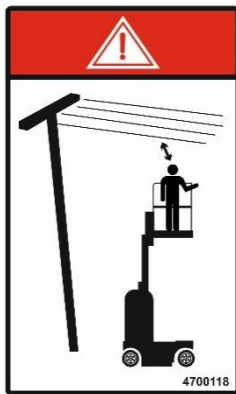
4700115



4700116



4700117



4700118



4700119



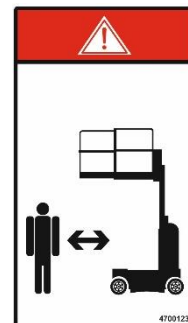
4700120



4700121



4700122



4700123



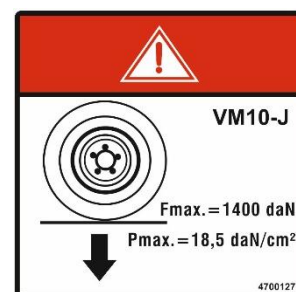
4700124



4700125



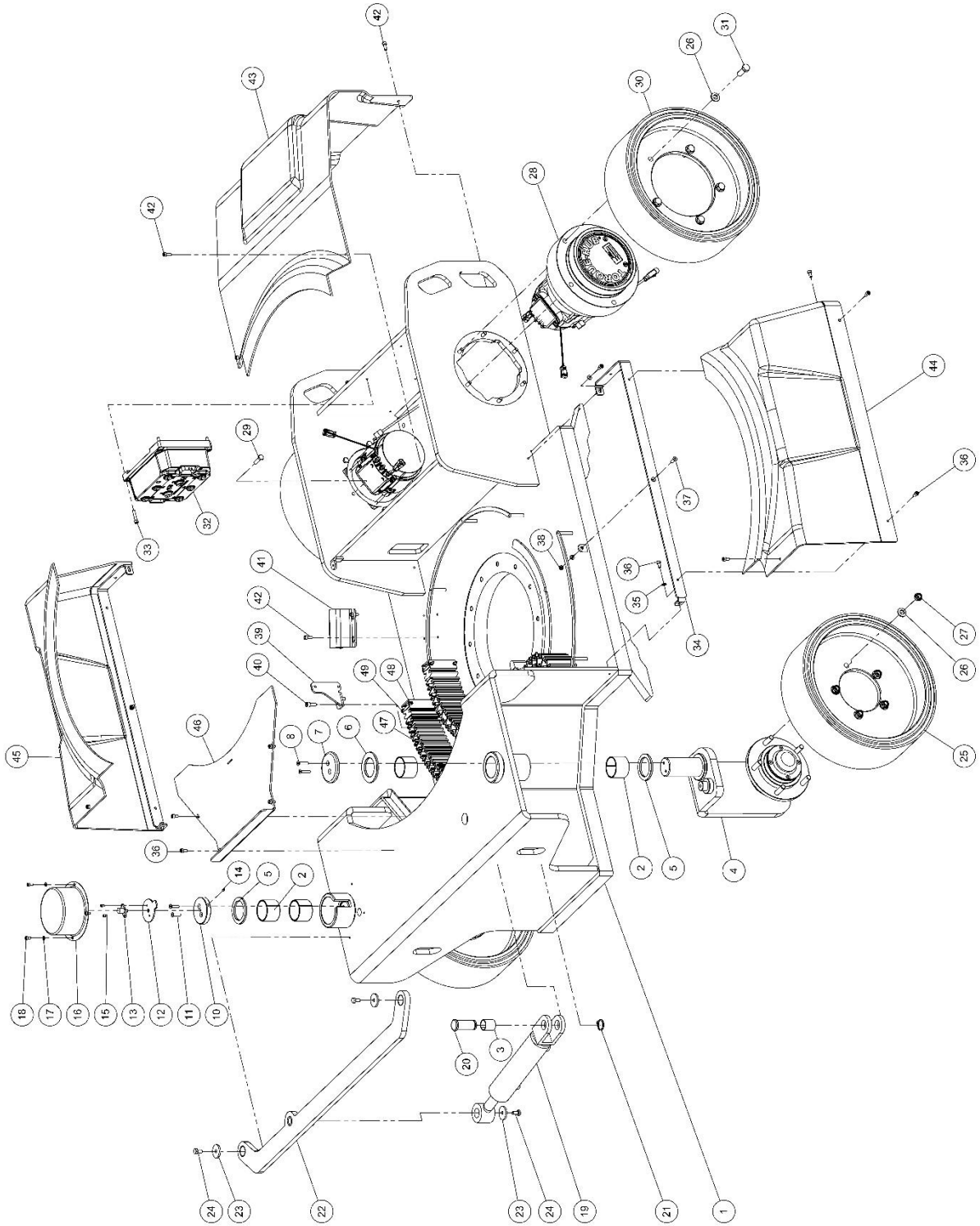
4700126

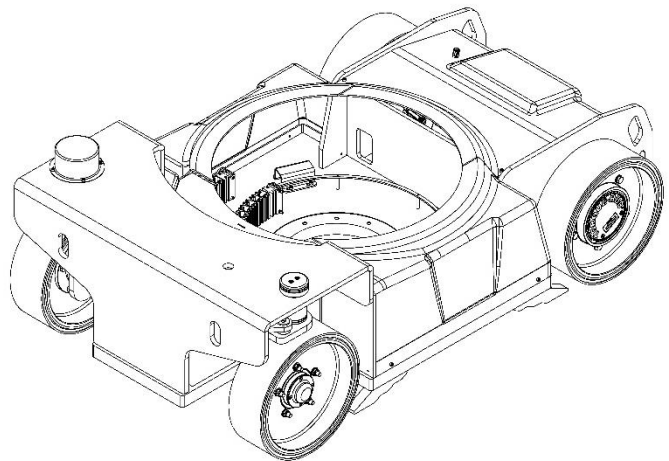
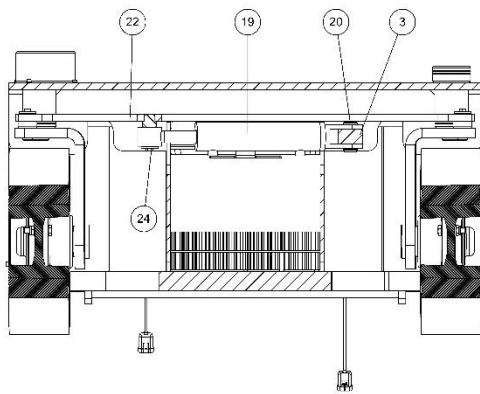
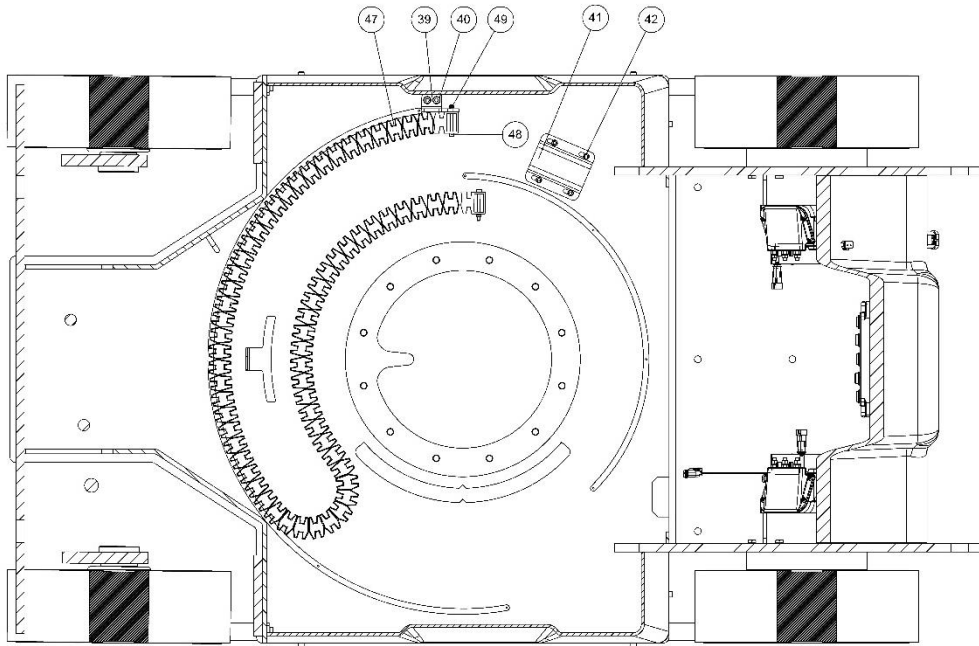


4700127

# CHASSIS

## Chassis Assembly



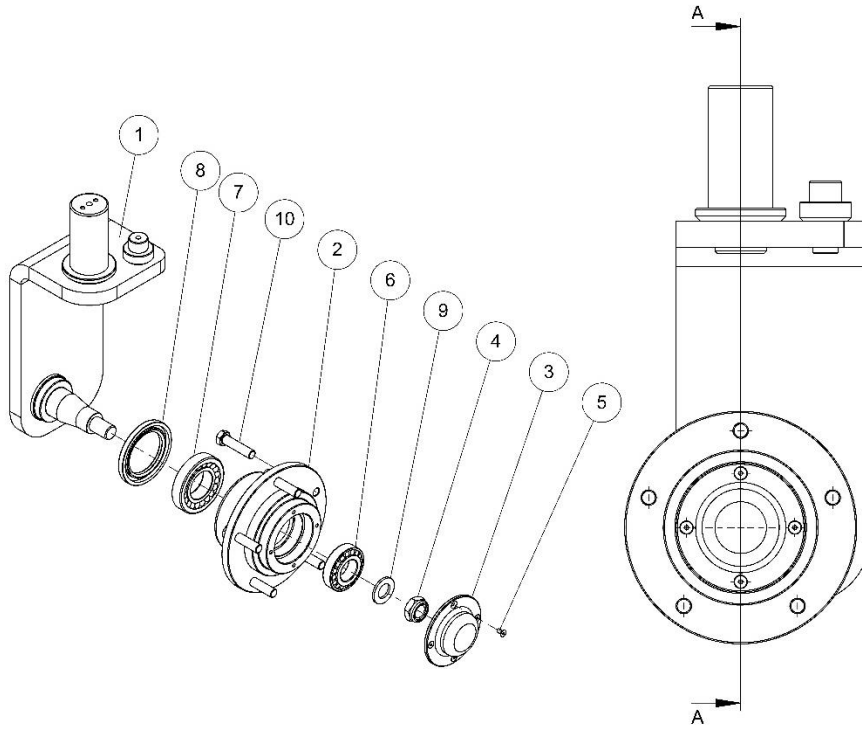


Item	Qty.	Description	Part No.
1	1	Chassis weldment assembly	70010100AA
2	4	Ø50x40 P10 Bearing	S31074012AA
3	1	Ø25x30 P20 Bearing	S31048010BA
4	1	Wheel steering assembly	70010300AA
5	3	Wheel steering bearing part	70010011AA
6	1	Wheel steering bearing part	70010010AA
7	1	Wheel steering assembly fixing part	70010012AA
8	2	M6x30 Hexagon socket countersunk head cap screw DIN 7991	S24006010AA
10	1	Wheel steering assembly fixing part	70010013AA
11	2	M6x25 Hexagon socket countersunk head cap screw DIN 7991	S24006009AA
12	1	Steering potantiometer fixing part	70010014AA
13	1	Steering potantiometer	E04400001AA
14	1	M4x8 Hexagon socket set screws with cup point DIN 916	S18004002AA
15	2	M4x6 Socket head cap screw DIN 912	S21004001AA
16	1	Steering potantiometer protection cover	70010015AA
17	4	M5 Washer DIN 125	S01005000AA
18	4	M5x10 Socket head cap screw DIN 912	S21005003AA
19	1	Steering Cylinder	H00570003AA
20	1	Steering cylinder linkage pin	70010009AA
21	1	Ø25 Circlip DIN 471	S14048000AA
22	1	Steering plate	70010700AA
23	3	M8 Washer	70010008AA
24	3	M8x15 Hex head cap screw DIN 518	S20008005AA
25	2	Wheel (Steering)	M00200006AA

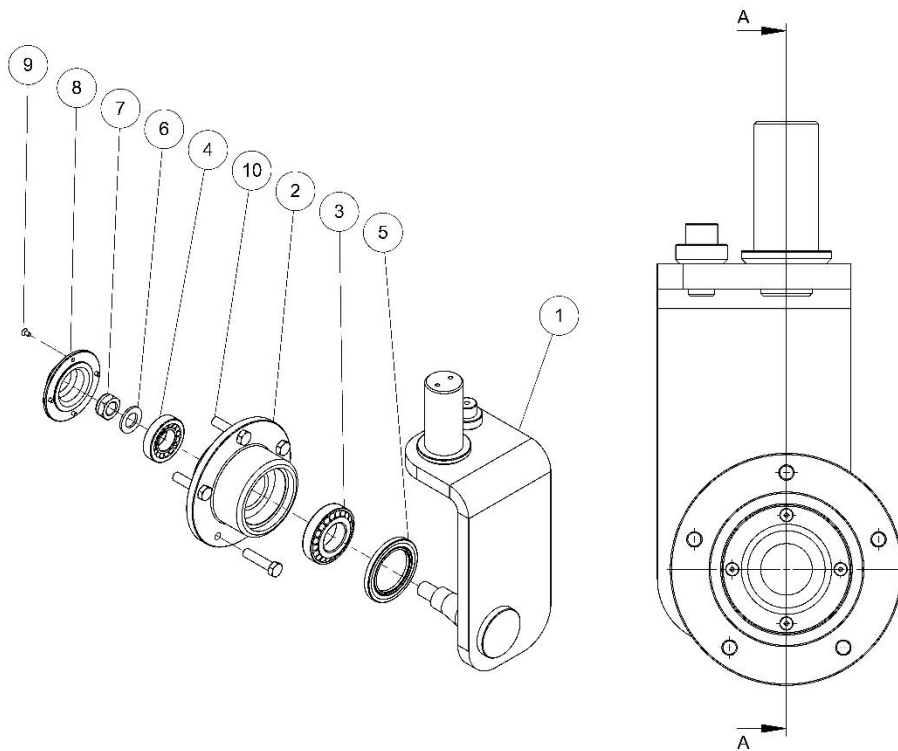
26	20	M12 Washer DIN 125	S01012000AA
27	10	M12 Prevailing torque nut ISO 10511	S07012000AA
28	2	Traction motor	70060001AA
29	12	M8x30 Hex head cap screw DIN 518	S20008010AA
30	2	Wheel (Traction)	M00200007AA
31	10	M12x35 Hex head cap screw DIN 518	S20054011AA
32	1	AC Motor controller	E04000002AA
33	4	M6x30 Socket head cap screw DIN 912	S21006010AA
34	2	Cover linkage plate	70010001AA
35	6	M6 Washer DIN 125	S01006000AA
36	16	M6x12 Socket head cap screw DIN 912	S21006004AA
37	2	M6x20 Hexagon socket countersunk head cap screw DIN 7991	S24006008AA
38	2	M6 Prevailing torque nut ISO 10511	S07006000AA
39	1	Flexible wireway fixing part	70010003AA
40	2	M8x20 Socket head cap screw DIN 912	S21008008AA
41	1	Wire protection plate	70010002AA
42	8	M6x16 Socket head cap screw DIN 912	S21006006AA
43	1	Chassis front cover	70010005AA
44	1	Chassis right cover	70010006AA
45	1	Chassis left cover	70010007AA
46	1	Chassis back cover	70010200AA
47	1	Flexible wireway	M01800001AA
48	4	M5x50 Socket head cap screw DIN 912	S21005014AA
49	4	M5 Prevailing torque nut ISO 10511	S07005000AA

### Steering Assembly

#### 1. Right



#### 2. Left





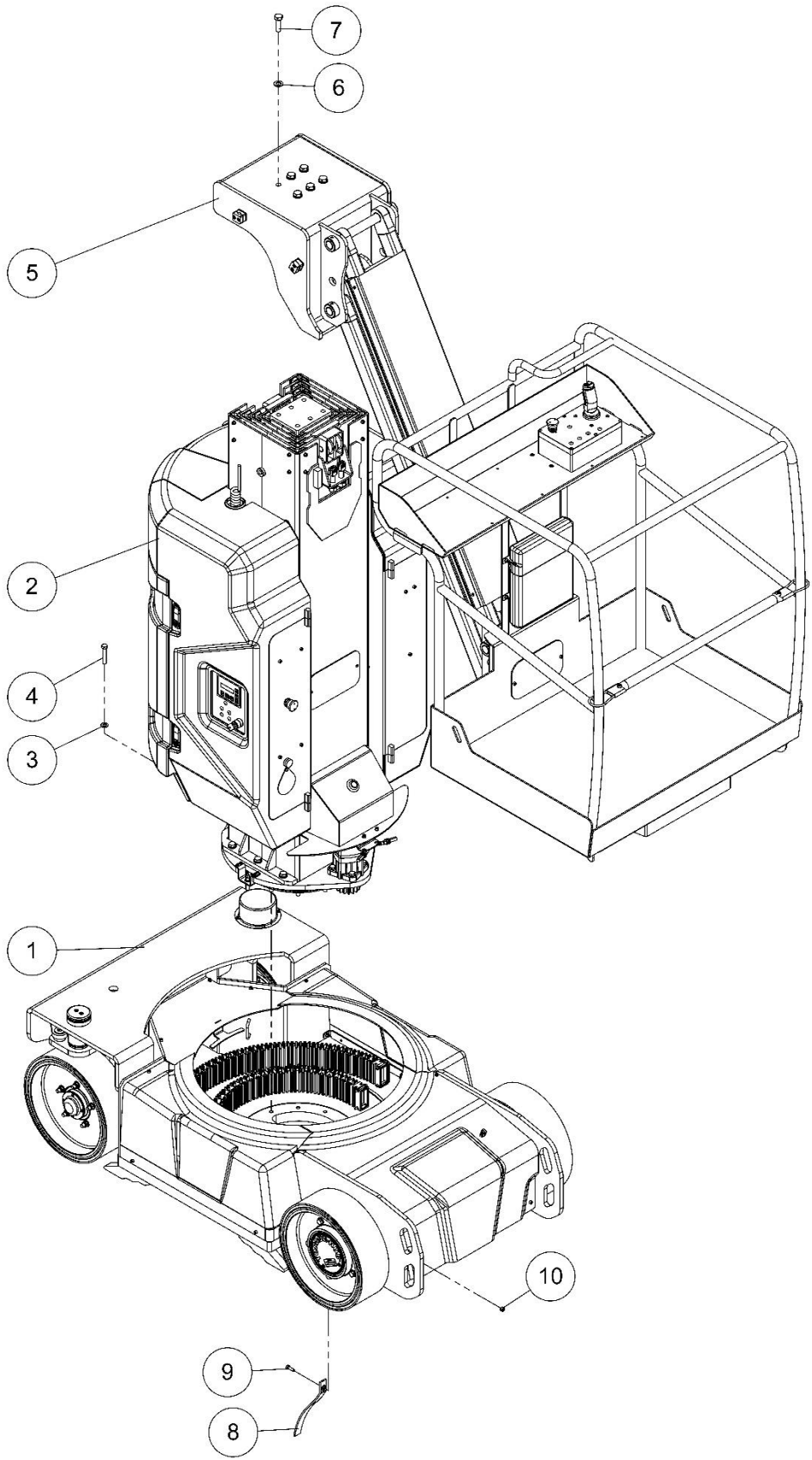
**1. Right**

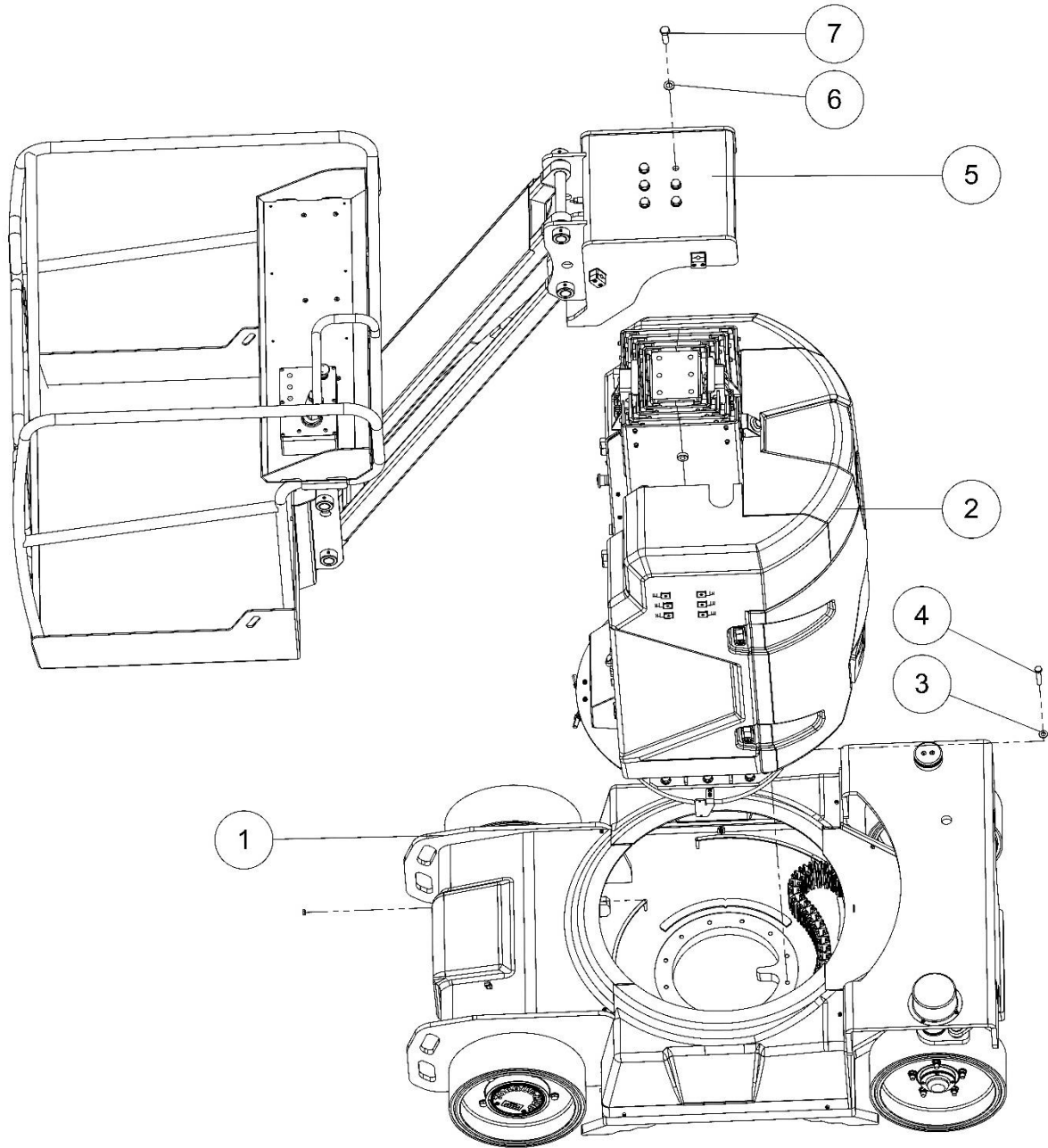
<b>Item</b>	<b>Qty.</b>	<b>Description</b>	<b>Part No.</b>
1	1	Wheel steering weldment assembly	70010600AA
2	1	Wheel steering linkage part	70010301AA
3	1	Wheel cover	70010302AA
4	1	M20 Prevailing torque nut ISO 10511	S07020000AA
5	4	M5x10 Hexagon socket countersunk head cap screw DIN 7991	S24005003AA
6	1	Bearing SKF	S42030206AA
7	1	Bearing SKF	S42030208AA
8	1	Sealing ring	M01900001AA
9	1	M20 Washer DIN 125	S01020000AA
10	5	M12x50 Hex head cap screw DIN 518	S20054014AA

**2. Left**

<b>Item</b>	<b>Qty.</b>	<b>Description</b>	<b>Part No.</b>
1	1	Wheel steering weldment assembly	70010400AA
2	1	Wheel steering linkage part	70010301AA
3	1	Bearing SKF	S42030208AA
4	1	Bearing SKF	S42030206AA
5	1	Sealing ring	S4506009008
6	1	M20 Washer DIN 125	S01020000AA
7	1	M20 Prevailing torque nut ISO 10511	S07020000AA
8	1	Wheel cover	70010302AA
9	4	M5x10 Hexagon socket countersunk head cap screw DIN 7991	S24005003AA
10	5	M12x50 Hex head cap screw DIN 518	S20054014AA

### Assembly Installation

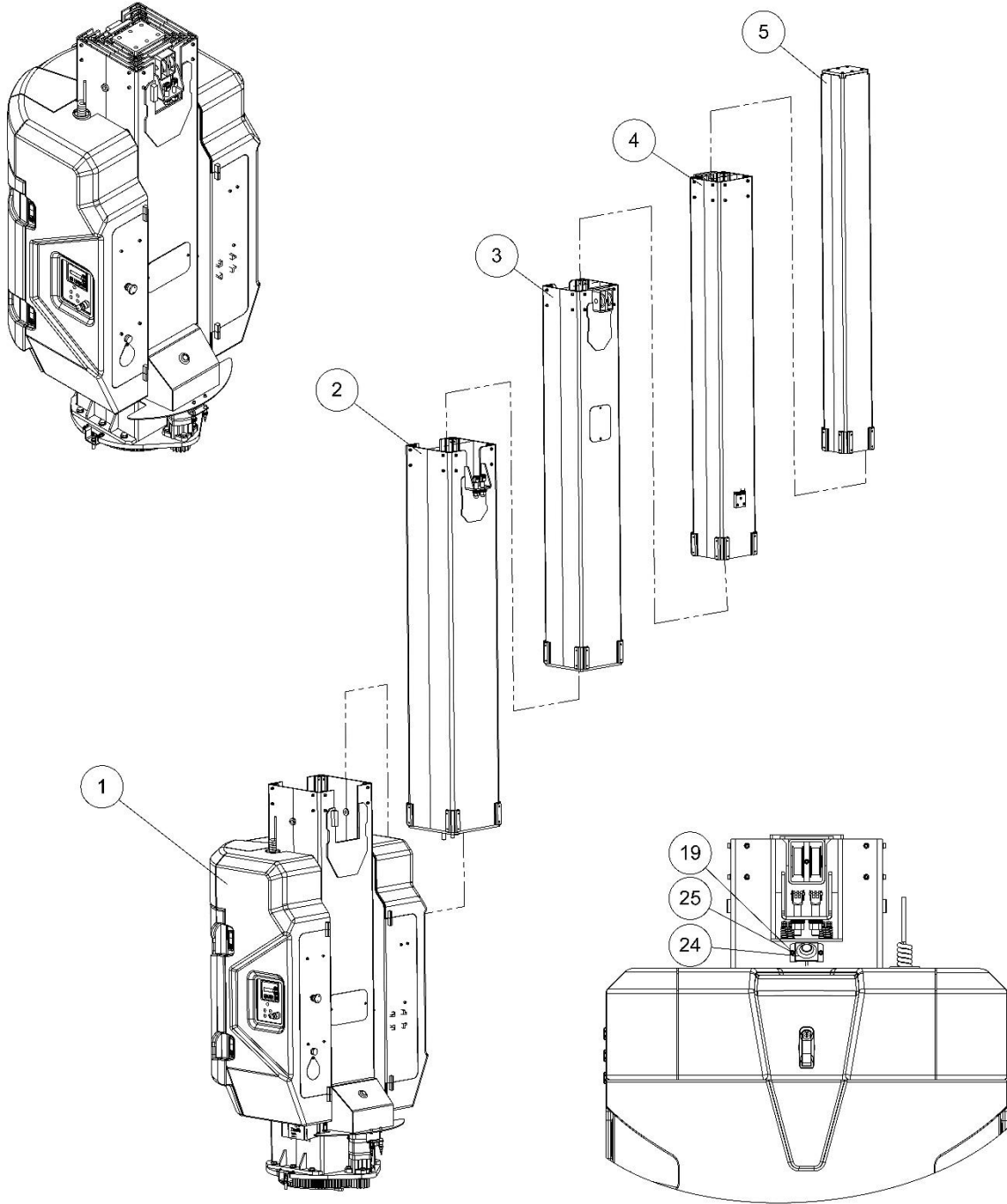




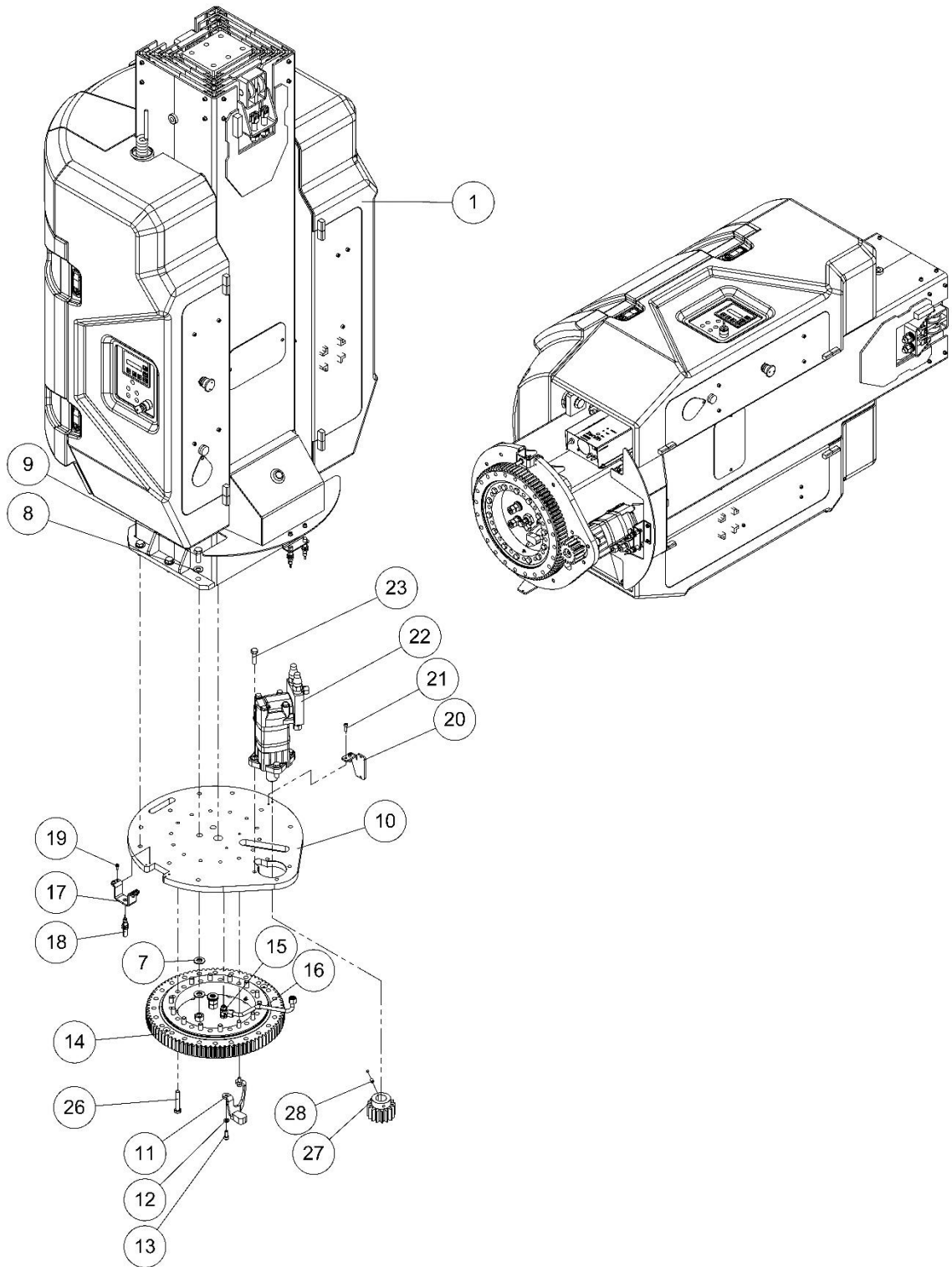
<b>Item</b>	<b>Qty.</b>	<b>Description</b>	<b>Part No.</b>
1	1	Chassis assembly	70010000AA
2	1	Turntable assembly	70020000AA
3	12	M12 Washer DIN 125	S01012000AA
4	12	M12x65 Hex head cap screw DIN 518	S20012017AA
5	6	Jib boom assembly	70030000AA
6	6	M16 Washer DIN 125	S01016000AA
7	4	M16x50 Hex head cap screw DIN 518	S20016014AA
8	4	Static strap	M01510100AA
9	4	M8x25 Hex head cap screw DIN 518	S20008009AA
10	4	M8 Hex nut DIN 934 ISO 4029	S01010000AA

# TURNTABLE

## Turntable Assembly



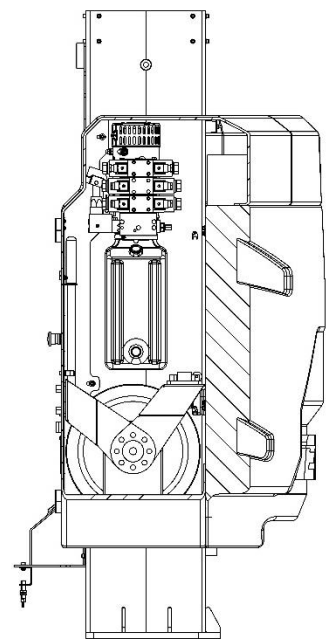
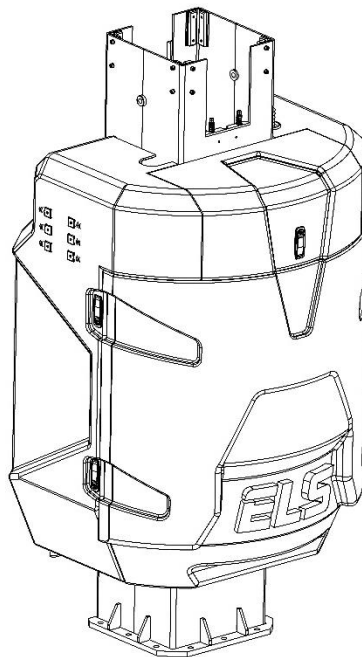
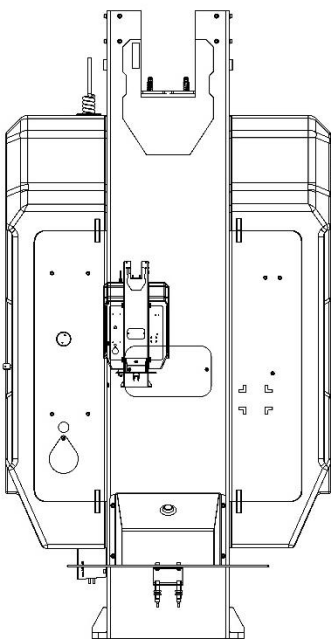
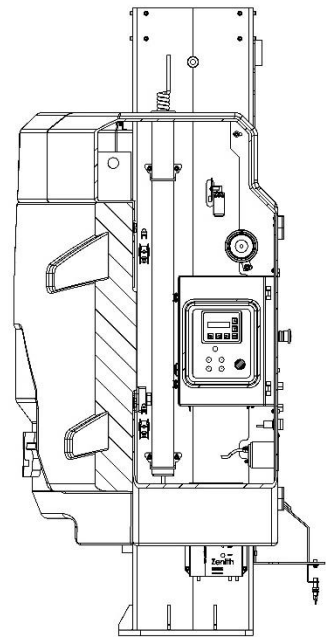
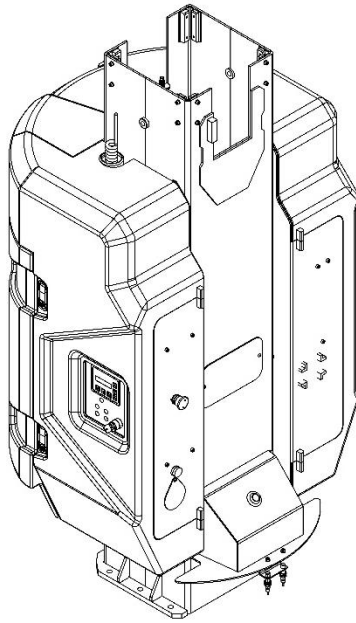
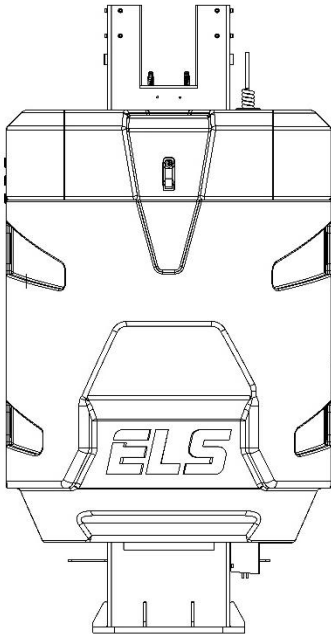
<b>Item</b>	<b>Qty.</b>	<b>Description</b>	<b>Part No.</b>
1	1	Turntable	70021000AA
2	1	4. Mast assembly	70020800AA
3	1	3. Mast assembly	70020500AA
4	1	2. Mast assembly	70020300AA
5	1	1. Mast assembly	70020100AA
19	6	M5x12 Socket head cap screw DIN 912	S21005004AA
24	1	Flasher linkage bracket	70022900AA
25	2	M5 Washer DIN 125	S01005000AA

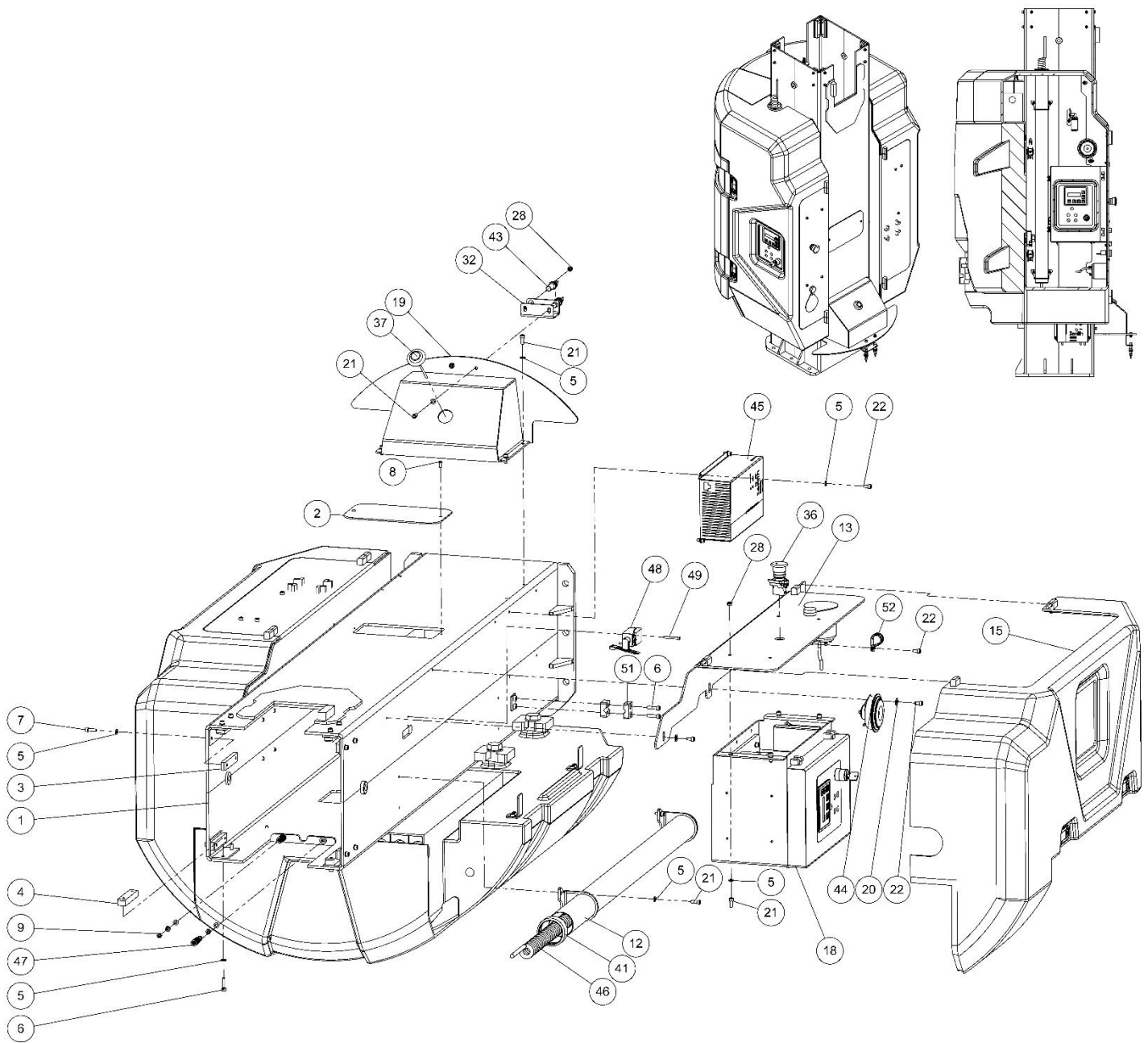


Item	Qty.	Description	Part No.
1	1	Turntable	70021000AA
7	8	M16 Disc spring DIN 2093	S33016054AA
8	9	M14 Washer DIN 125	S01014000AA
9	9	M14x35 Hexagon head screw with shank DIN 931	S20014011AA
10	1	5. Mast linkage plate	70020001AA
11	1	Turntable stoper	70022400AA
12	2	M8 Washer DIN 125	S01008000AA
13	2	M8x20 Socket head cap screw DIN 912	S21008008AA
14	1	Gearbox	M00100001AA
15	1	Hydraulic elbow fitting	H10342006AA
16	1	Mast cylinder nipple	H01800004AA
17	1	Turntable rotation proximity switch bracket	70020002AA
18	1	Turntable rotation proximity switch	E00810002AA
19	6	M5x12 Socket head cap screw DIN 912	S21005004AA
20	1	Flexible wireway fixing part	70020003AA
21	2	M6x20 Socket head cap screw DIN 912	S21006008AA
22	1	Turntable rotation motor	H00200003AA
23	4	M12x40 Hex head cap screw DIN 518	S20012012AA
26	14	M12x65 Hex head cap screw DIN 518	S20012017AA
27	1	Pinion gear	M00100002AA
28	1	M8x12 Hexagon socket set screws with cup point DIN 916	S18008004AA



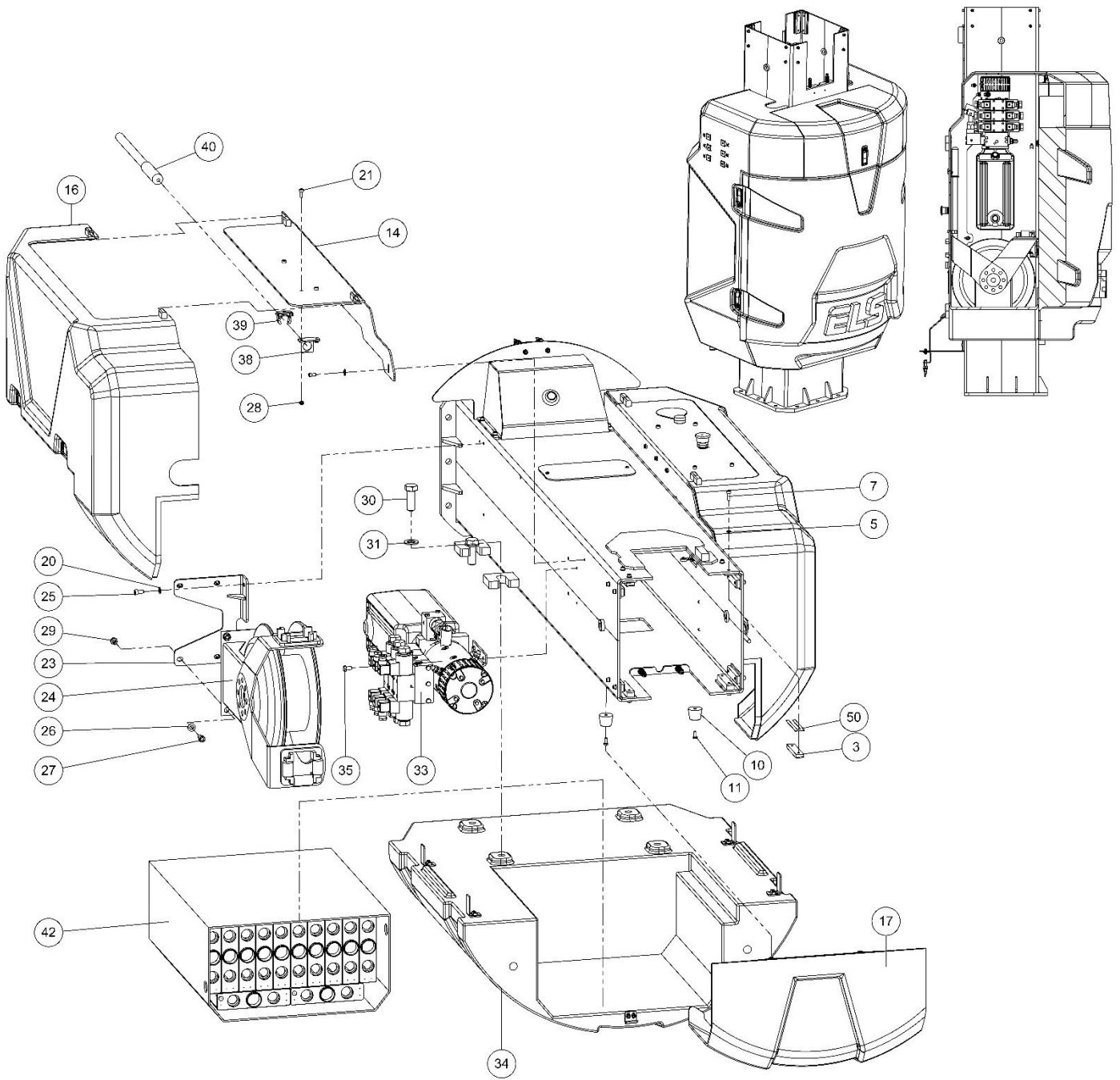
### 5. Mast Assembly





Item	Qty.	Description	Part No.
1	1	5. Mast weldment assembly	70021100AA
2	1	5. Mast maintenance cover	70021001AA
3	6	Slide block	70020101AA
4	2	Slide block	70020102AA
5	39	M6 Washer DIN 125	S01006000AA
6	6	M6x25 Socket head cap screw DIN 912	S21006009AA
7	12	M6x20 Socket head cap screw DIN 912	S21006008AA
8	2	M5x12 Hexagon socket button head screw ISO 7380	S26005004AA
9	4	M6 Hex nut DIN 934 ISO 4029	S04006000AA
12	1	Conduit	70021300AA
13	1	Mast linkage bracket left side	70021400AA
15	1	Turntable cover	70021600AA
18	1	Ground control box	70022100AA
19	1	Chassis front cover	70022000AA
20	9	M8 Washer DIN 125	S01008000AA
21	20	M6x16 Socket head cap screw DIN 912	S21006006AA
22	10	M6x12 Socket head cap screw DIN 912	S21006004AA
28	11	M6 Prevailing torque nut ISO 10511	S07006000AA
32	1	Turntable rotation proximity switch bracket	70021004AA
36	1	Emergency stop button	E01920001AA
37	1	Flasher	E00520003AA
41	1	Conduit ring	70021002AA
43	2	Turntable rotation proximity switch	E00810002AA
44	1	Horn	E01020001AA

45	1	Battery Charger	E00324001AA
46	1	Kerie cable	E01270001AA
47	2	Spring	M00400003AA
48	1	Mast up limit switch	E00820001AA
49	2	M4x35 Socket head cap screw DIN 912	S21004011AA
51	2	Kerie cable clamp	M01600003BA
52	1	Ø20mm Rubber lined P Clip DIN 3016	M02400001AA



Item	Qty.	Description	Part No.
3	6	Slide block	70020101AA
5	39	M6 Washer DIN 125	S01006000AA
7	12	M6x20 Socket head cap screw DIN 912	S21006008AA
10	2	Turntable cover linkage tap	M00900001BA
11	2	M6x15 Hex head cap screw DIN 518	S20006005AA
14	1	Mast linkage bracket left side	70021700AA
16	1	Turntable cover	70021800AA
17	1	Turntable cover	70021900AA
20	9	M8 Washer DIN 125	S01008000AA
21	20	M6x16 Socket head cap screw DIN 912	S21006006AA
23	1	Hydraulic hose reel linkage plate	70021200AA
24	1	Hydraulic hose reel	H02102001AA
25	2	M8x16 Socket head cap screw DIN 912	S21008006AA
26	4	M10 Washer DIN 125	S01010000AA
27	4	M10x20 Socket head cap screw DIN 912	S21010008AA
28	11	M6 Prevailing torque nut ISO 10511	S07006000AA
29	4	M10 Prevailing torque nut ISO 10511	S07010000AA
30	4	M20x55 Hex head cap screw DIN 518	S20020015AA
31	4	M20 Washer DIN 125	S01020000AA
33	1	Hydraulic powerpack	H00600006AA
34	1	Counter weight	70022700AA
35	4	M8x15 Hex head cap screw DIN 518	S20008005AA
38	1	Bracket, cable transport	19993003AA
39	1	Clamp	M01600001AA

40	1	Hand pump part	H00600006AA
42	1	Battery 24V 250AH	E00224001AA
50	2	Shim	70020104AA

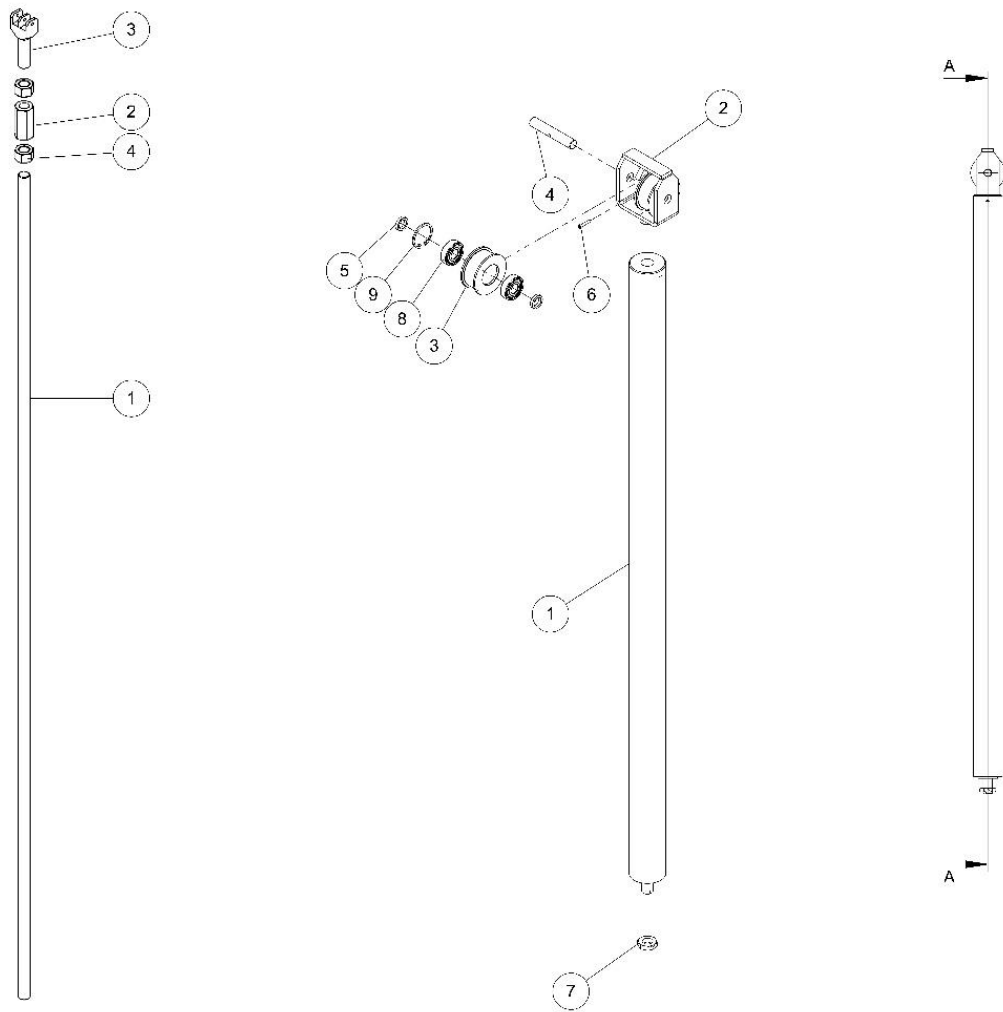




Item	Qty.	Description	Part No.
1	1	4. Mast Weldment assembly	70020900AA
2	12	Slide block	70020101AA
3	4	Slide block	70020102AA
4	2	Wire rope reel fixing part	70020305AA
5	2	Wire rope reel	70020306AA
6	2	Wire roop ball bearing	S40000618AA
7	1	4. Mast maintenance cover	70020801AA
8	1	4. Mast bottom cover	70020802AA
9	2	Tension rod linkage part	70020503AA
10	34	M6 Washer DIN 125	S01006000AA
11	24	M6x20 Socket head cap screw DIN 912	S21006008AA
12	8	M6x25 Socket head cap screw DIN 912	S21006009AA
13	4	M6x12 Hexagon socket button head screw ISO 7380	S26006004AA
14	4	M6x12 Socket head cap screw DIN 912	S21006004AA
15	2	M5x12 Hexagon socket button head screw ISO 7380	S26005004AA
16	12	M16 Disc spring DIN 2093	S33016054AA
17	2	M16 Hex nut DIN 934 ISO 4029	S04016000AA
18	2	Wire rope reel pin	70020301AA
19	2	Chain linkage pin	70020504AA
20	4	M6 Hex nut DIN 934 ISO 4029	S04006000AA
21	8	Split pin DIN 94	S16005006AA
23	2	Chain tension rod assembly	70022800AA
24	2	Chain linkage pin	70020505AA
25	2	Chain assembly	M02000001AA

26	2	M8 Washer DIN 125	S01008000AA
28	4	Shim	70020104AA

### Chain Tension Ros Assembly and Mast Cylinder Linkage Aassembly



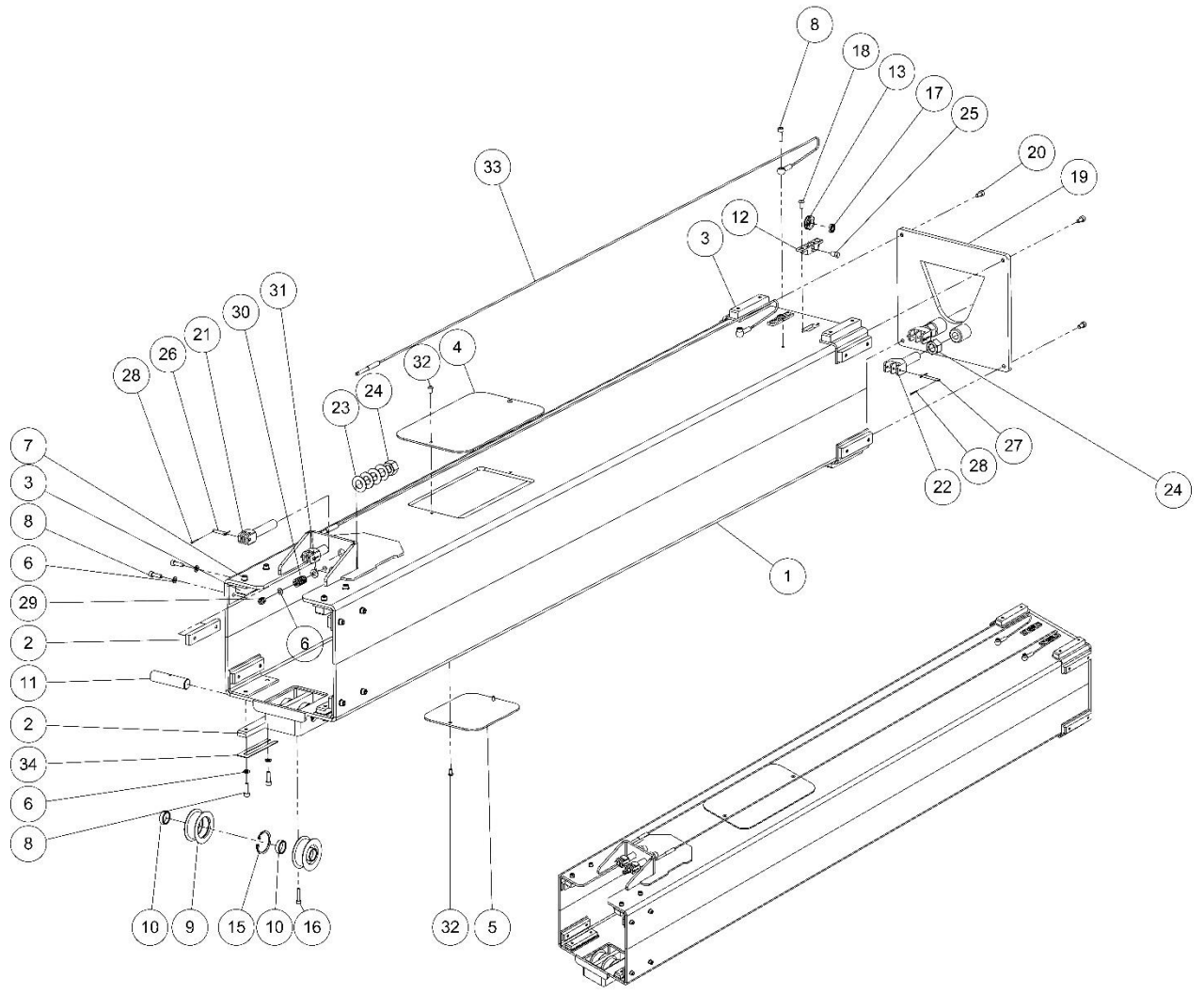
**Chain Tension Rod Assembly List**

<b>Item</b>	<b>Qty.</b>	<b>Description</b>	<b>Part No.</b>
1	1	Tension rod	70022801AA
2	1	M16 Nut	70022803AA
3	1	Tension rod linkage part	70022802AA
4	2	M16 Hex nut DIN 934 ISO 4029	S04016000AA

**Mast Cylinder Linkage Assembly List**

<b>Item</b>	<b>Qty.</b>	<b>Description</b>	<b>Part No.</b>
1	1	Mast Cylinder	H00570001AA
2	1	Mast cylinder linkage part	70022600AA
3	1	Chain reel	70022501AA
4	1	Chain reel pin	70022502AA
5	4	Bearing support part	70022503AA
6	1	M5x25 Socket head cap screw DIN 912	S21005009AA
7	1	Mast cylinder linkage nut	70022504AA
8	4	Ball bearing	S40006304AA
9	2	Ø52 Circlip DIN 472	S11093000AA

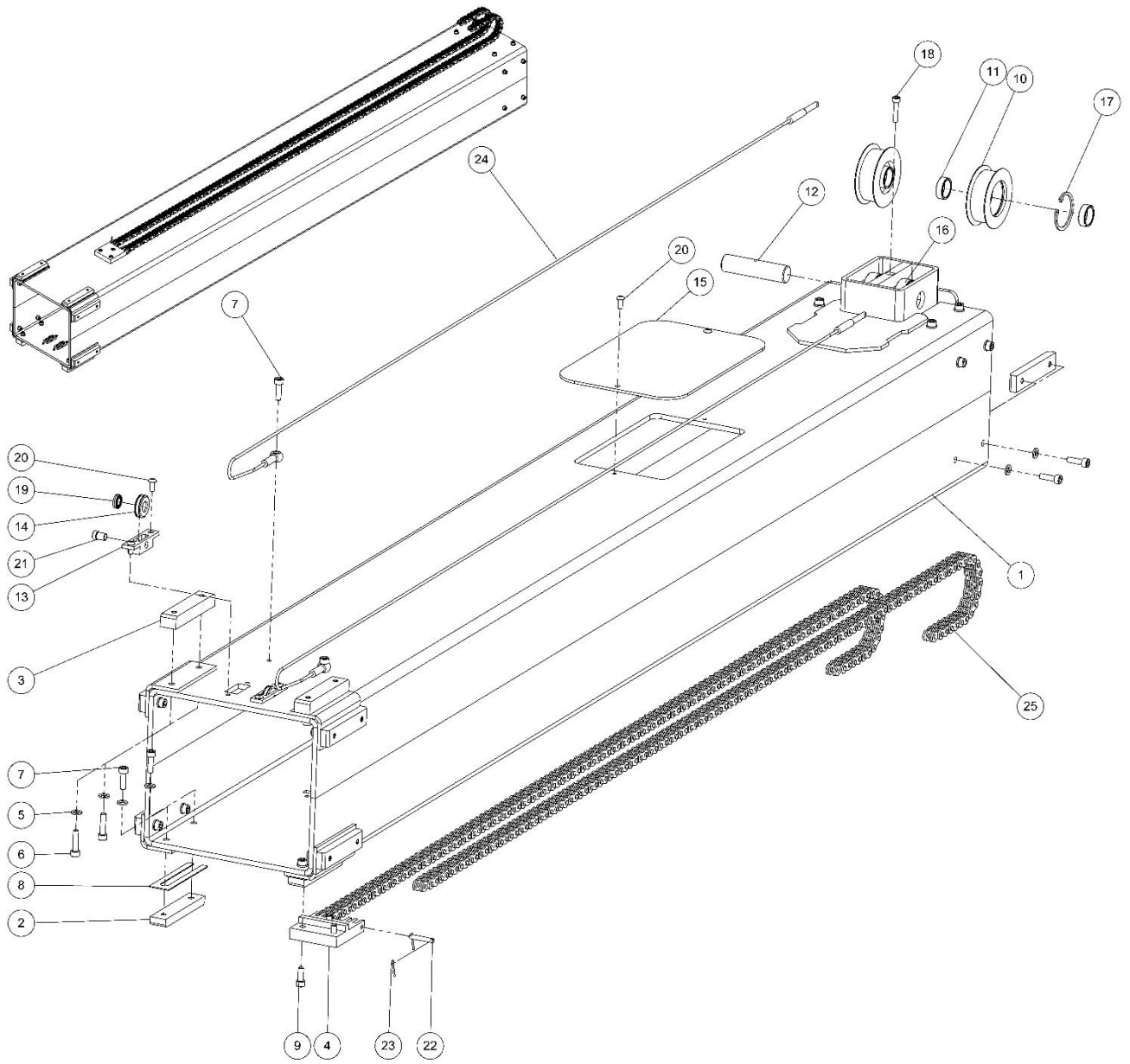
### 3. Mast Assembly



Item	Qty.	Description	Part No.
1	1	3. Mast Weldment assembly	70020600AA
2	12	Slide block	70020101AA
3	4	Slide block	70020102AA
4	1	3. Mast front maintenance cover	70020501AA
5	1	3. Mast back maintenance cover	70020502AA
6	34	M6 Washer DIN 125	S01006000AA
7	8	M6x25 Socket head cap screw DIN 912	S21006009AA
8	26	M6x20 Socket head cap screw DIN 912	S21006008AA
9	2	Chain reel	70020506AA
10	4	Bearing support part	70020303AA
11	1	Chain reel pin	70020304AA
12	2	Wire rope reel fixing part	70020305AA
13	2	Wire rope reel	70020306AA
15	2	Ø42 Circlip DIN 472	S11066000AA
16	1	M5x25 Socket head cap screw DIN 912	S21005009AA
17	2	Ball bearing	S40000618AA
18	4	M6x12 Hexagon socket button head screw ISO 7380	S26006004AA
19	1	3. Mast bottom cover	70020700AA
20	4	M6x12 Socket head cap screw DIN 912	S21006004AA
21	2	Tension rod linkage part	70020503AA
22	2	Tension rod linkage part	70022802AA
23	8	M16 Disc spring DIN 2093	S33016054AA
24	4	M16 Hex nut DIN 934 ISO 4029	S04016000AA
25	2	Wire rope reel pin	70020301AA

26	2	Chain linkage pin	70020504AA
27	2	Chain linkage pin	70020505AA
28	8	Split pin DIN 94	S16005006AA
29	4	M6 Hex nut DIN 934 ISO 4029	S04006000AA
30	2	Spring	M00400003AA
31	2	M8 Washer DIN 125	S01008000AA
32	4	M5x10 Hexagon socket button head screw ISO 7380	S26005003AA
33	2	Wire rope assembly	M02100002AA
34	4	Shim	70020104AA

### 2. Mast Assembly

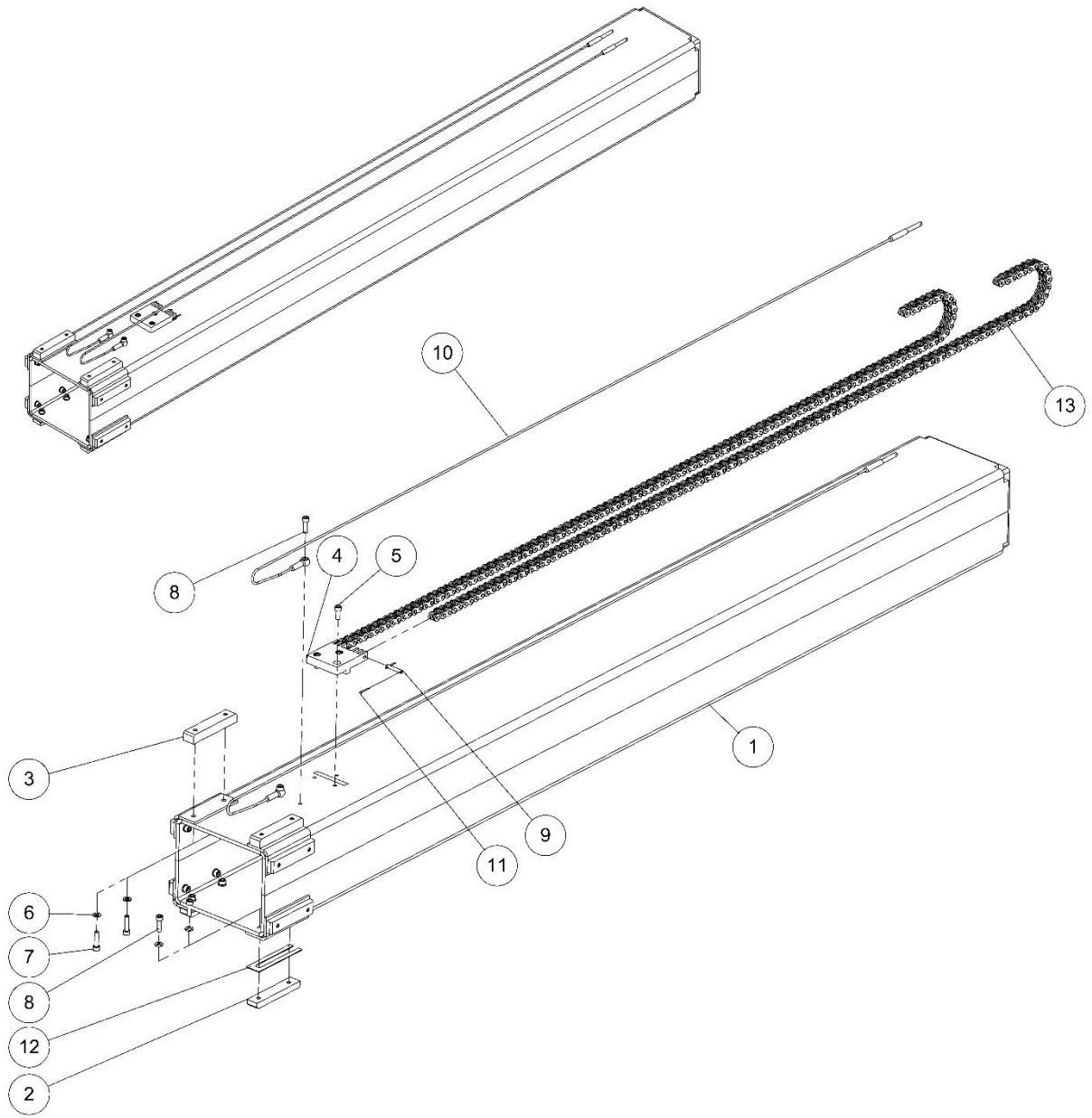




Item	Qty.	Description	Part No.
1	1	2. Mast Weldment assembly	70020400AA
2	12	Slide block	70020101AA
3	4	Slide block	70020102AA
4	1	Chain fixing part	70020103AA
5	32	M6 Washer DIN 125	S01006000AA
6	8	M6x25 Socket head cap screw DIN 912	S21006009AA
7	26	M6x20 Socket head cap screw DIN 912	S21006008AA
8	4	Shim	70020104AA
9	3	M6x16 Socket head cap screw DIN 912	S21006006AA
10	2	Chain reel	70020302AA
11	4	Wire rope reel part	70020303AA
12	1	Chain reel pin	70020304AA
13	2	Wire rope reel fixing part	70020305AA
14	2	Wire rope reel	70020306AA
15	1	3. Mast maintenance cover	70020307AA
16	2	Ball bearing	S40006004AA
17	2	Ø42 Circlip DIN 472	S11066000AA
18	1	M5x25 Socket head cap screw DIN 912	S21005009AA
19	2	Ball bearing	S40000618AA
20	6	M5x12 Hexagon socket button head screw ISO 7380	S26005004AA
21	2	Wire rope reel pin	70020301AA
22	2	Chain reel pin	70020504AA
23	4	Split pin DIN 94	S16005006AA
24	2	Wire rope assembly	M02100001AA

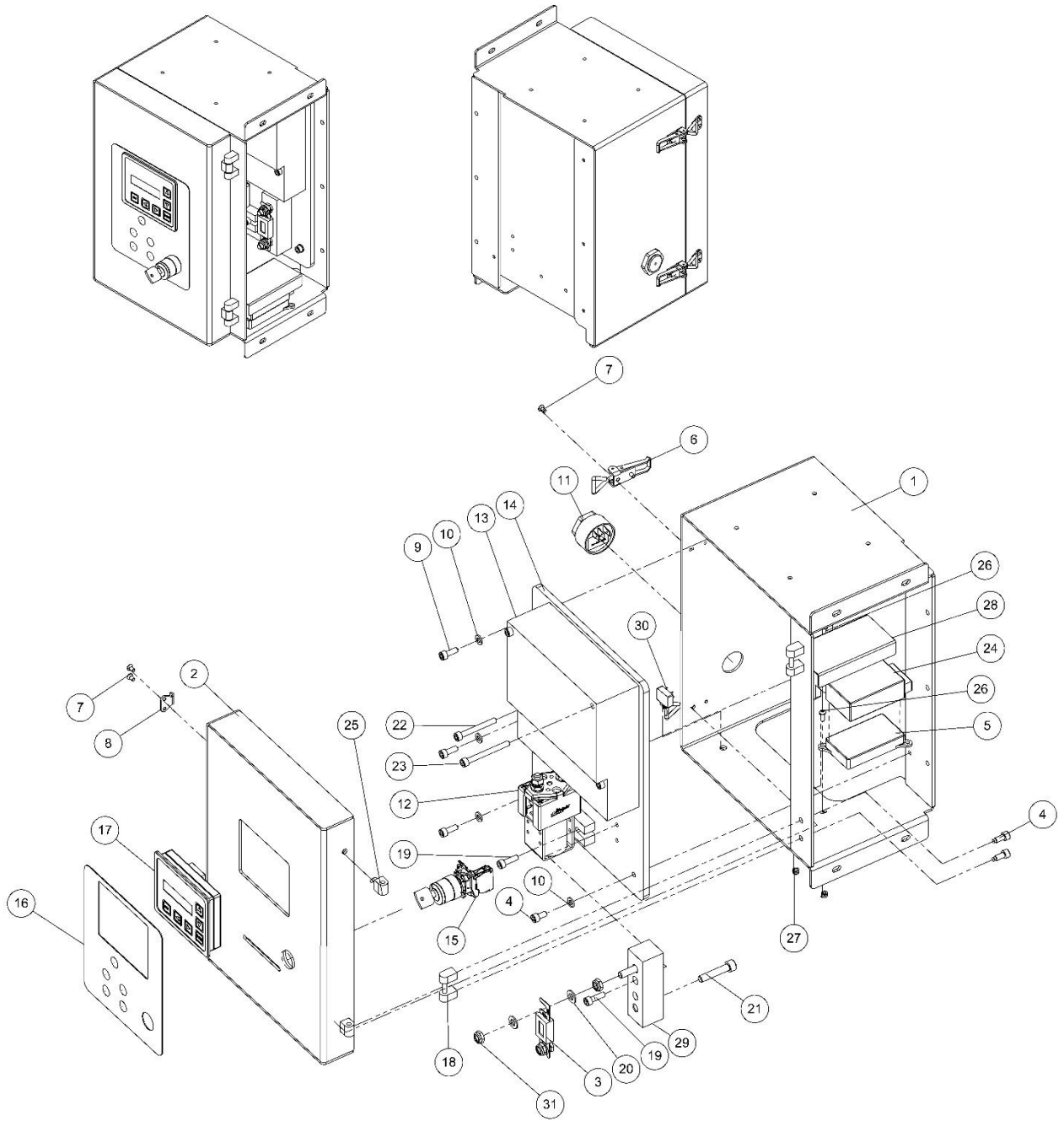
25	2	Chain assembly	M02000003AA
----	---	----------------	-------------

### 1. Mast Assembly



<b>Item</b>	<b>Qty.</b>	<b>Description</b>	<b>Part No.</b>
1	1	1. Mast Weldment assembly	70020200AA
2	6	Slide block	70020101AA
3	2	Slide block	70020102AA
4	1	Chain fixing part	70020103AA
5	3	M6x16 Socket head cap screw DIN 912	S21006006AA
6	16	M6 Washer DIN 125	S01006000AA
7	4	M6x25 Socket head cap screw DIN 912	S21006009AA
8	14	M6x20 Socket head cap screw DIN 912	S21006008AA
9	2	Chain reel pin	70020504AA
10	2	Wire rope assembly	M02100003AA
11	4	Split pin DIN 94	S16005006AA
12	2	Shim	70020104AA
13	2	Chain assembly	M02000002AA

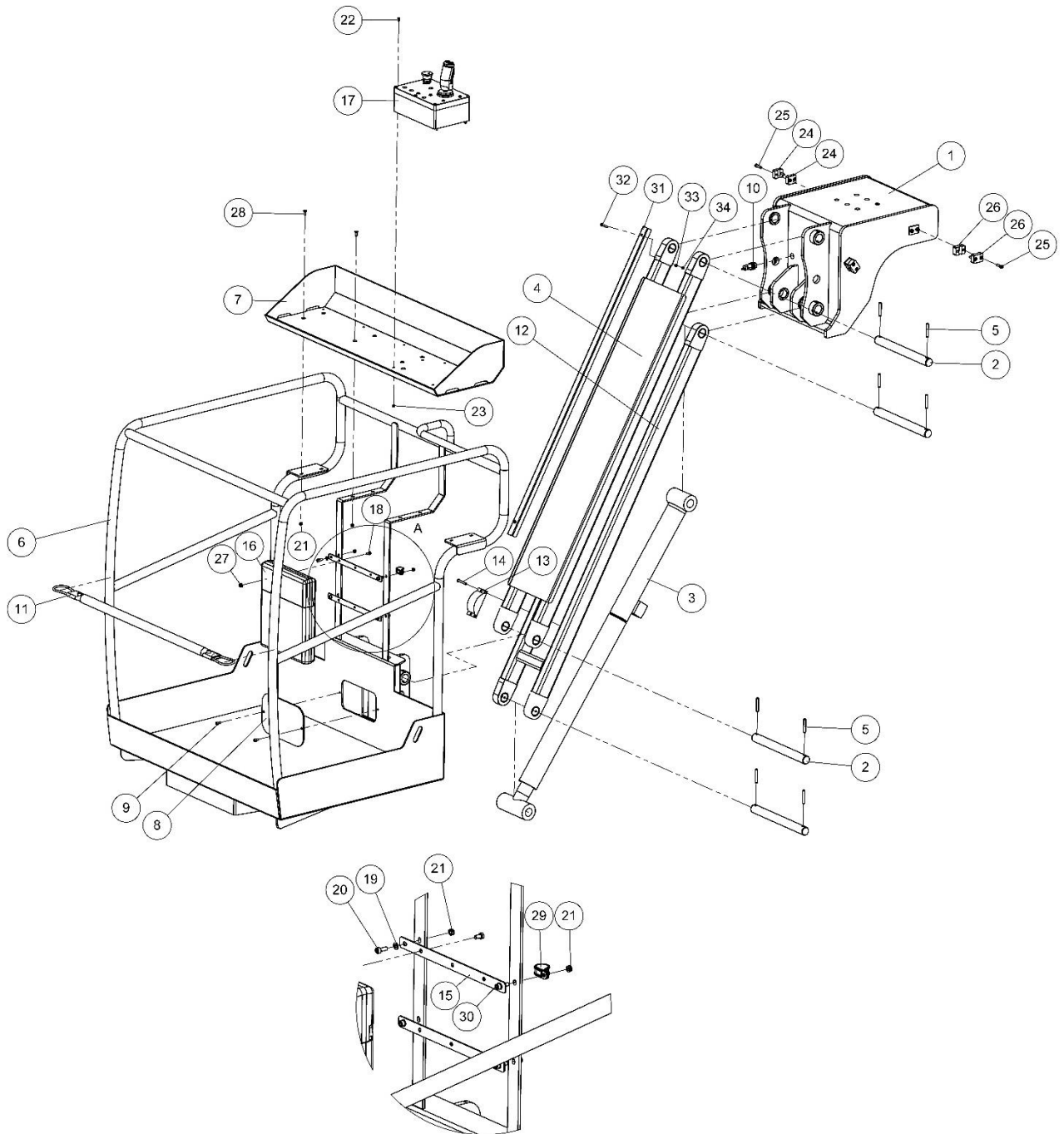
### GCU Assembly



Item	Qty.	Description	Part No.
1	1	Ground control box weldment assembly	70022300AA
2	1	Ground control box cover weldment assembly	70022200AA
3	1	Fuse 300A	E01100004AA
4	5	M6x12 Socket head cap screw DIN 912	S21006004AA
5	1	Flasher control module	E00520004AA
6	2	Ground control box lock	M01000006AA
7	8	M4x8 Hexagon socket countersunk head cap screw DIN 7991	S24004002AA
8	2	Ground control box lock pin	M01000006BA
9	3	M6x16 Socket head cap screw DIN 912	S21006006AA
10	4	M6 Washer DIN 125	S01006000AA
11	1	Buzzer	E01600002AA
12	1	Contactactor	E01500003AA
13	1	Electronic control unit	E04110003AA
14	1	Electronic control unit fixing plate	70022101AA
15	1	Key switch	E01800001AA
16	1	Ground control membrane button card	E04700001AA
17	1	Diagnostic center display	E04500001AA
18	2	Ground control box hinge	M01100003BA
19	4	M6x20 Socket head cap screw DIN 912	S21006008AA
20	4	M8 Washer DIN 125	S01008000AA
21	2	M8x40 Socket head cap screw DIN 912	S21008012AA
22	2	M6x50 Socket head cap screw DIN 912	S21006014AA
23	2	M6x60 Socket head cap screw DIN 912	S21006016AA
24	1	24V-12V Voltage regulator	E01400002AA

25	2	Ground control box hinge	M01100003CA
26	2	M4x12 Hexagon socket button head screw ISO 7380	S26004004AA
27	2	M4 Prevailing torque nut ISO 10511	S07004000AA
28	1	24V-12V Voltage regulator protection plate	70022102AA
29	1	Fuse linkage plate	19991013AA
30	1	Toggle switch	E00622001AA
31	4	M8 Prevailing torque nut ISO 10511	S07008000AA

# JIB - BASKET

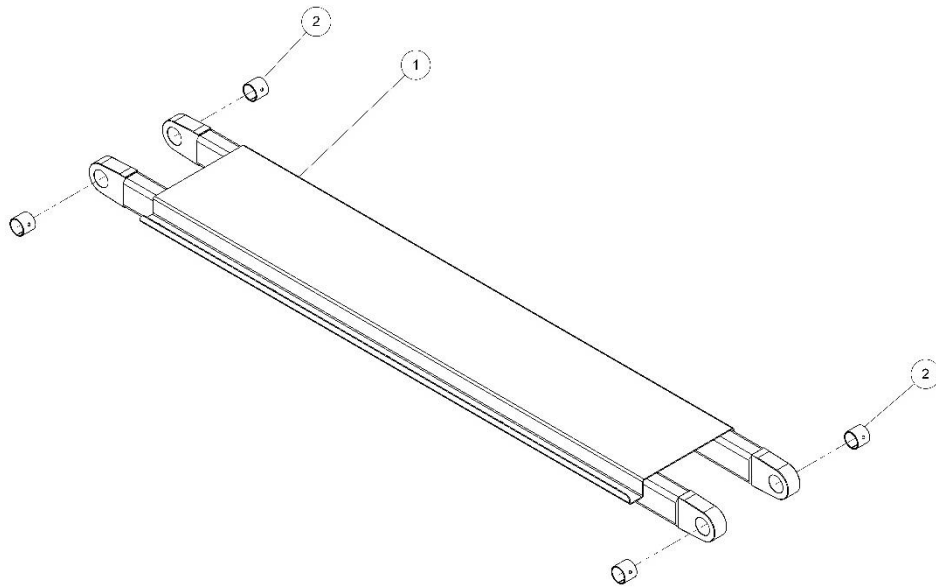




Item	Qty.	Description	Part No.
1	1	Mast head assembly	70030100AA
2	4	Jib linkage pin	70030001AA
3	1	Jib cylinder	H00570002AA
4	1	Jib top arm assembly	70030200AA
5	8	Spring type straight pin ISO 8752	S34018014AA
6	1	Basket assembly	70030700AA
7	1	Basket console assembly	70030800AA
8	1	Basket cover	70030002AA
9	2	M6x12 Socket head cap screw DIN 912	S21006004AA
10	1	Proximity switch	E00810001AA
11	1	Entry gate	70030900AA
12	1	Jib bottom arm assembly	70030500AA
13	1	Angle sensor	E04301002AA
14	2	M6x45 Hexagon socket button head screw ISO 7380	S26006013AA
15	2	Manual box linkage plate	70030004AA
16	1	Manual box	M01300001AA
17	1	Platform control unit	70031000AA
18	4	M6x15 Hex head cap screw DIN 518	S20006004AA
19	4	M6 Washer DIN 125	S01006000AA
20	2	M6x16 Socket head cap screw DIN 912	S21006006AA
21	12	M6 Prevailing torque nut ISO 10511	S07006000AA
22	4	M4x10 Hexagon socket button head screw ISO 7380	S26004003AA
23	4	M4 Prevailing torque nut ISO 10511	S07004000AA
24	4	Clamp bracket	M01600003BA

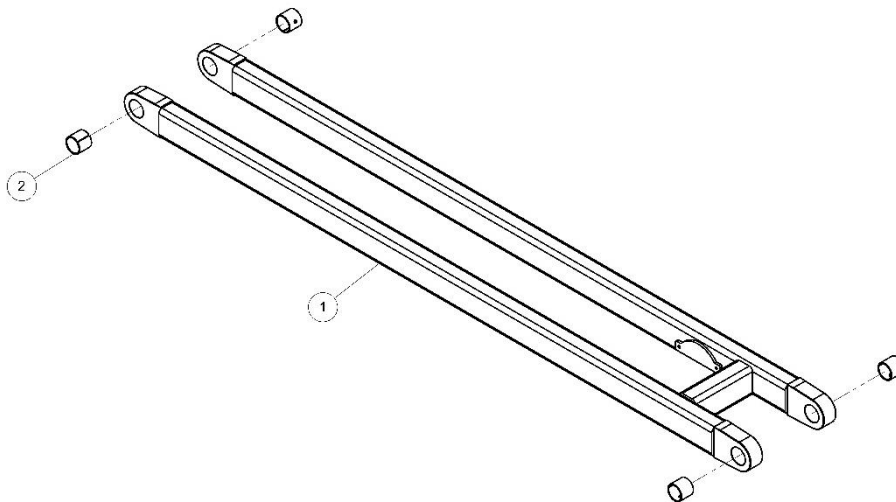
25	8	M6x25 Socket head cap screw DIN 912	S21006009AA
26	4	Clamp bracket	M01600004BA
27	4	M6 Hexagon nut with flange DIN 6923	S38006000AA
28	8	M6x16 Hexagon socket countersunk head cap screw DIN 7991	S24006006AA
29	2	Ø20mm Rubber lined P Clip DIN 3016	M02400001AA
30	2	M6x20 Socket head cap screw DIN 912	S21006008AA
31	1	Cable transport plate	70030003AA
32	2	M5x30 Hexagon socket button head screw ISO 7380	S26005010AA
33	2	M5 Washer DIN 125	S01005000AA
34	2	M5 Prevailing torque nut ISO 10511	S07005000AA

**1. Jib Arm**



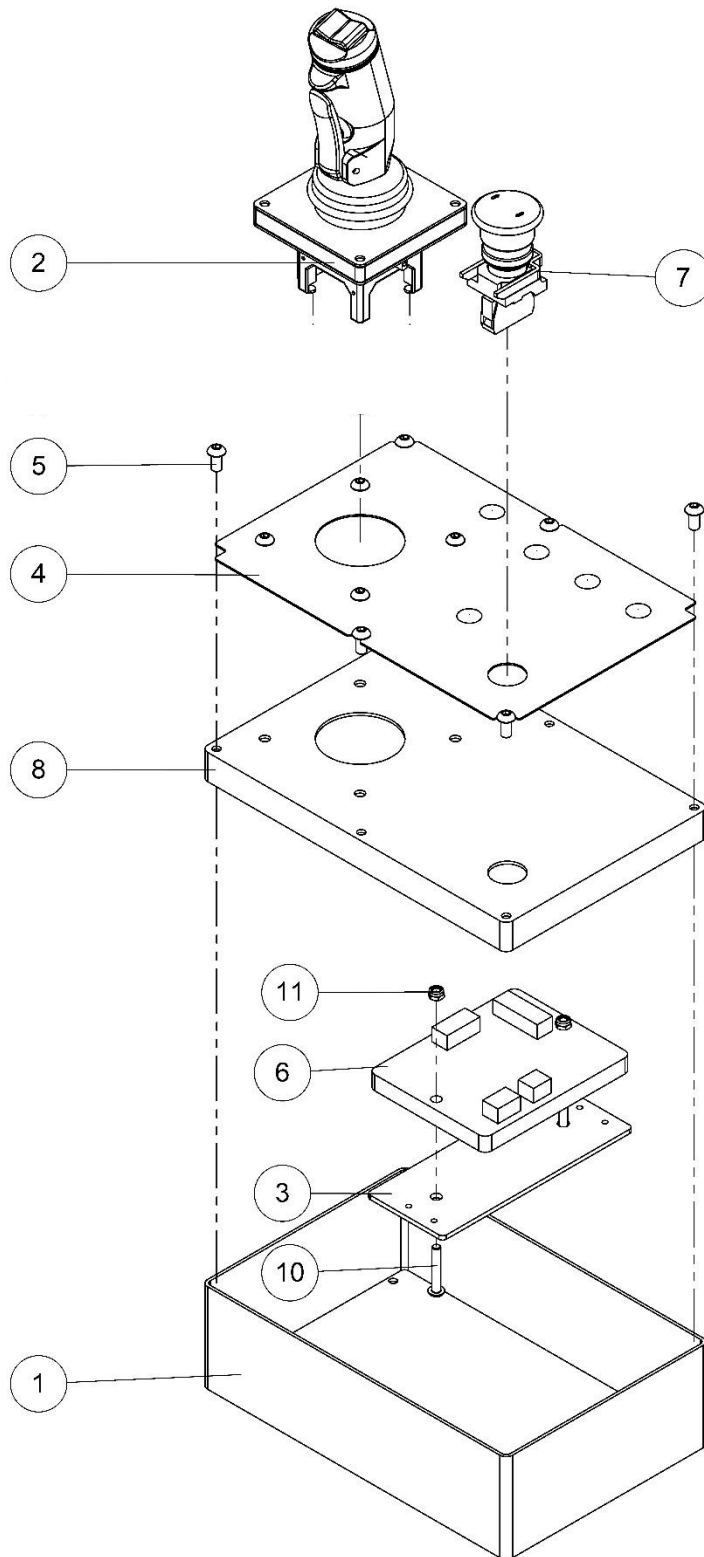
Item	Qty.	Description	Part No.
1	1	Jib top arm assembly	70030300AA
2	4	Ø30x30 P20 Bearing	S31053010BA

**2. Jib Arm**



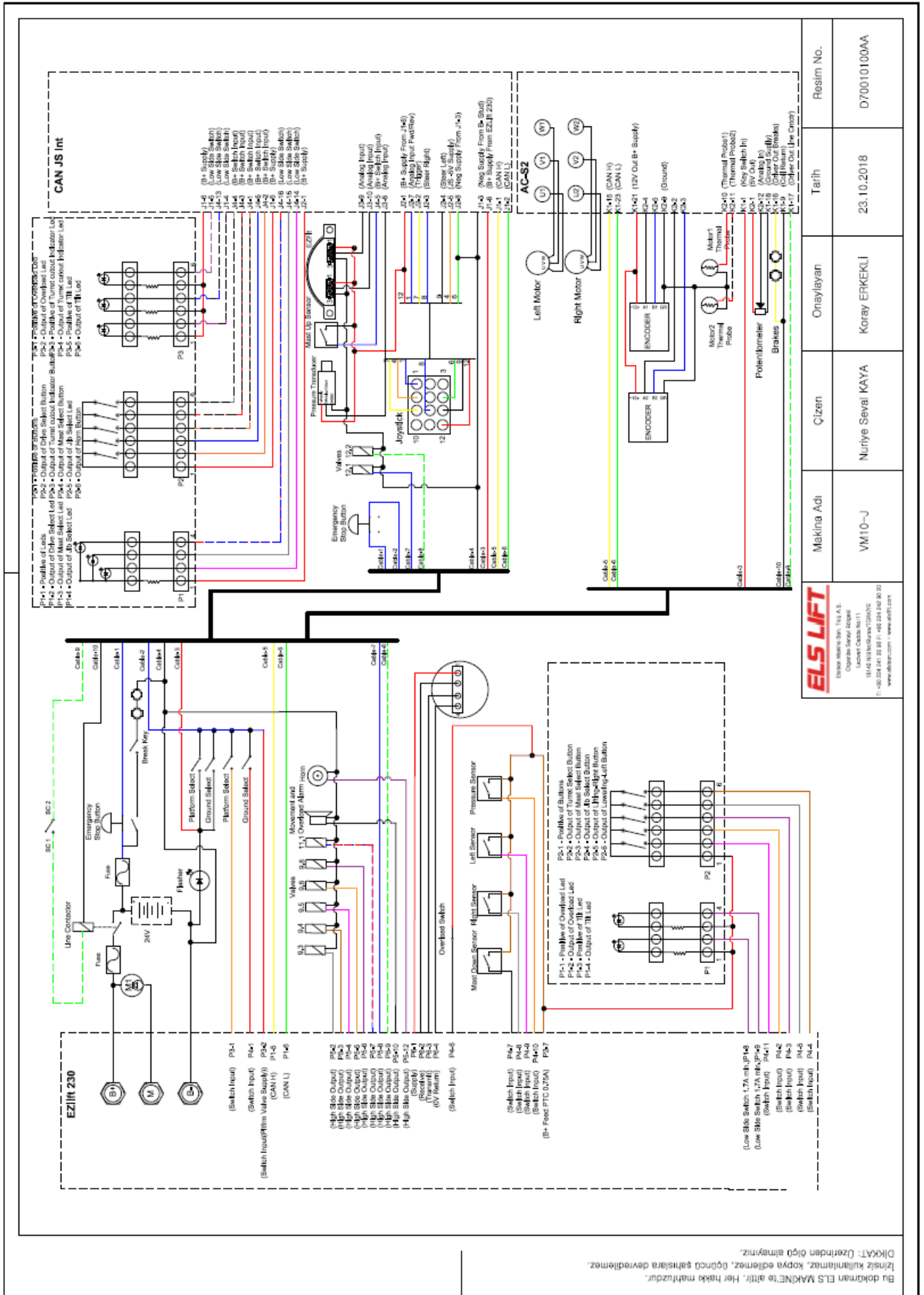
Item	Qty.	Description	Part No.
1	1	Jib bottom arm assembly	70030600AA
2	4	Ø30x30 P20 Bearing	S31053010BA

### PCU Assembly



<b>Item</b>	<b>Qty.</b>	<b>Description</b>	<b>Part No.</b>
1	1	Platform control unit box	E01300002BA
2	1	Joystick	E04200002AA
3	1	Platform control unit fixing plate	70031002AA
4	1	Platform control membrane button card	E04700002AA
5	10	M6x12 Hexagon socket button head screw ISO 7380	S26006004AA
6	1	Platform control unit	E04120001AA
7	1	Emergency stop	E01920001AA
8	1	Platform control unit box cover	E01300002CA
10	2	M5x30 Hexagon socket button head screw ISO 7380	S26005010AA
11	2	M5 Prevailing torque nut ISO 10511	S07005000AA

**ELECTRICAL WIRING DIAGRAM**



**ELS LIFT**

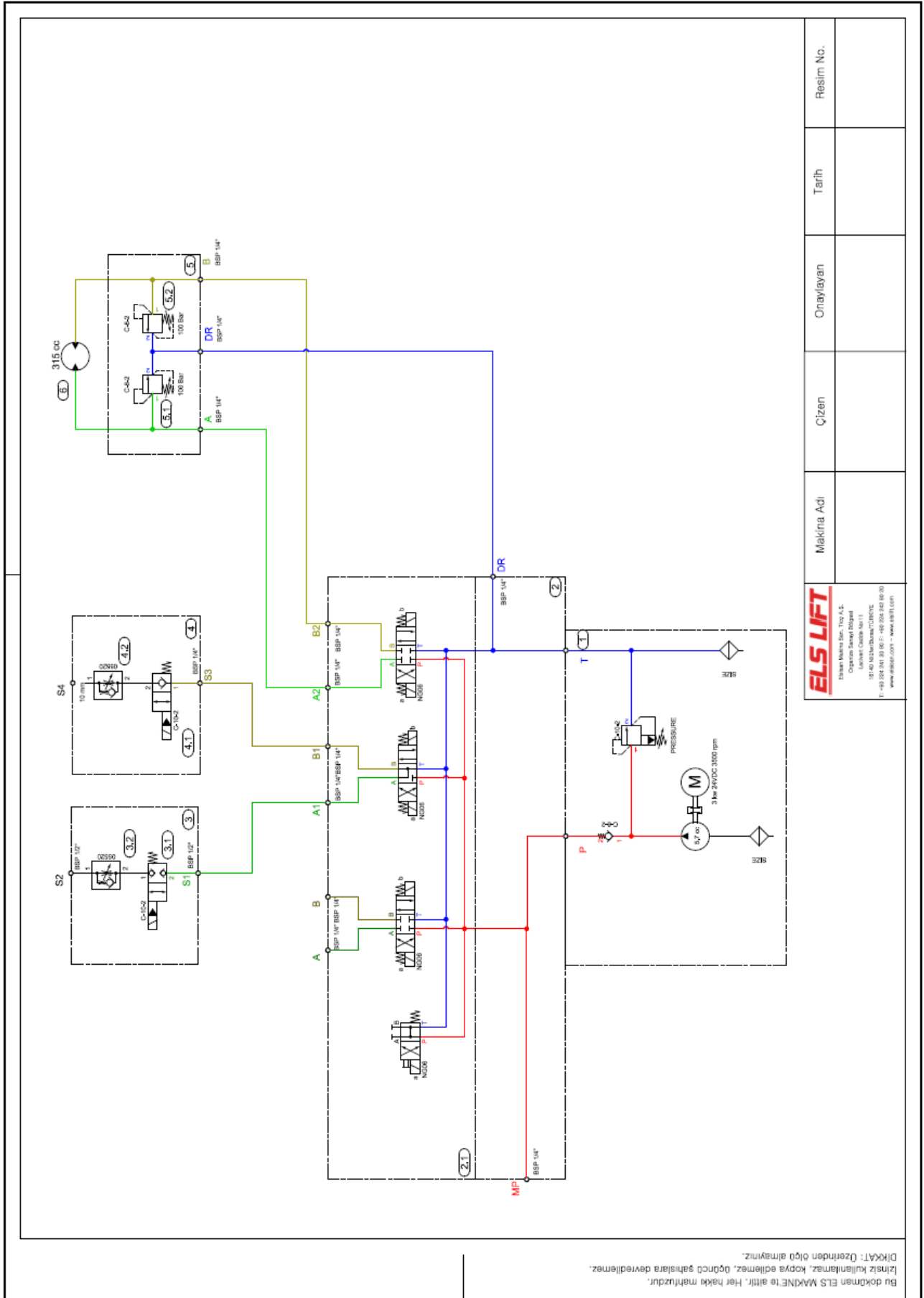
ELSAN MARMARA SAN. TIC. A.Ş.  
 Cumhuriyet Bulvarı  
 Laleli Çarşı No:111  
 16145 NİŞANLIYAKA/İSTANBUL  
 T: +90 212 241 23 28 F: +90 212 241 20 30  
 www.elslift.com - www.elslift.com.tr

Makina Adı	Çizen	Onaylayan	Tarih	Resim No.
VM10-J	Nuriye Seval KAYA	Koray ERKEKLI	23.10.2018	D70010100AA

Bu doküman ELS MAKİNE'ye aittir. Her hakkı mahfuzdur.  
 İzinsiz kullanılamaz, kopya edilemez, ünlüncü şahıslara devredilemez.  
 Dikkat: Üzerinden ölçü alınmaz.

**HYDRAULIC CIRCUIT DIAGRAM**





**ELS LIFT**  
 Elsan Makina San. Tic. A.Ş.  
 Organize Sanayi Bölgesi  
 Lüleburgaz Çarşısı No:11  
 16140 NIKİMLİBAĞI/ÇORLU/TEKİR  
 T: +90 282 601 80 00 F: +90 282 601 80 00  
 www.elslift.com.tr - www.elslift.com

Makina Adı	Çizen	Onaylayan	Tarih	Resim No.